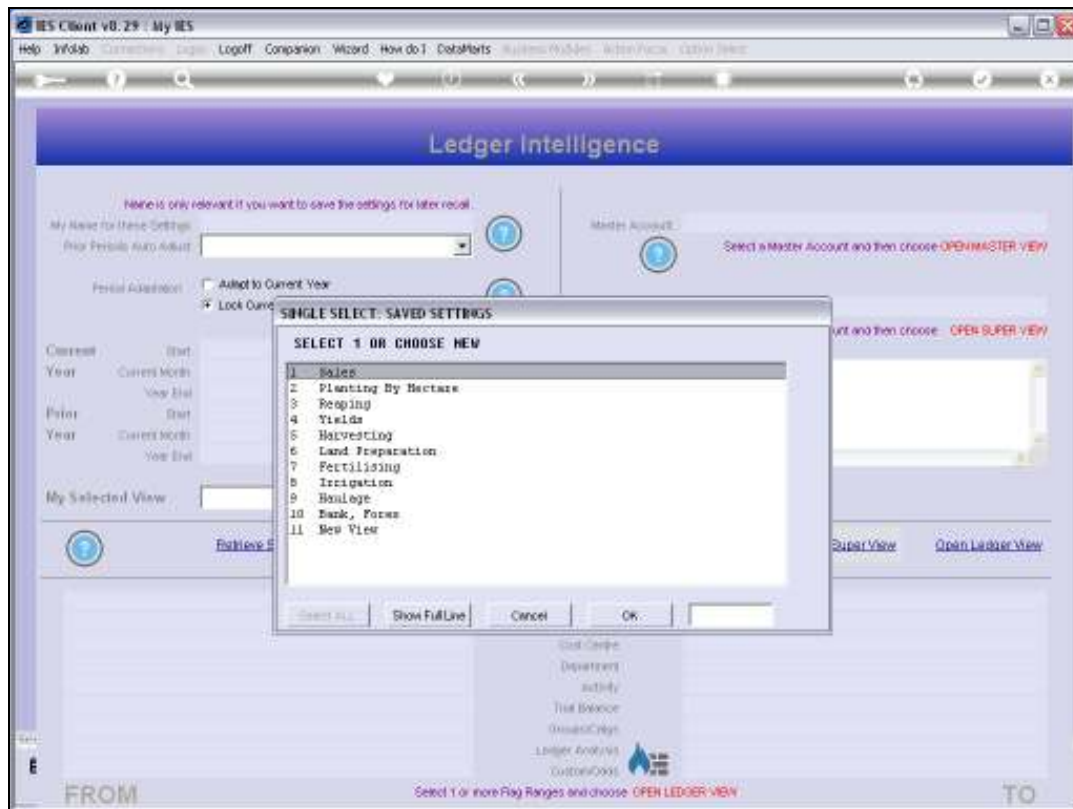




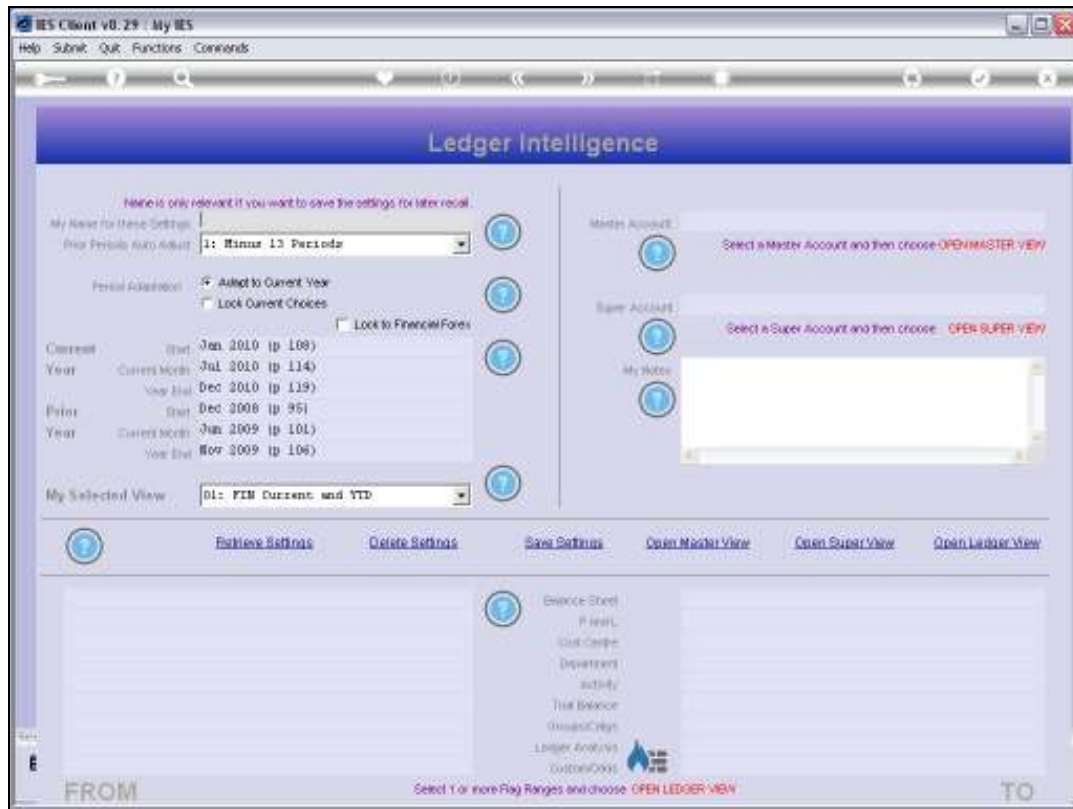
Slide 1

Slide notes: We are using Ledger based Business Intelligence.



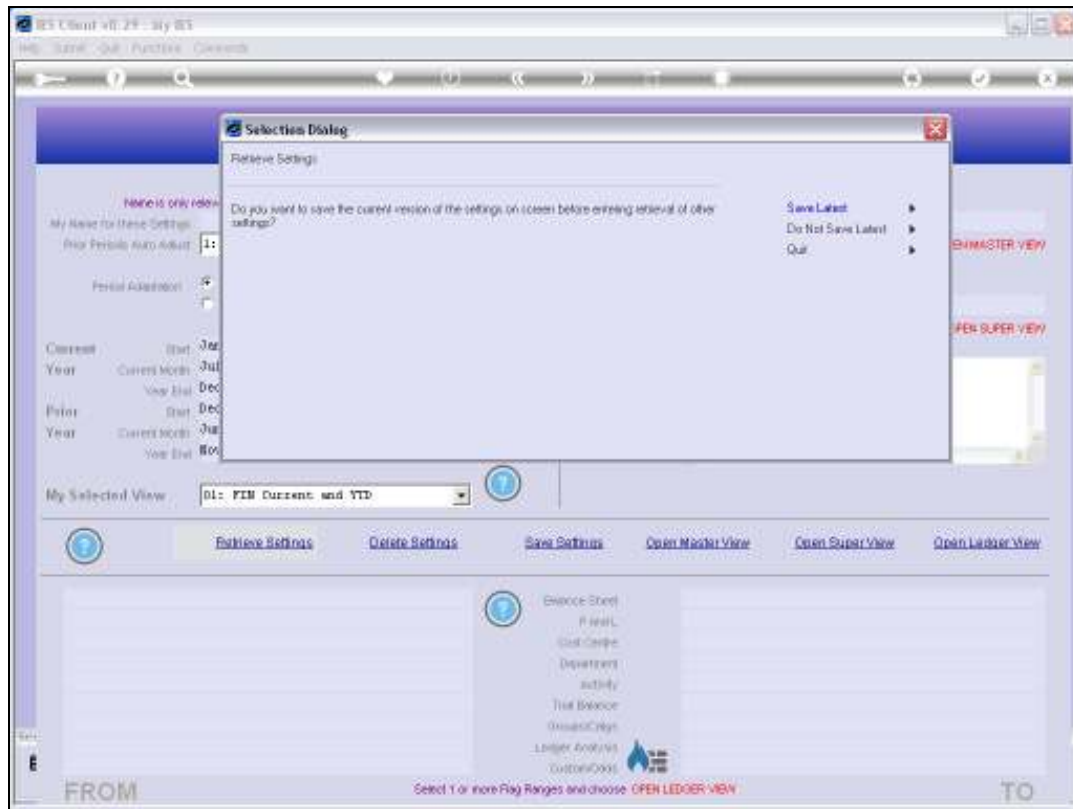
Slide 2

Slide notes: When we enter the Ledger Business Intelligence, the system will offer any prior View Sets that we have saved before, for re-use, or we can choose a 'New View'.



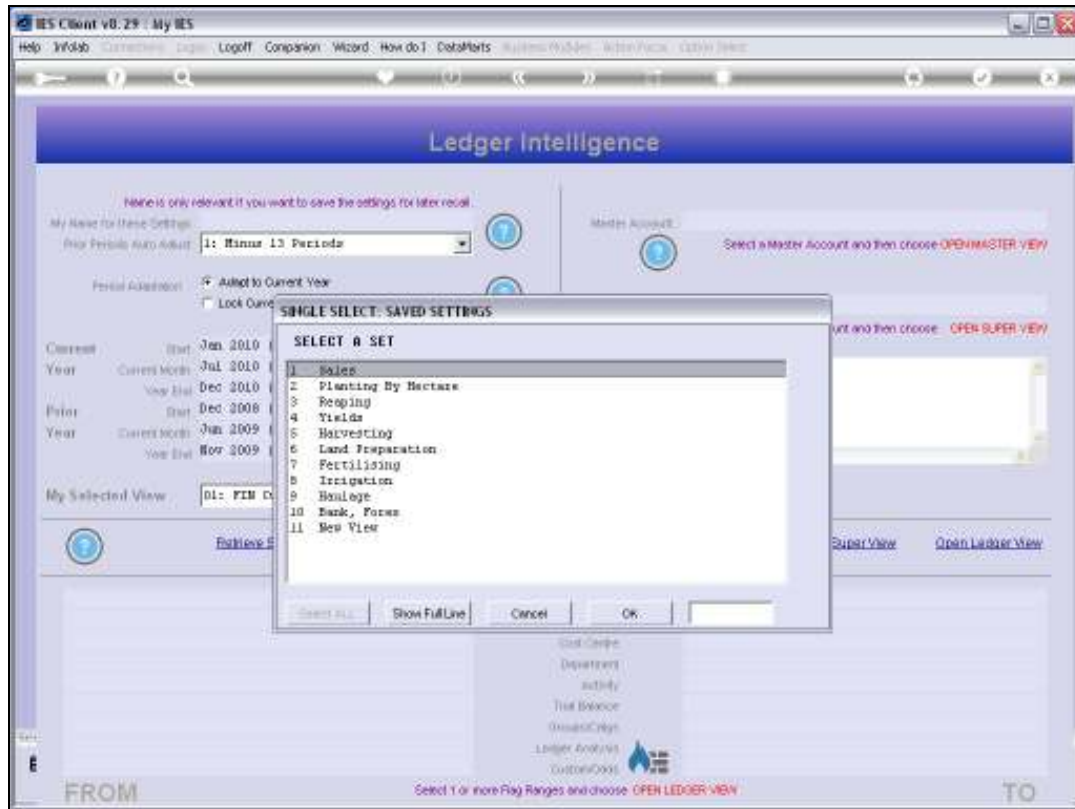
Slide 3

Slide notes: At any stage, whether we are using a New View or a previously established View Set, we can switch between View Sets by choosing 'Retrieve Settings'.



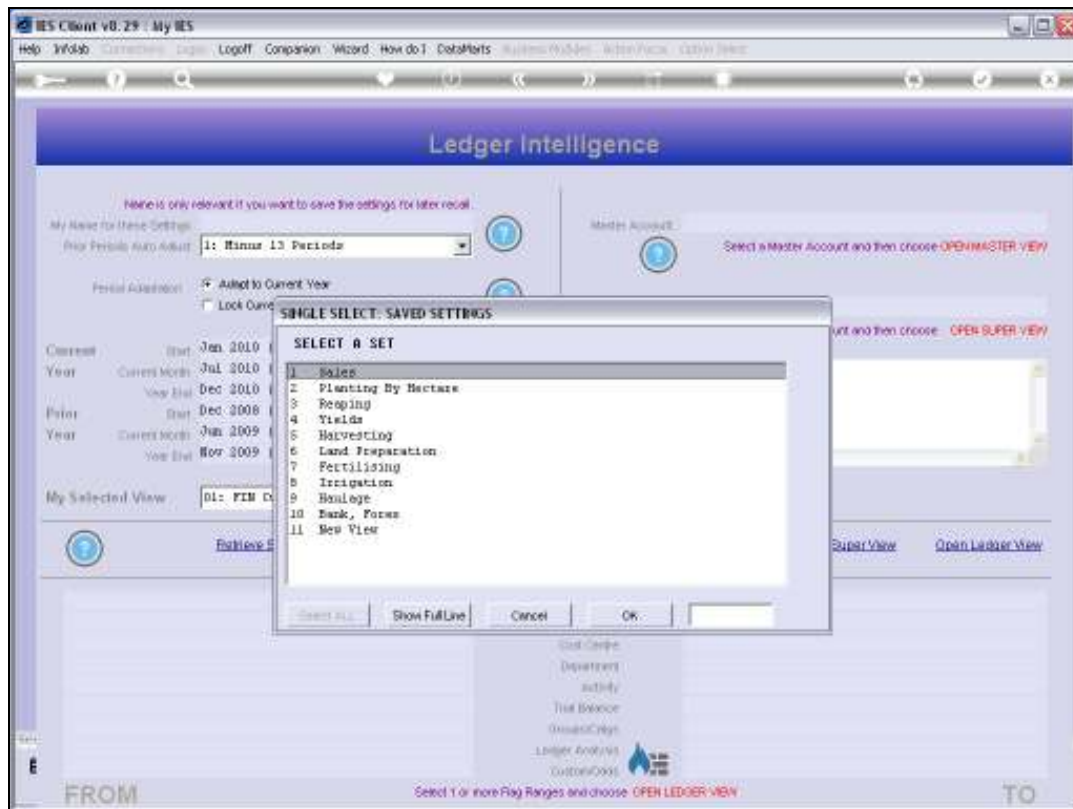
Slide 4

Slide notes: Since we are leaving the Current View Set, an option is offered to save the current Settings. If we have made any changes to the View that we are leaving and want to preserve it, then we will choose to SAVE, else it is not necessary.



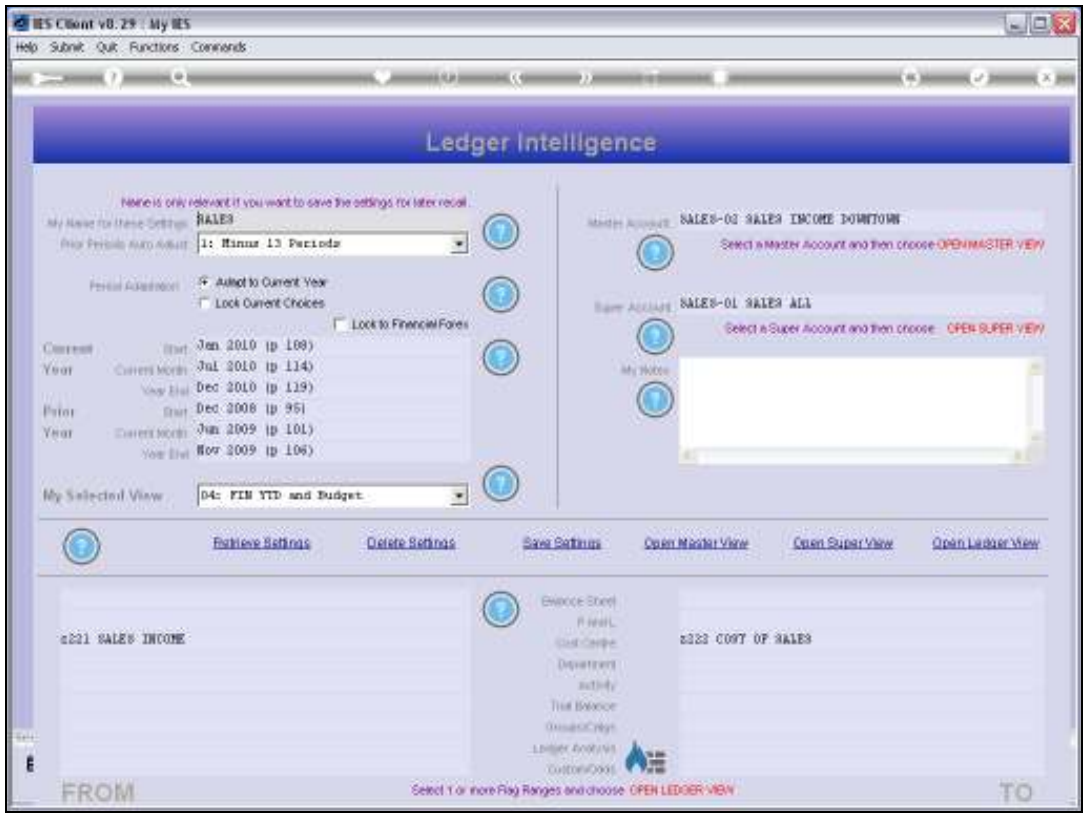
Slide 5

Slide notes: And then we are offered all our existing or available View Sets again, and we can select any View Set to work with. These Views are by User, and the system will only offer our own Views that we have established, plus the option of a New View.

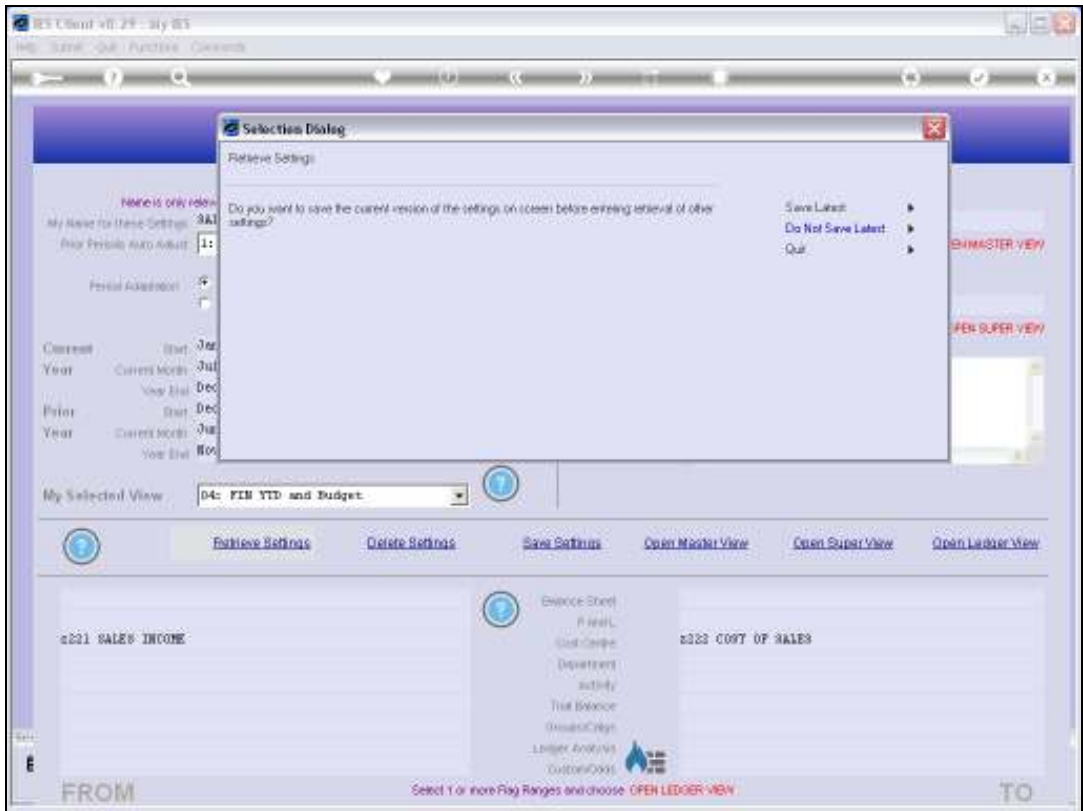


Slide 6

Slide notes:

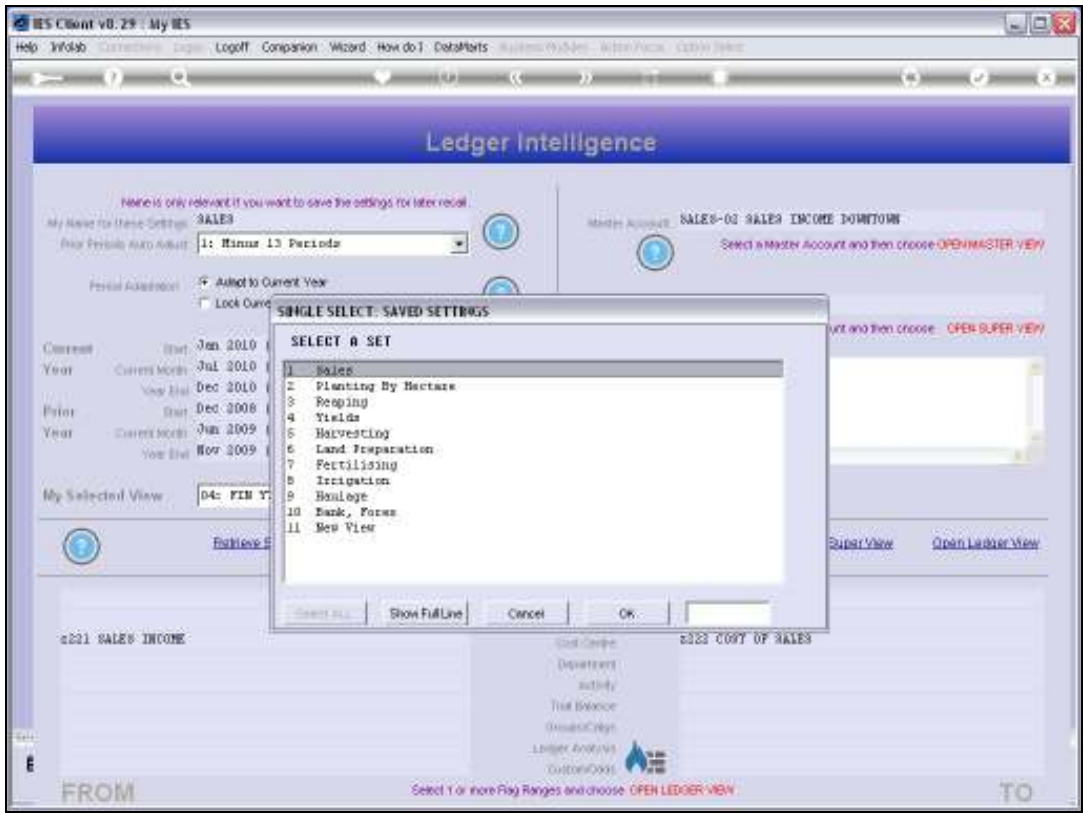


Slide 7
Slide notes: Again, we can switch to another View Set if we want to.

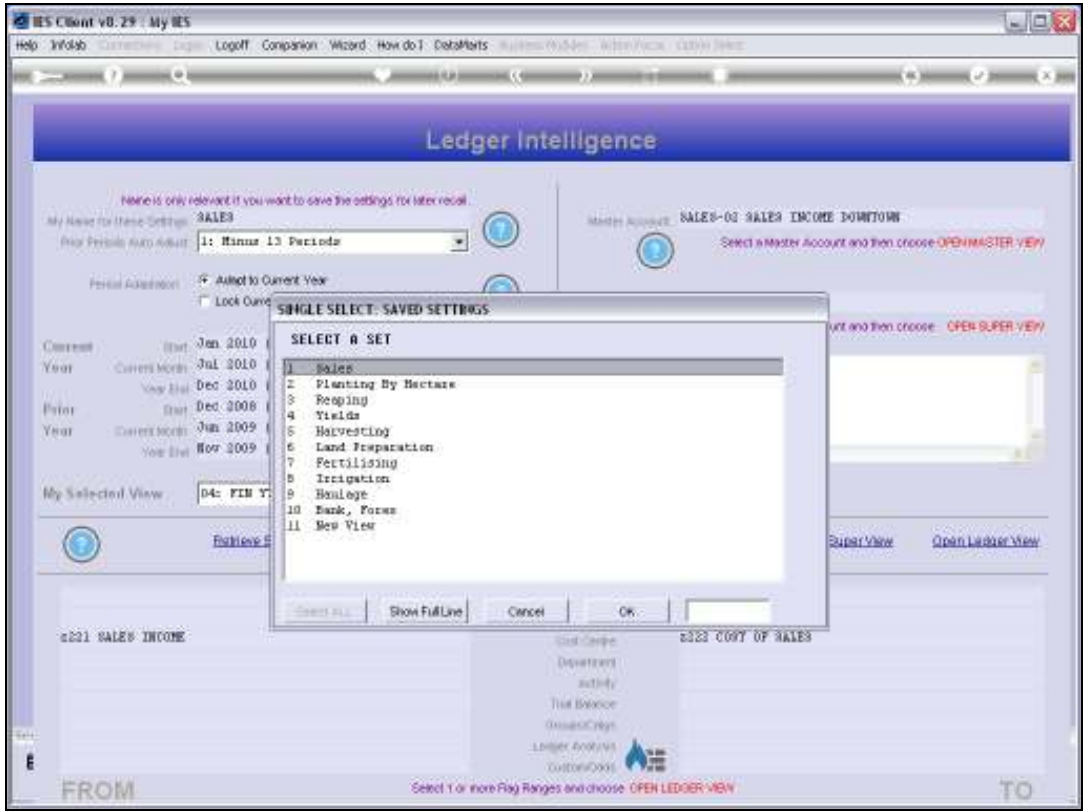


Slide 8

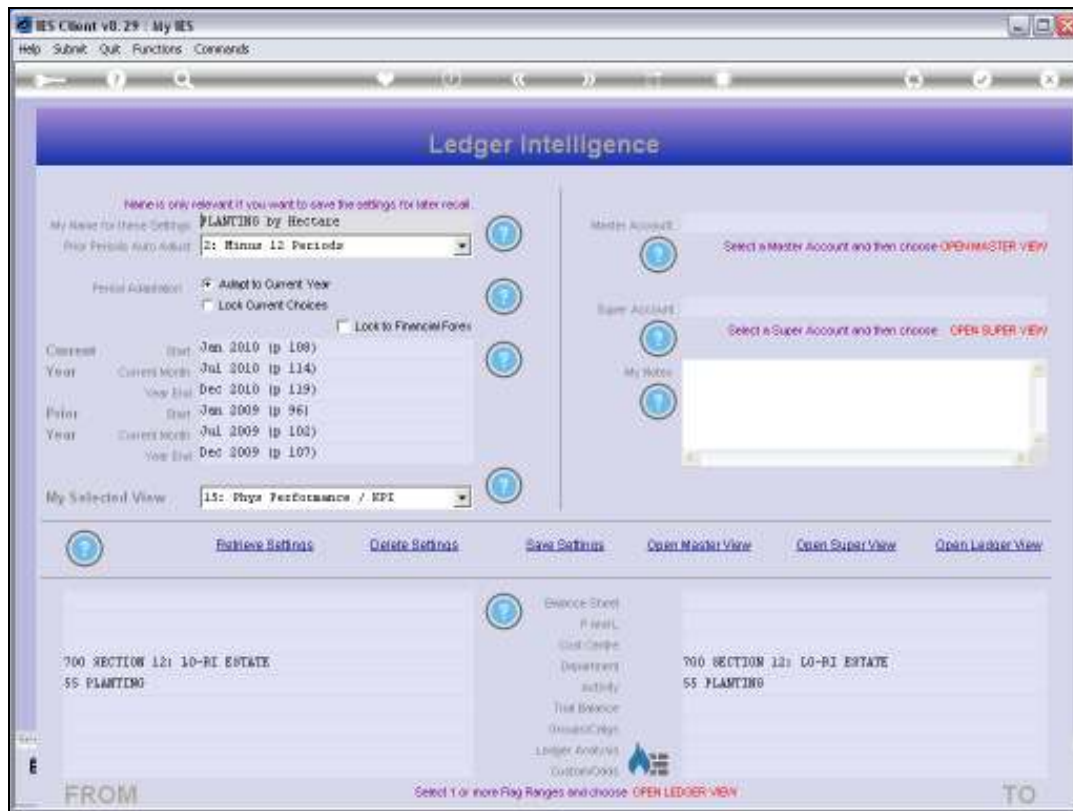
Slide notes:



Slide 9
Slide notes:



Slide 10
Slide notes:



Slide 11

Slide notes: 'Retrieve Settings' is the function we use to switch between View Sets.