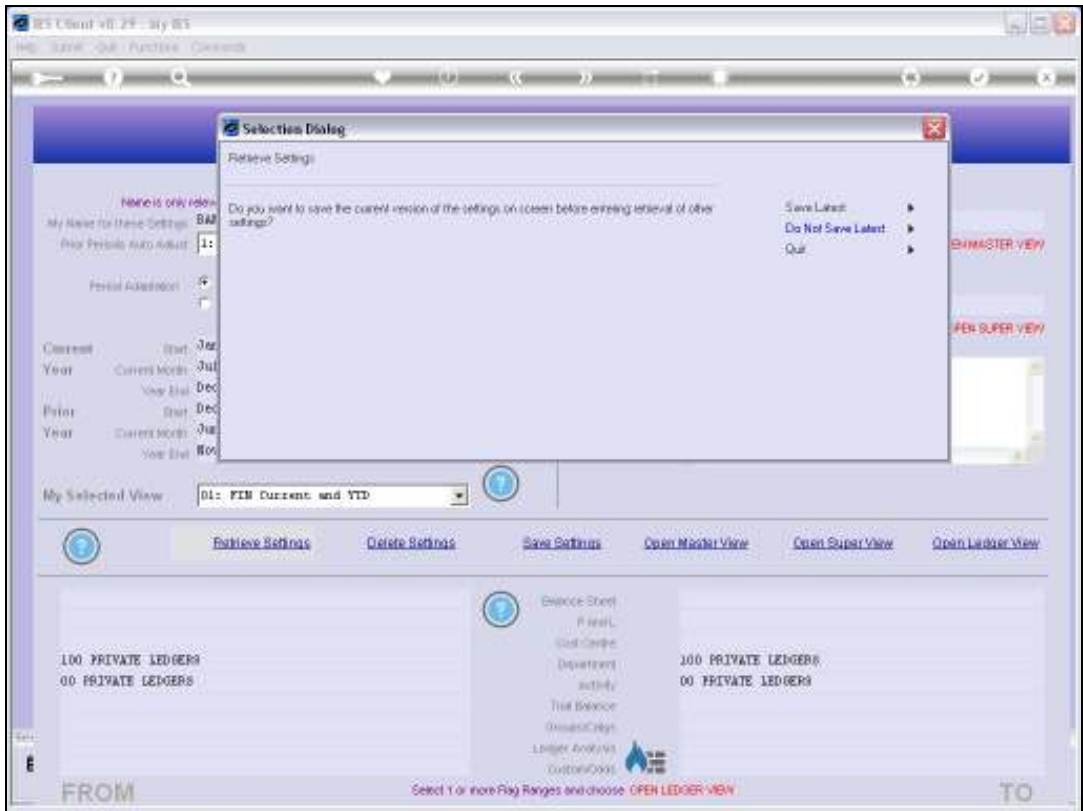


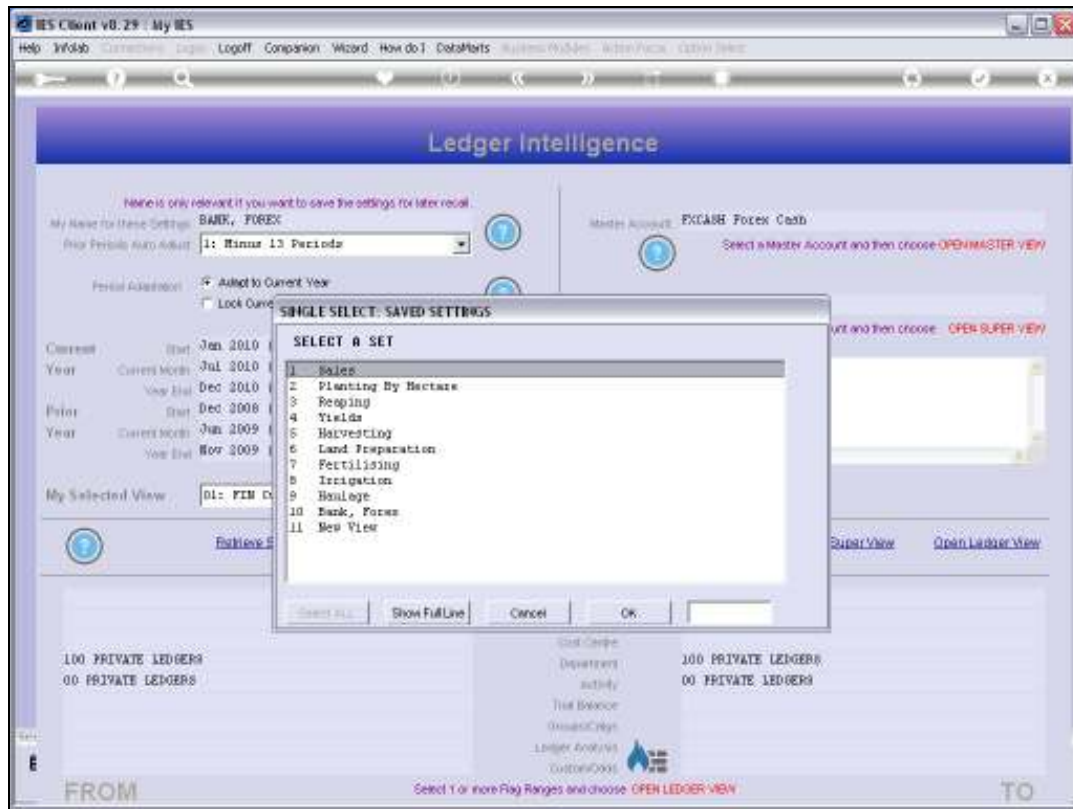
Slide 1

Slide notes: We may use 'Delete Settings' to remove a View Set that we no longer wish to use again.



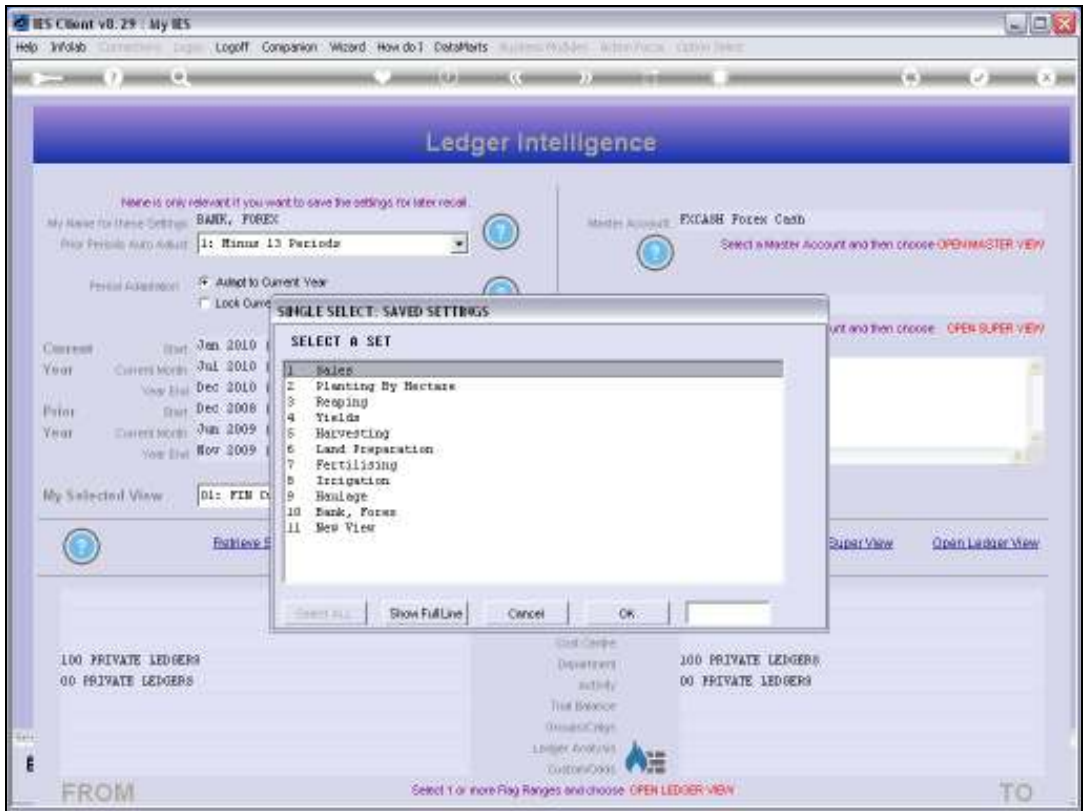
Slide 2

Slide notes:

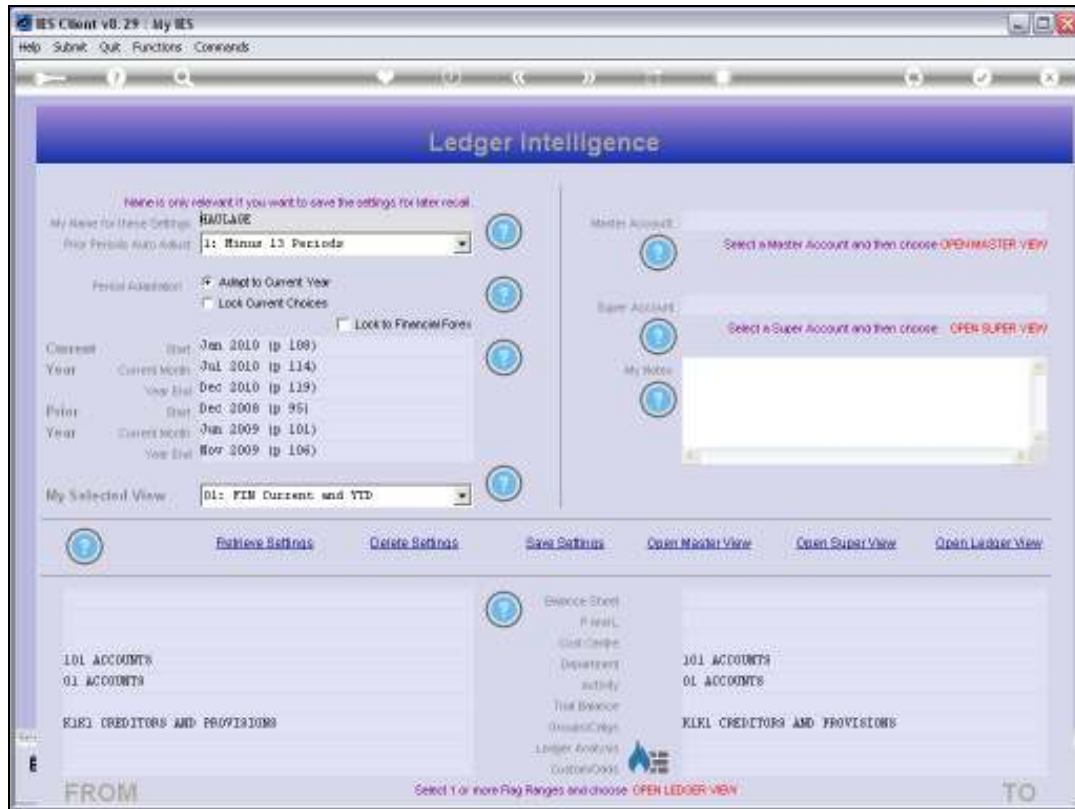


Slide 3

Slide notes: Notice on this list that we have an option called 'Haulage'.

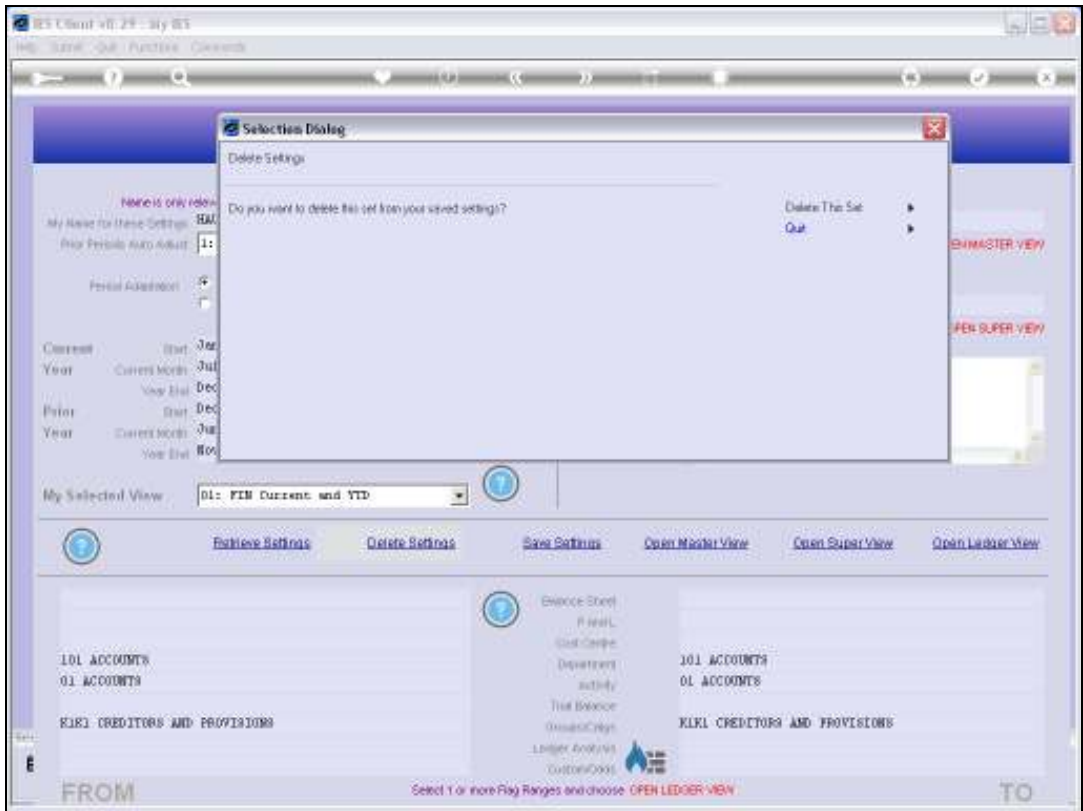


Slide 4
Slide notes:

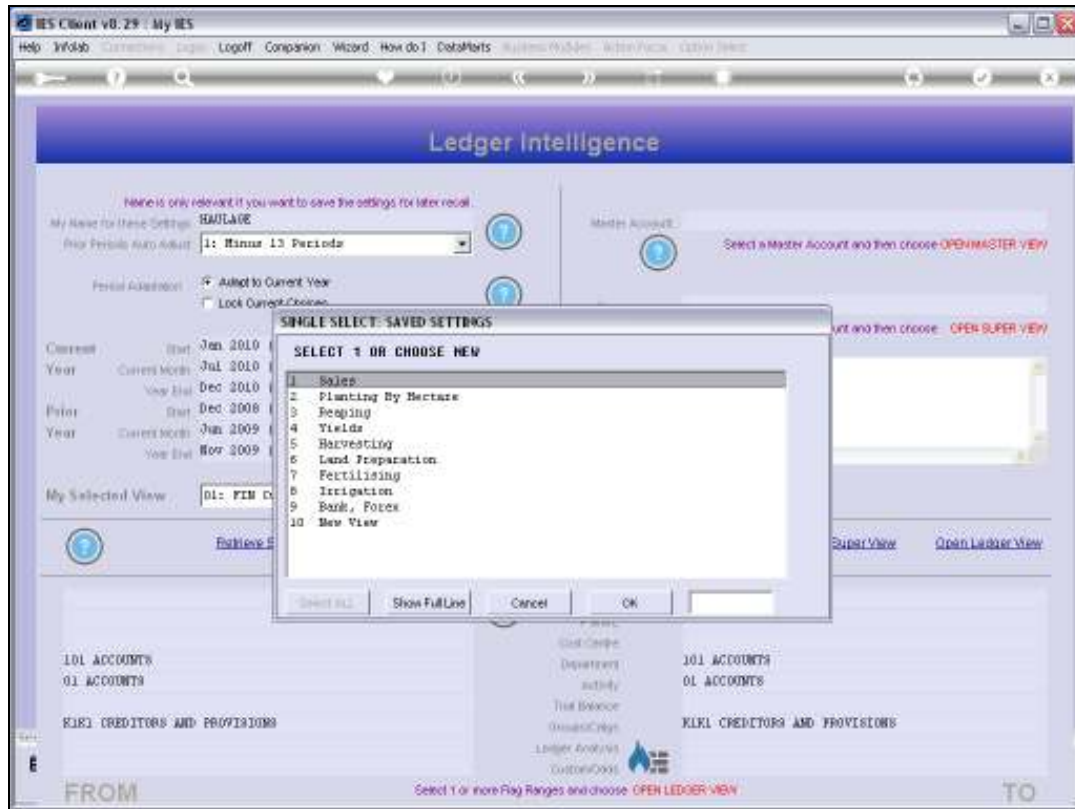


Slide 5

Slide notes: We do not want to use this View Set ever again, so we choose 'Delete Settings'.

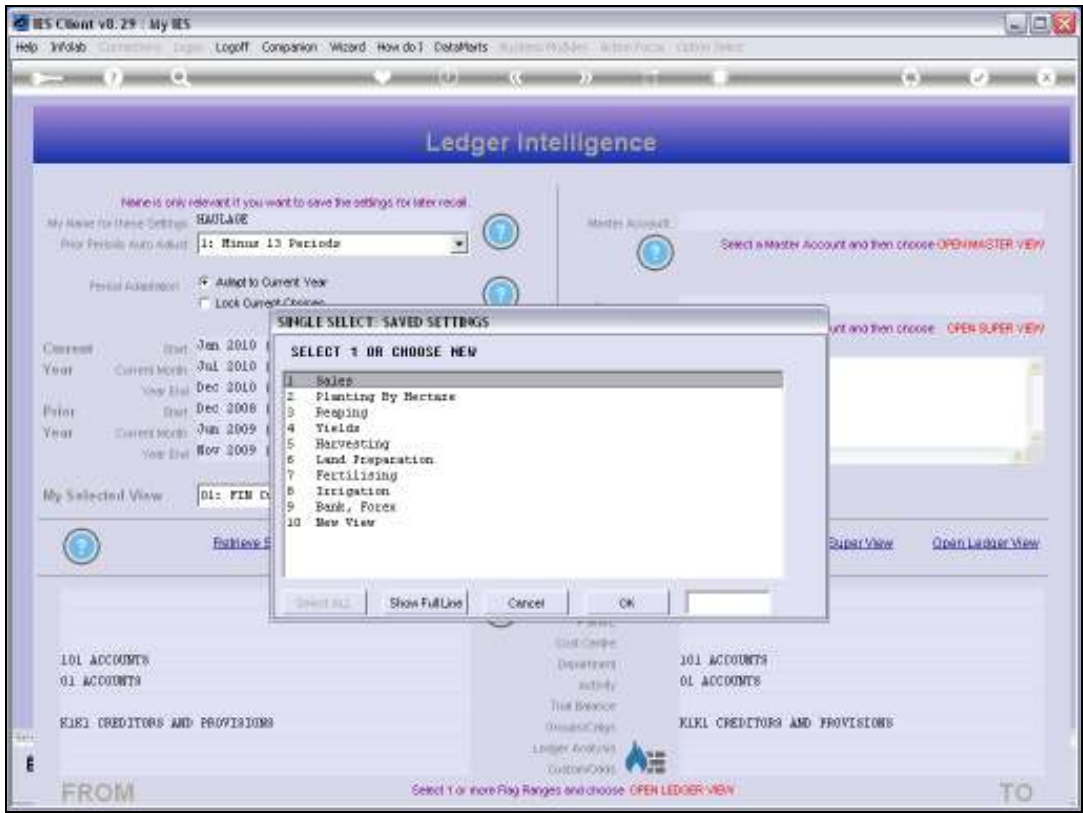


Slide 6
Slide notes:

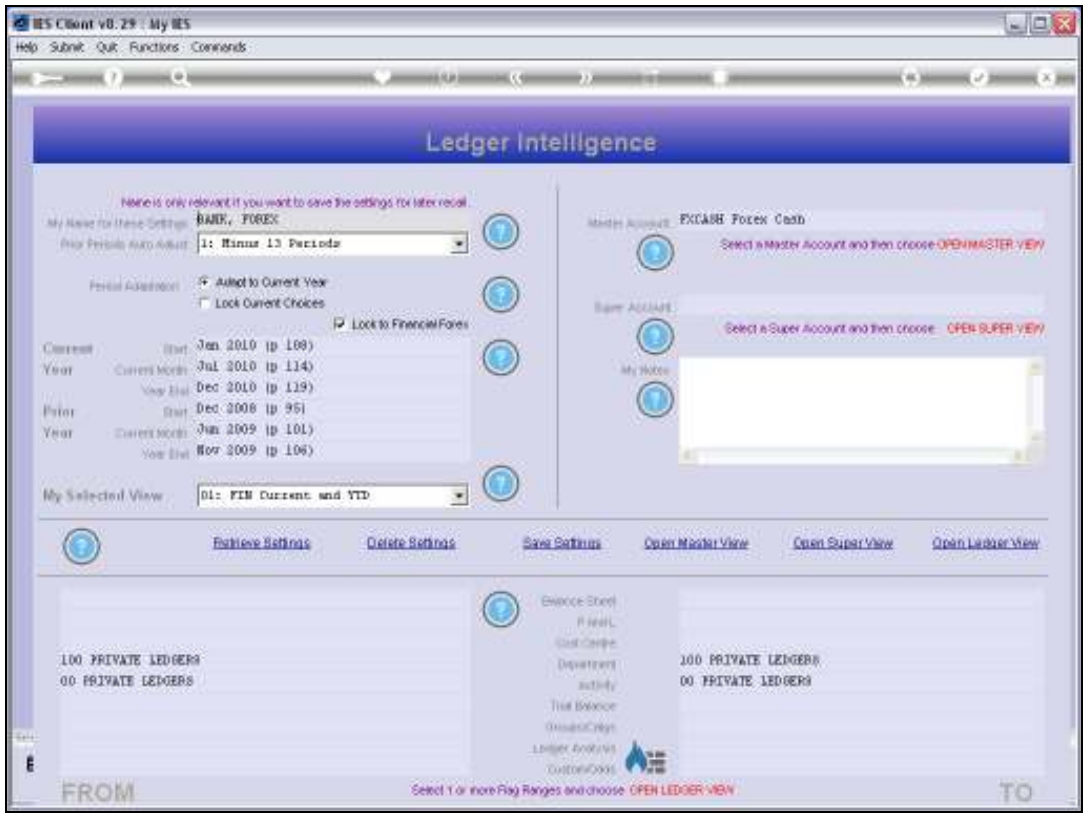


Slide 7

Slide notes: And notice that after confirming the 'delete', the 'Haulage' option is no longer on our list of View Sets.



Slide 8
Slide notes:



Slide 9
Slide notes: