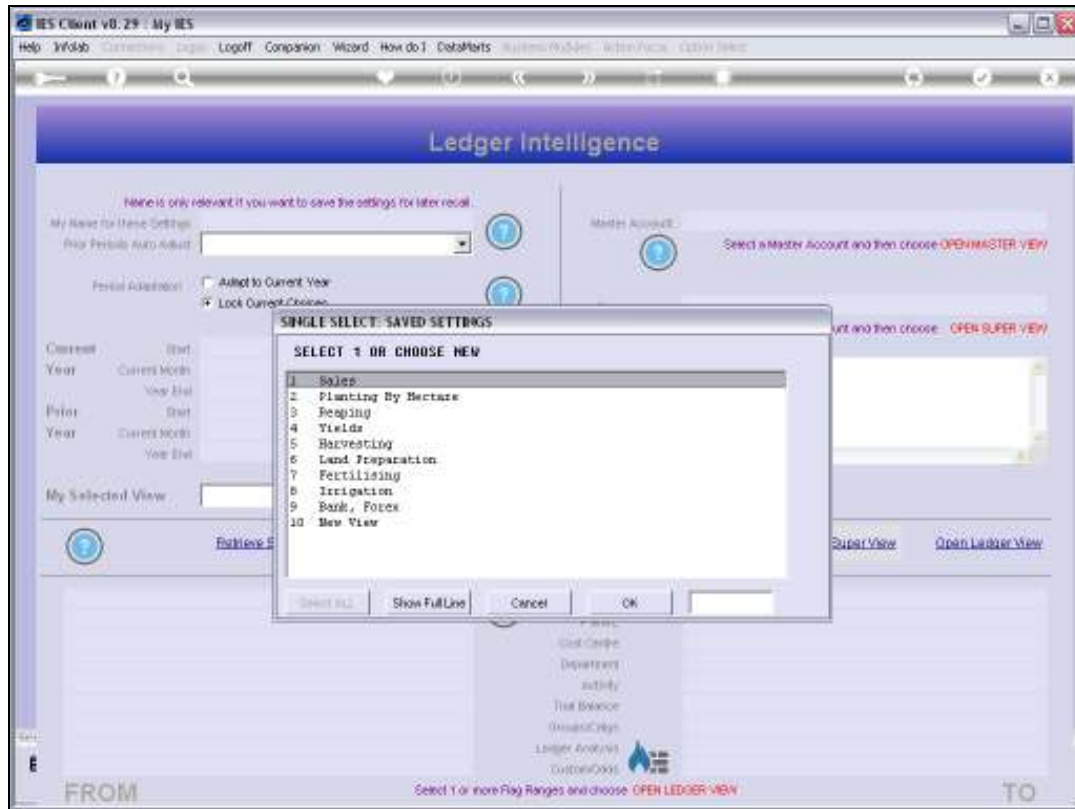




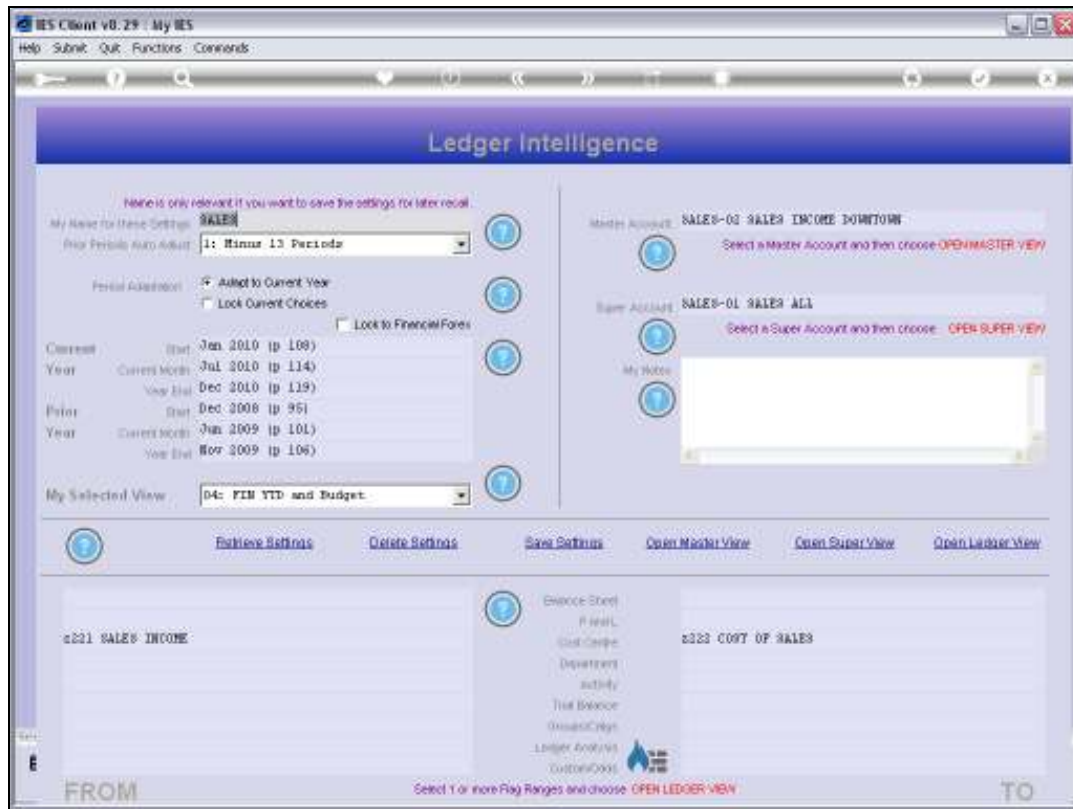
Slide 1

Slide notes: When we use Business Intelligence, we work with View Sets that should provide the answers we are looking to obtain.



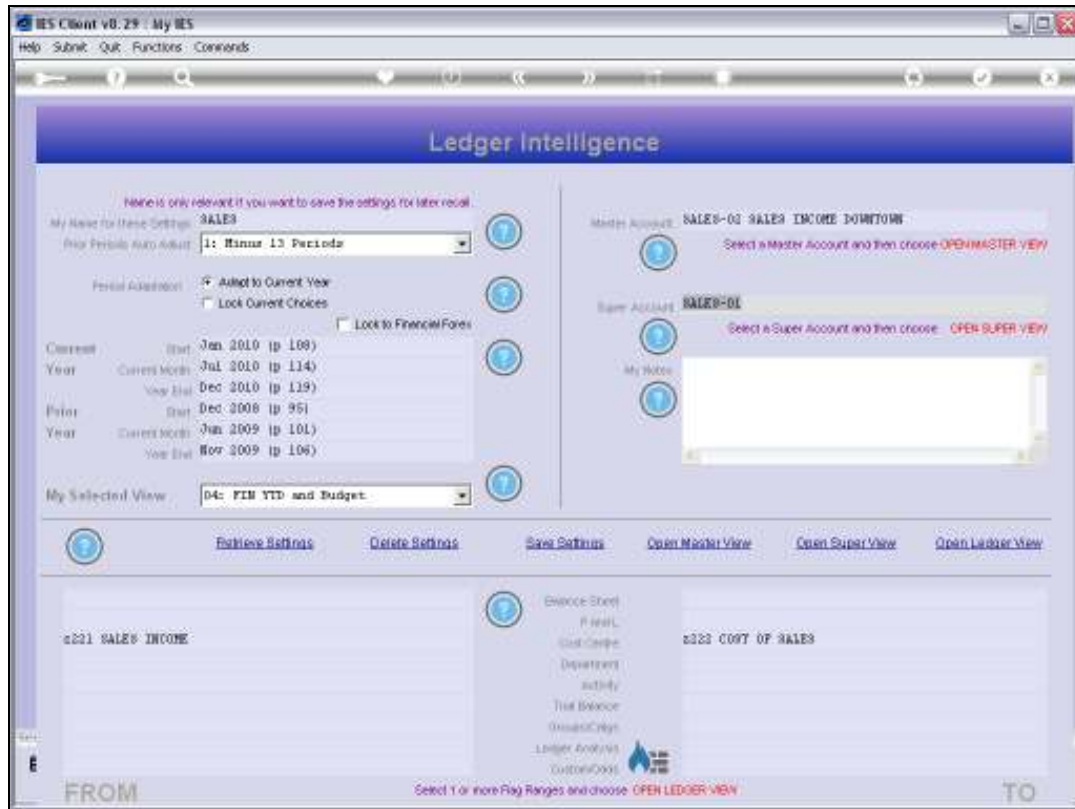
Slide 2

Slide notes: When we enter the BI system, our prior established View Sets are offered for selection, because they are re-usable. For example, if we have a 'Sales' View Set that reveal what we want to know about our Retail Sales, then we may want to use this same View Set again and again, week after week, or month after month.



Slide 3

Slide notes: Apart from selecting a View Set from the list, we can also choose a 'New View' and just work with that View on a dynamic basis, then save it as a View Set for re-use, or simply discard it after a working session.

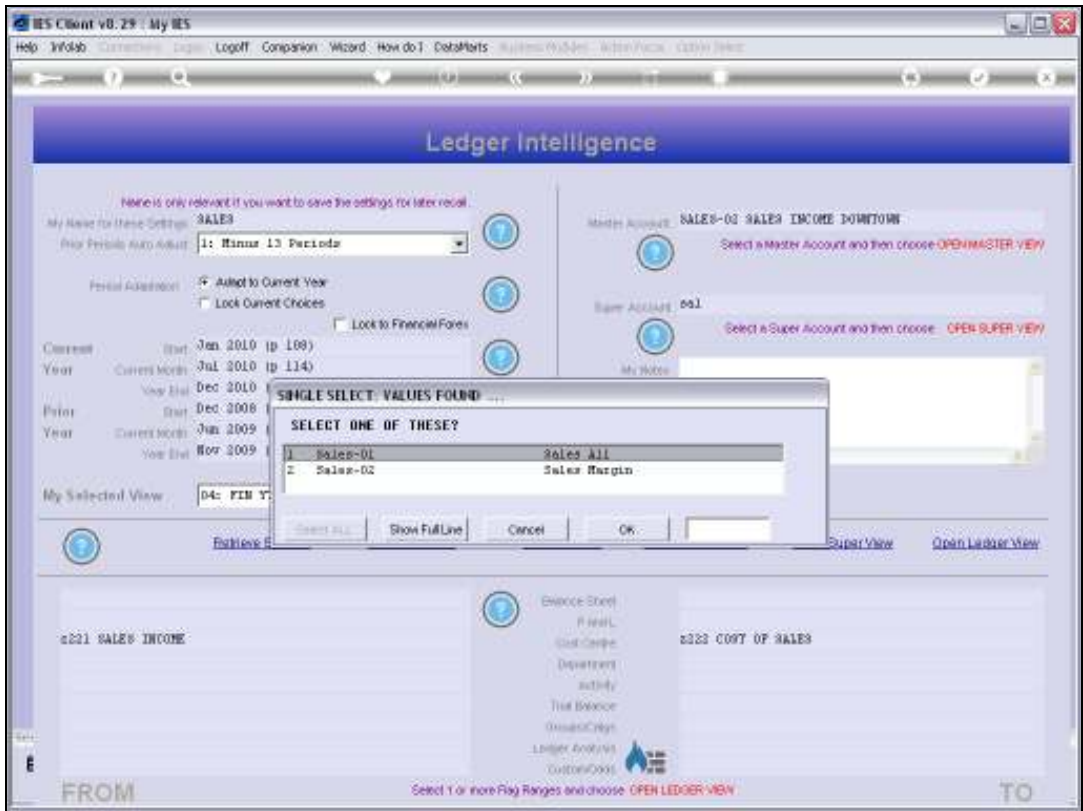


Slide 4

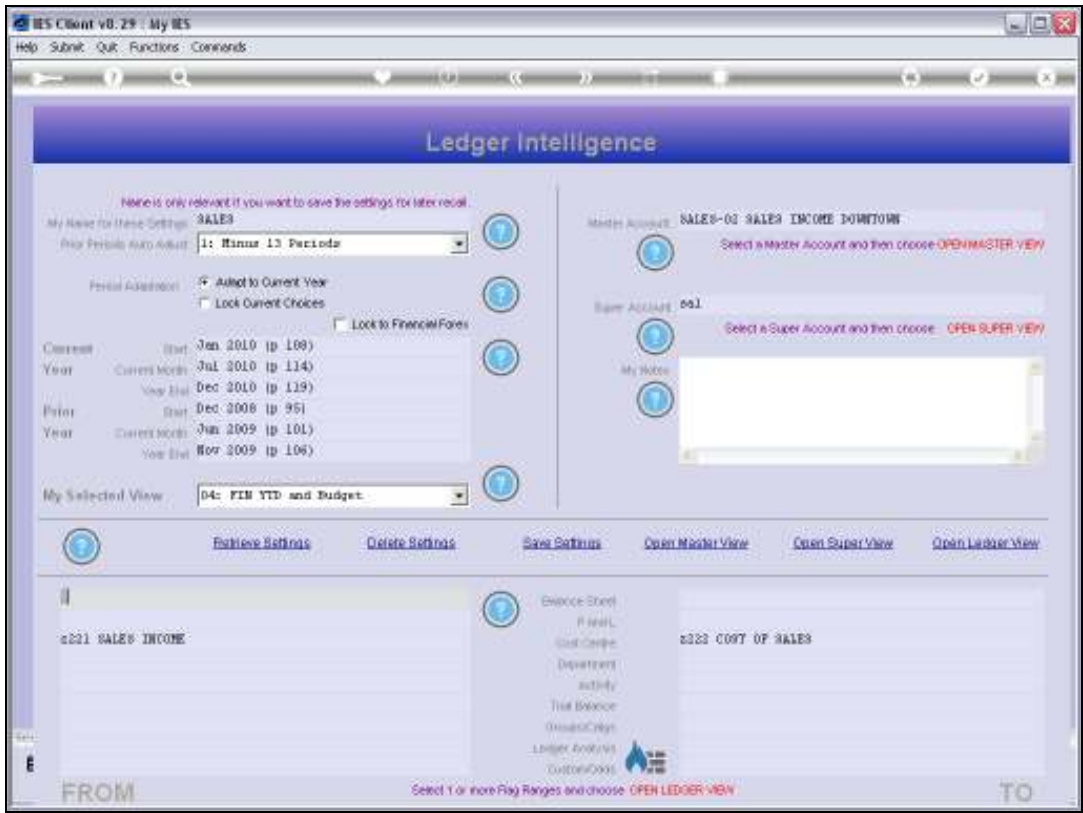
Slide notes: The Current View Set here includes Master, Super and Ledger Views. A Ledger View is a collection of GL Accounts that are selected by using the Chart of Accounts flags. A Master View is a Master Account that is established in the Chart, outside of BI, and is put together from any selection of GL Accounts. And a Super Account is also constructed in the Chart, and includes Master Accounts. So we have a veritable hierarchy of possible and available Views to use when we build a View Set.



Slide 5
Slide notes:

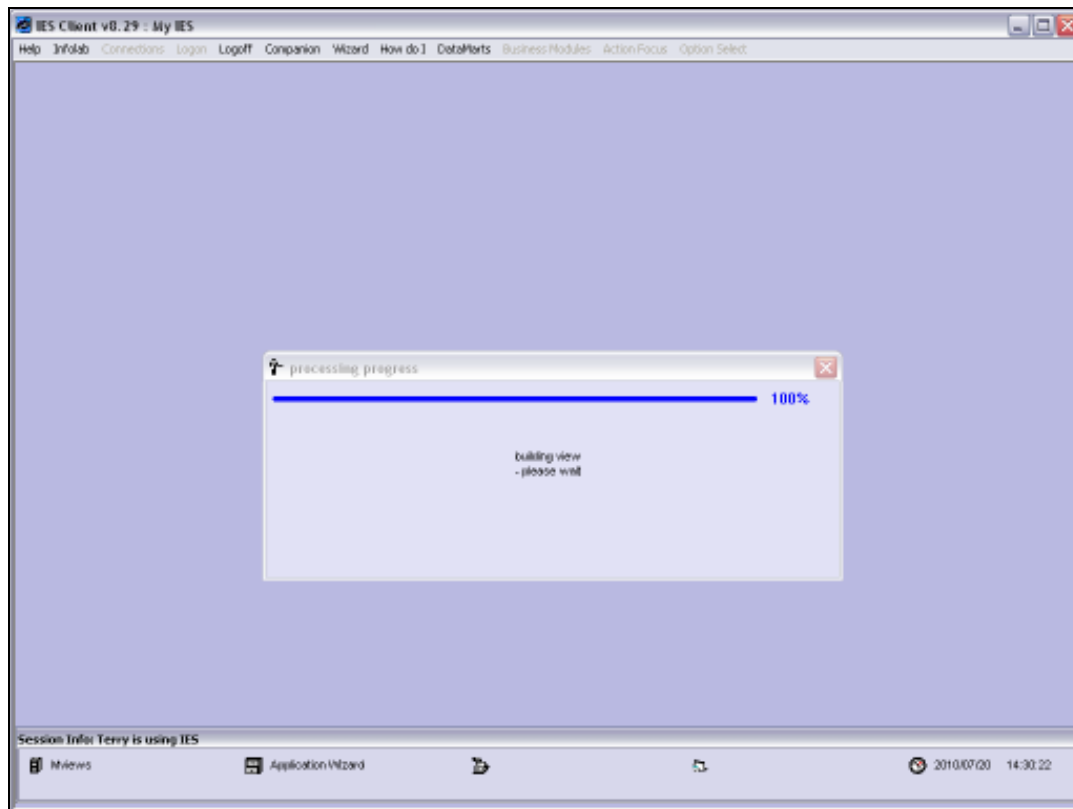


Slide 6
Slide notes:



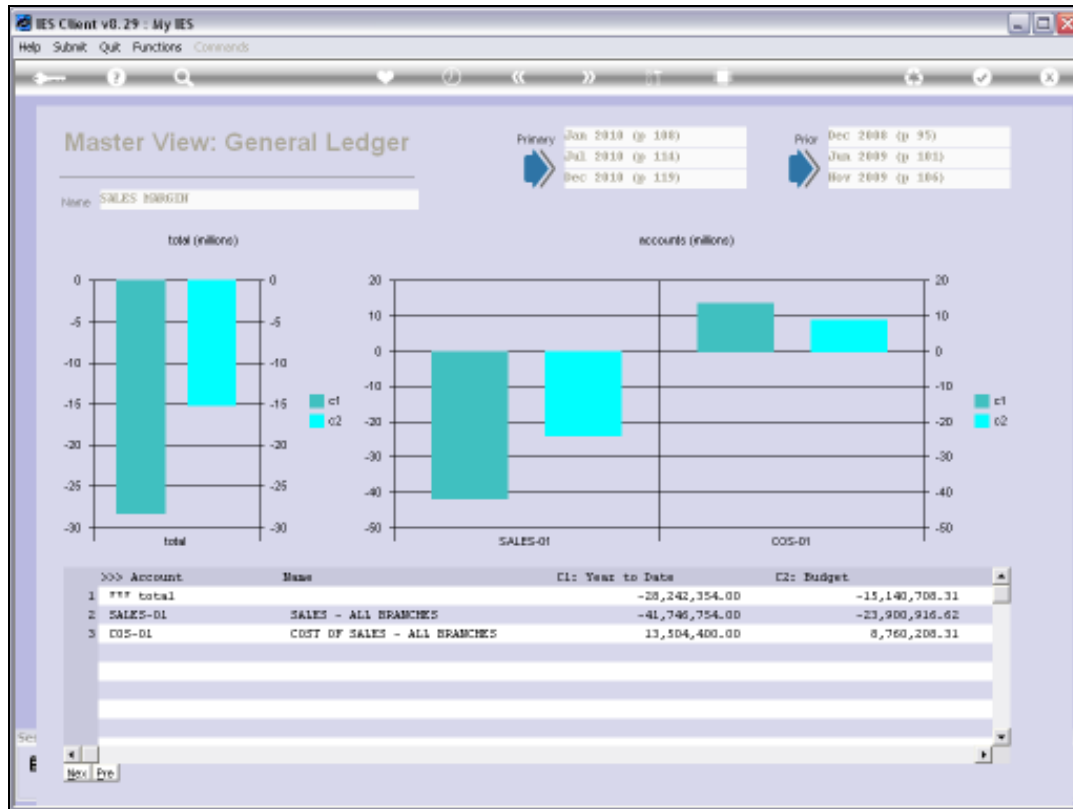
Slide 7

Slide notes:



Slide 8

Slide notes:



Slide 9

Slide notes: Here is a quick example of a View when opened. In this case, the purpose of the View is to reveal the total Sales and Cost of Sales for all Branches of the Retail Enterprise, thereby revealing also the Net Income.

IES Client v8.29 : My IES

Help Submit Quit Functions Commands

Ledger Intelligence

None is only relevant if you want to save the settings for later recall.

My Master for these Settings: **SALES**

Periods Auto Adjust: **1: Manual 13 Periods**

Period Adjustment: ☒ Adjust to Current Year ☐ Lock Current Choices ☐ Lock to Financial Firms

Current Year	Start	End	Periods
Jan. 2010	Jan. 2010	Dec. 2010	12
Jul. 2010	Jul. 2010	Jun. 2011	12
Dec. 2010	Dec. 2010	Nov. 2011	12
Prior Year	Start	End	Periods
Dec. 2009	Dec. 2009	Nov. 2010	12
Jun. 2009	Jun. 2009	May. 2010	12
Nov. 2009	Nov. 2009	Oct. 2010	12

My Selected View: **D4: FIN YTD and Budget**

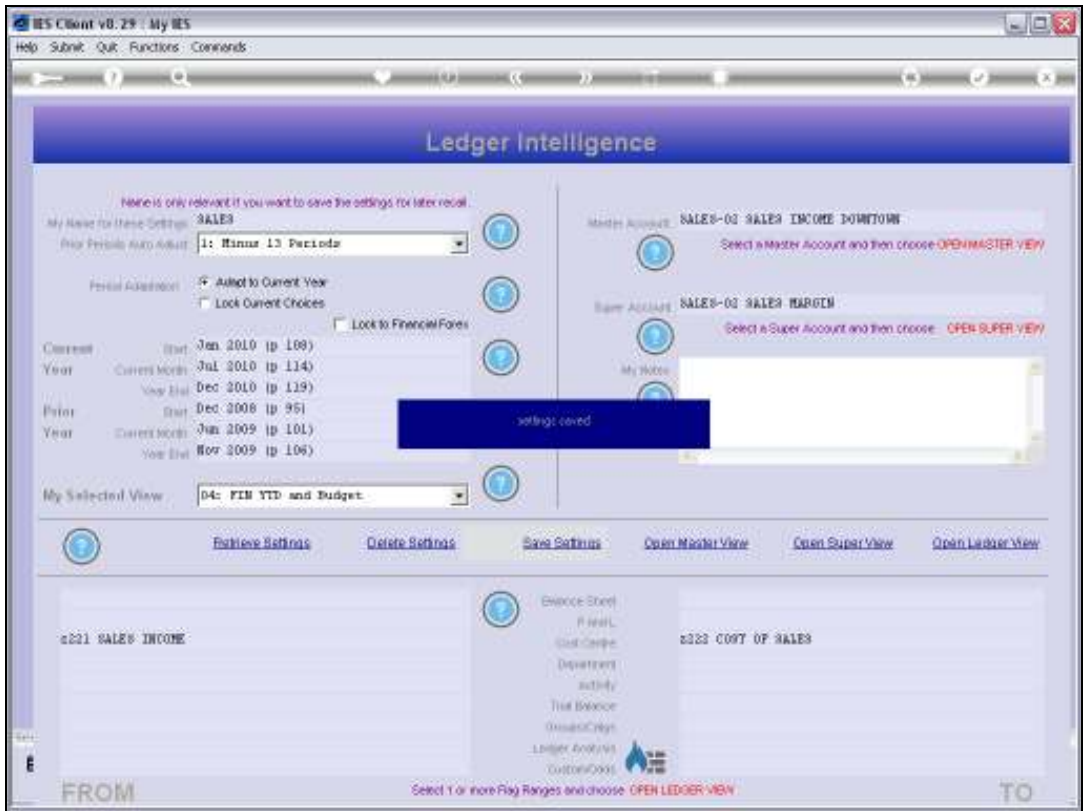
[Retrieve Settings](#)
[Delete Settings](#)
[Save Settings](#)
[Open Master View](#)
[Open Super View](#)
[Open Ledger View](#)

FROM TO

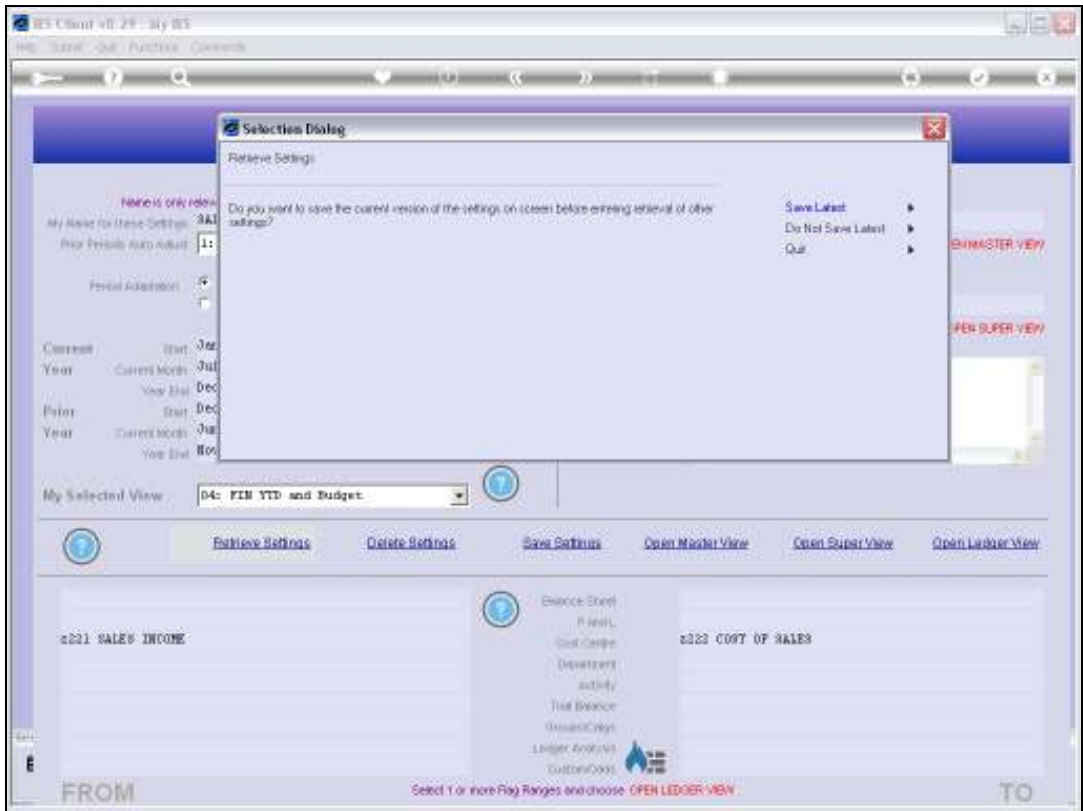
Select Y or more Flag Ranges and choose OPEN LEDGER VIEW

Slide 10

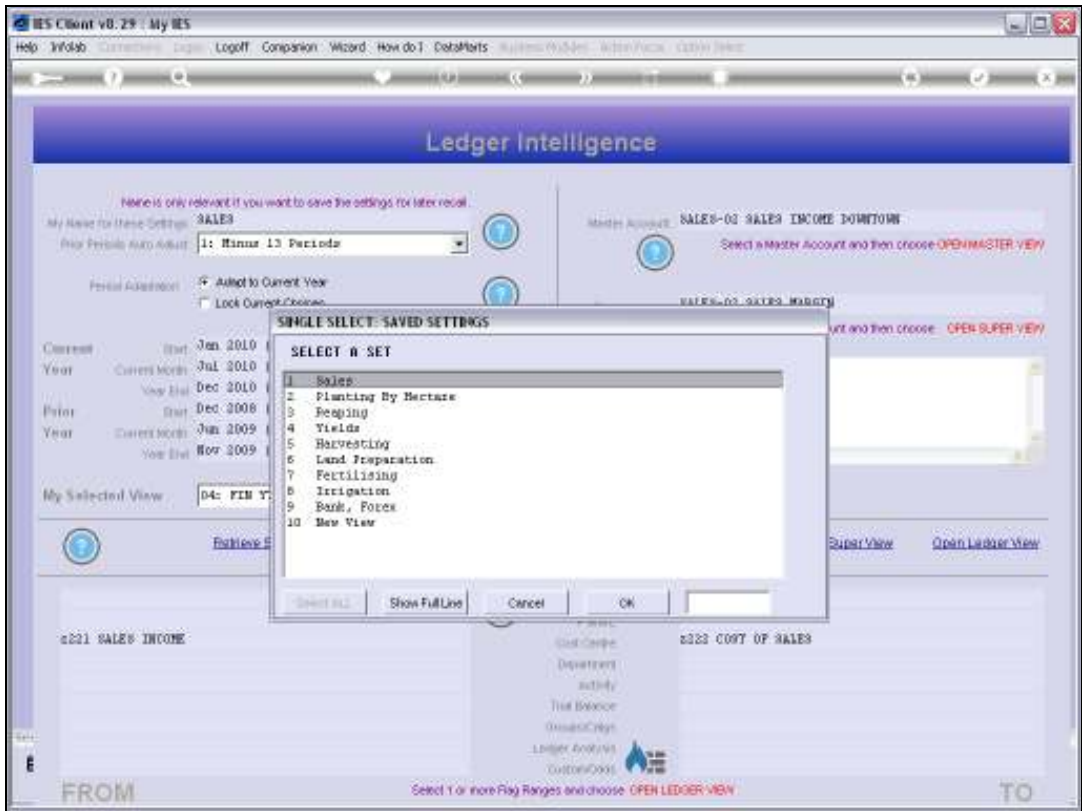
Slide notes: Any View that we construct and want to use again in future, we preserve by giving it a Name to recognize it by before we choose 'Save Settings'. The View Set will then always be available on the list when we enter BI or when we switch View Sets.



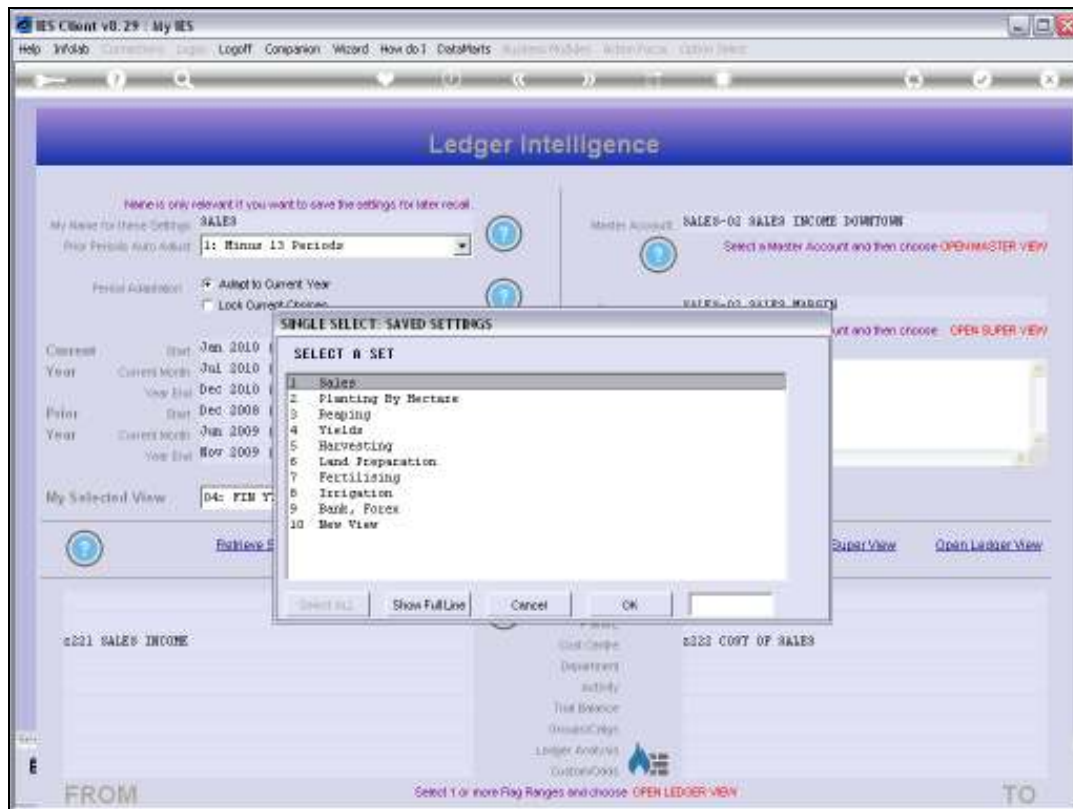
Slide 11
Slide notes:



Slide 12
Slide notes:

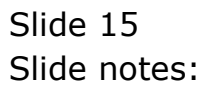


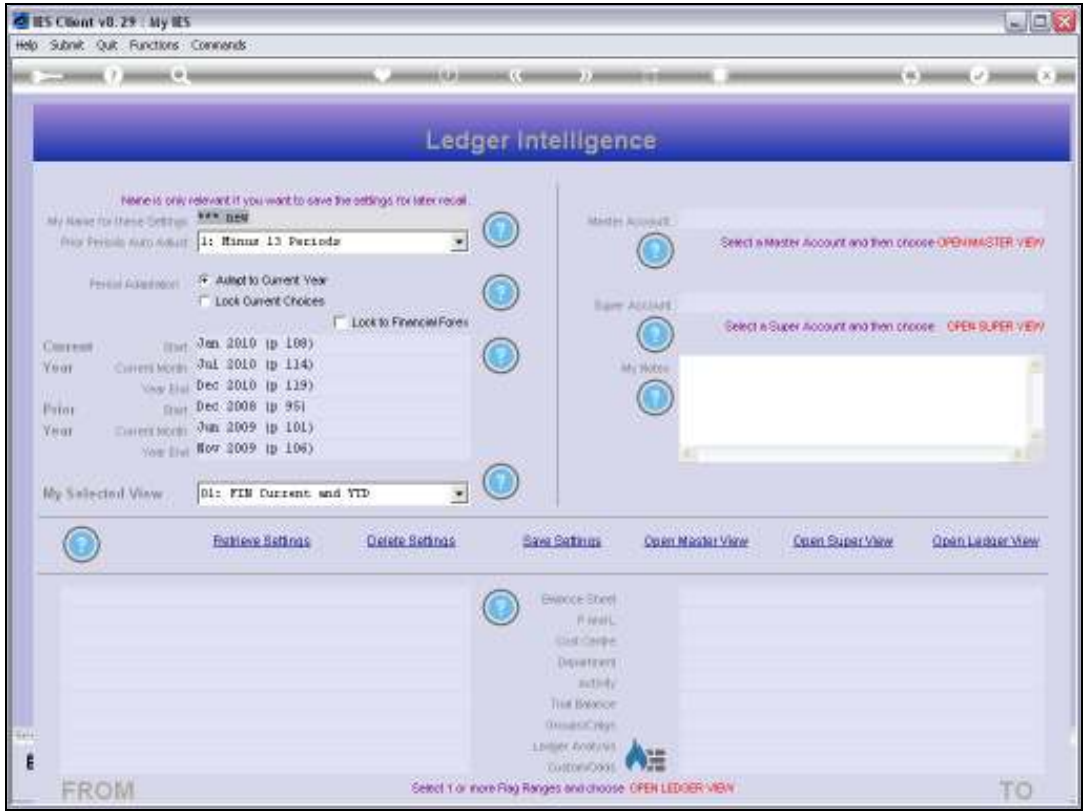
Slide 13
Slide notes:



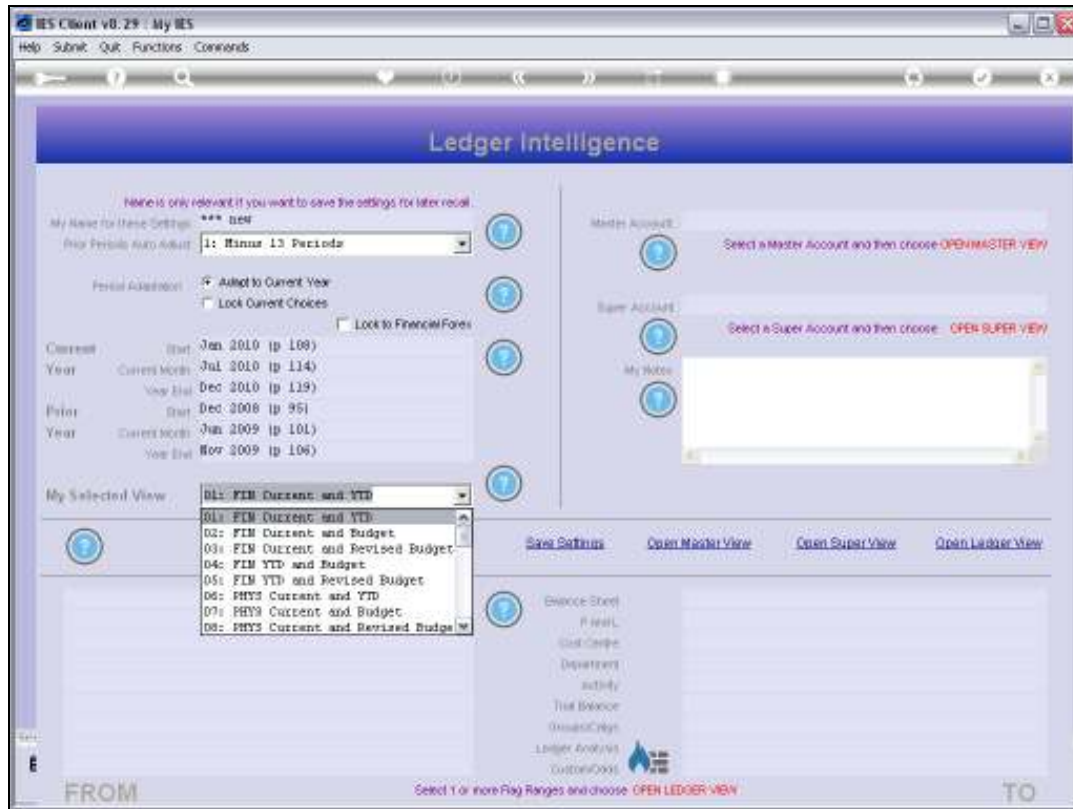
Slide 14

Slide notes: Now we do an example of establishing a new View Set.





Slide 16
Slide notes:

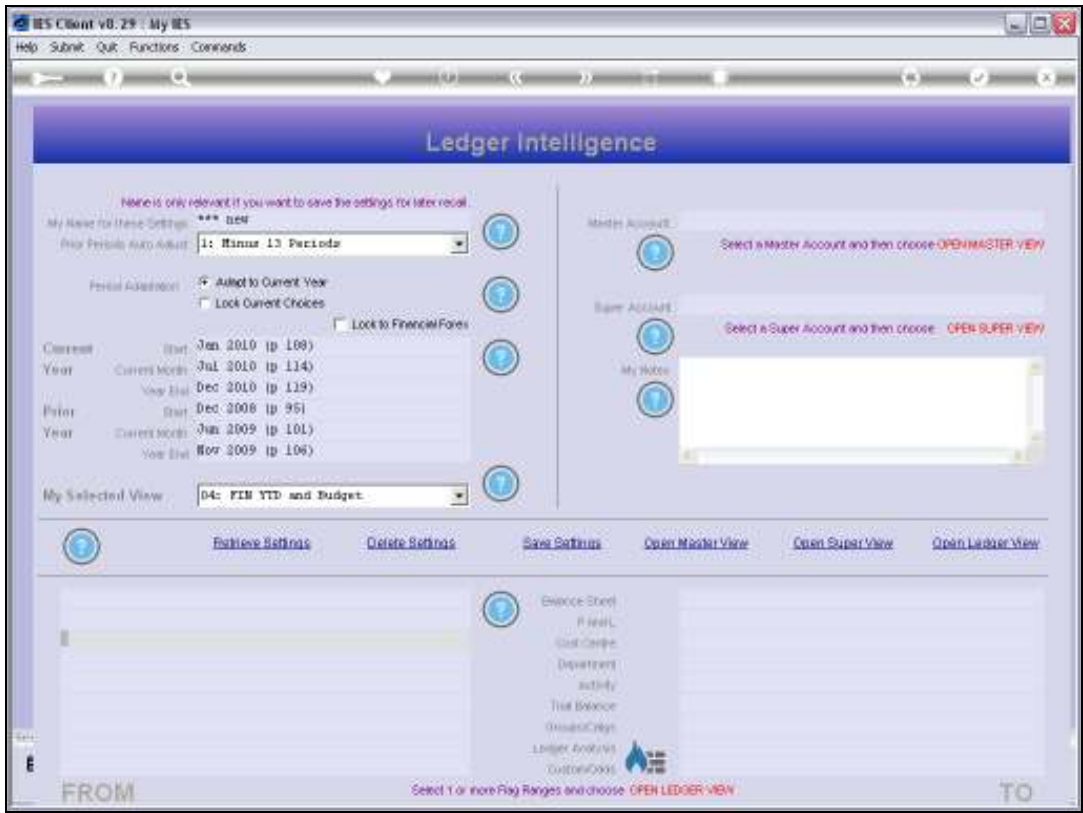


Slide 17

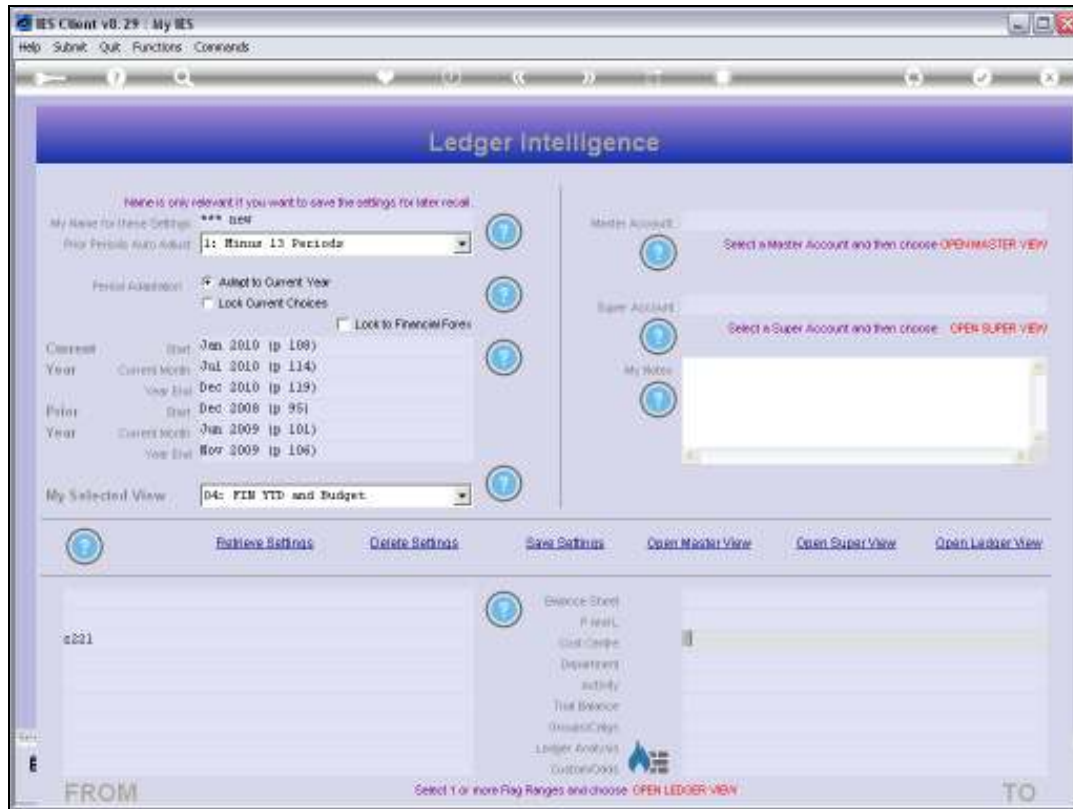
Slide notes: We choose the default Inner View which will be used whenever we open a Ledger, Master or Super View on this View Set. And the selected option is only the default, because we can select any of the other options on demand while using the View Set.



Slide 18
Slide notes:

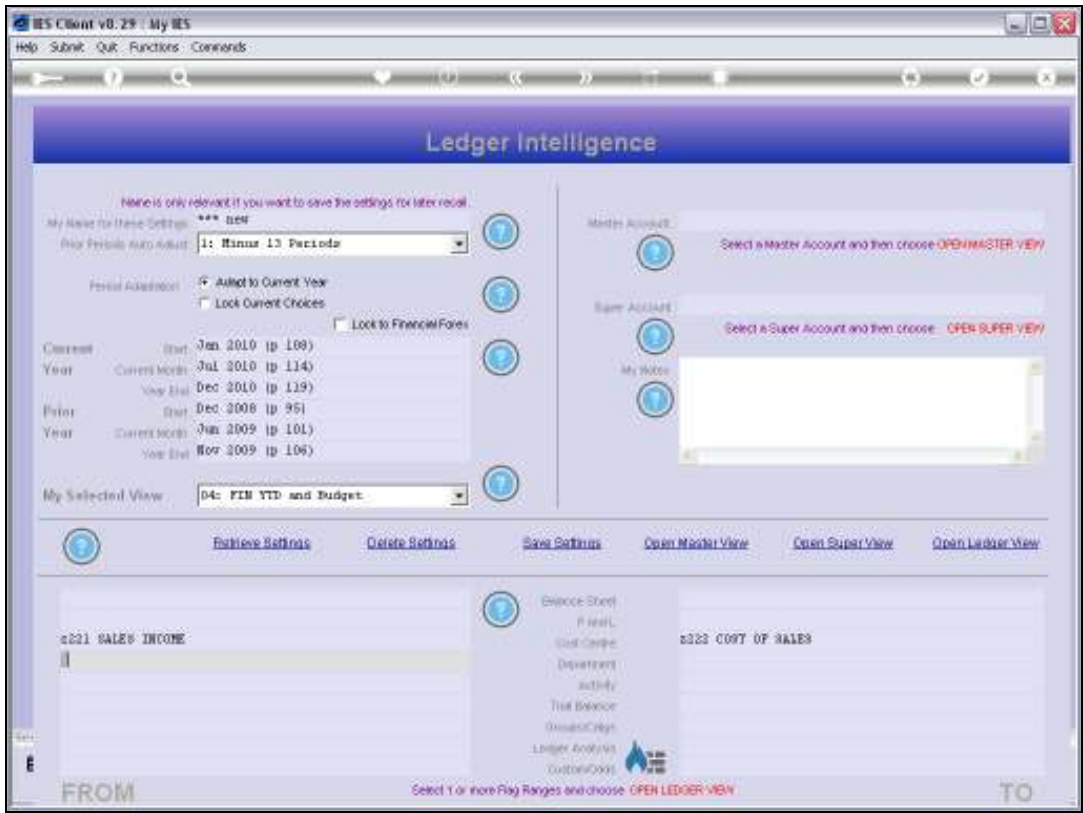


Slide 19
Slide notes:

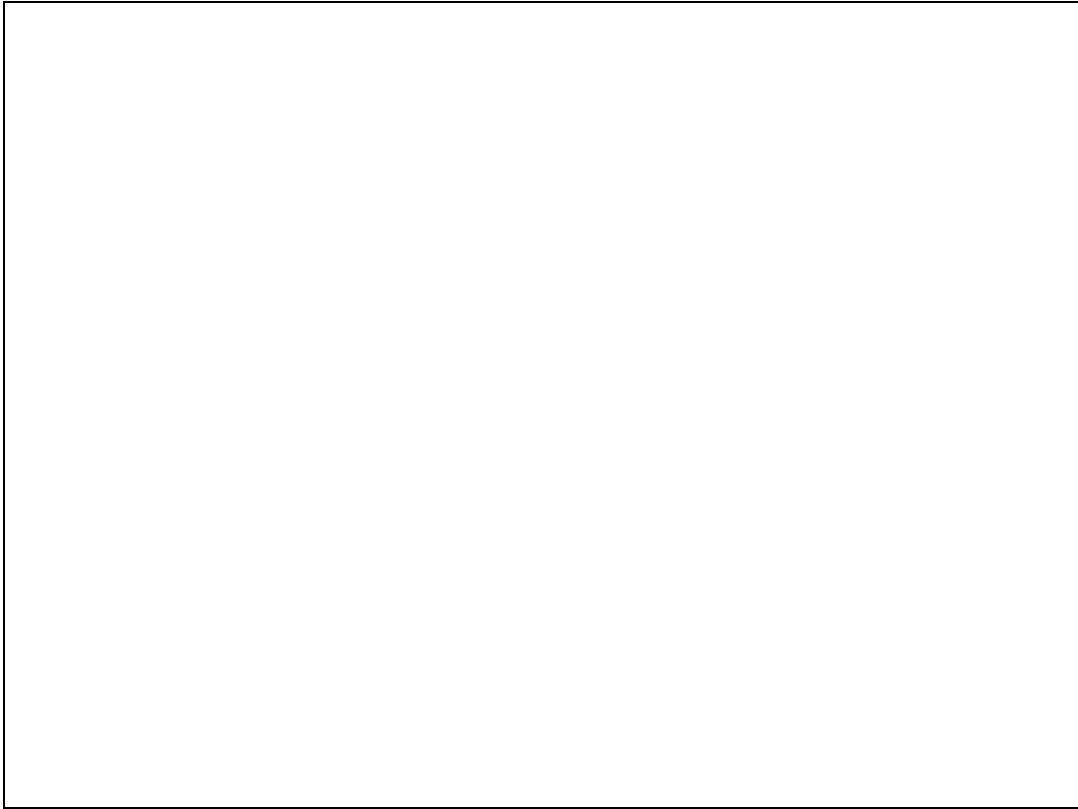


Slide 20

Slide notes: We can establish a Ledger Selection from the Chart for a Ledger View by using the Chart Flag options. If we do not know the Codes or Names we are looking for, then of course we can use the lookup. This is just an example.

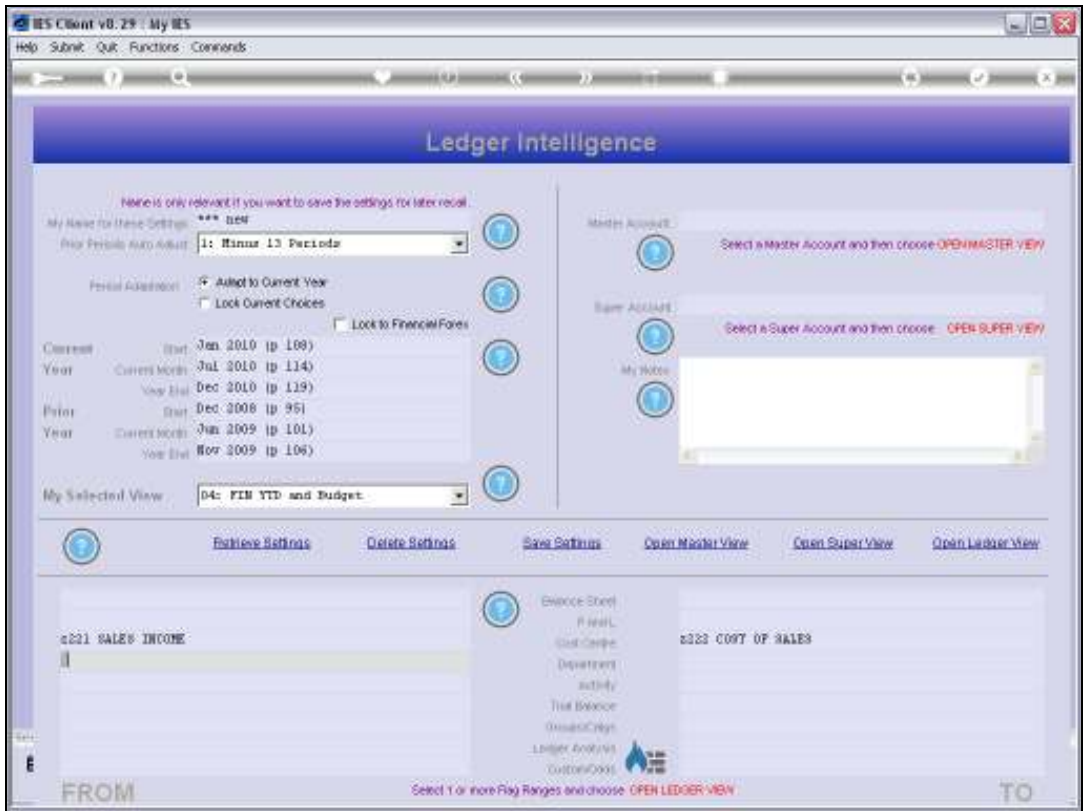


Slide 21
Slide notes:

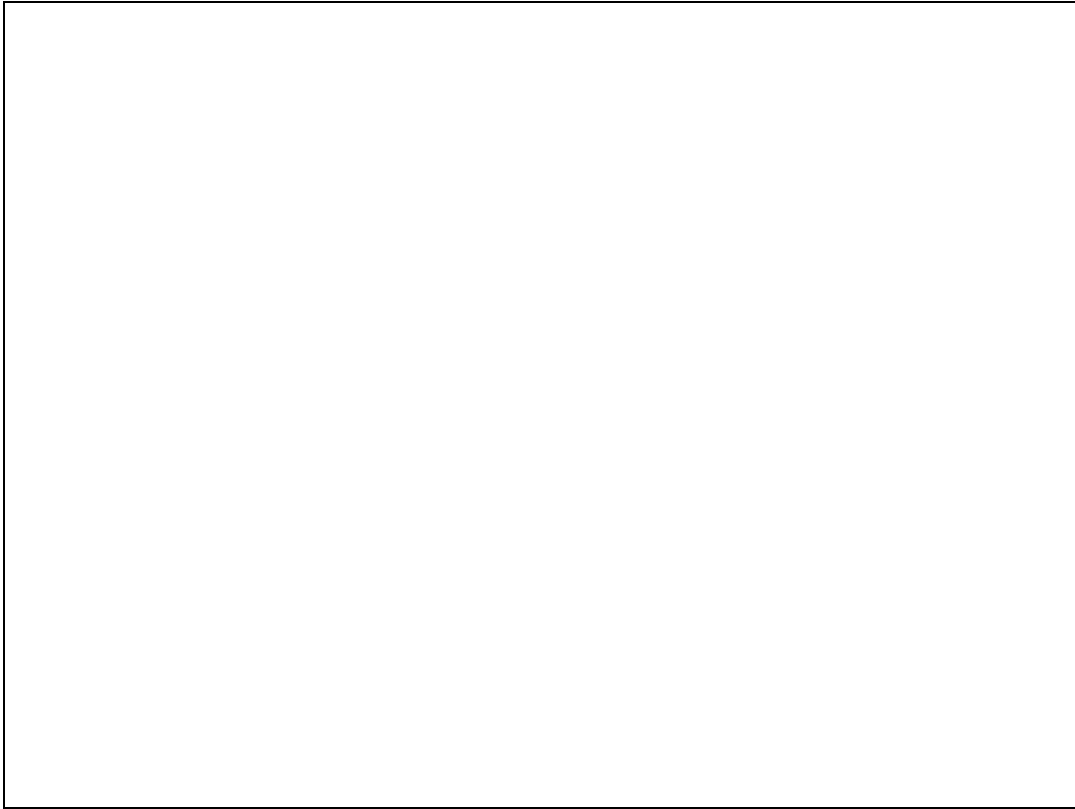


Slide 22

Slide notes:

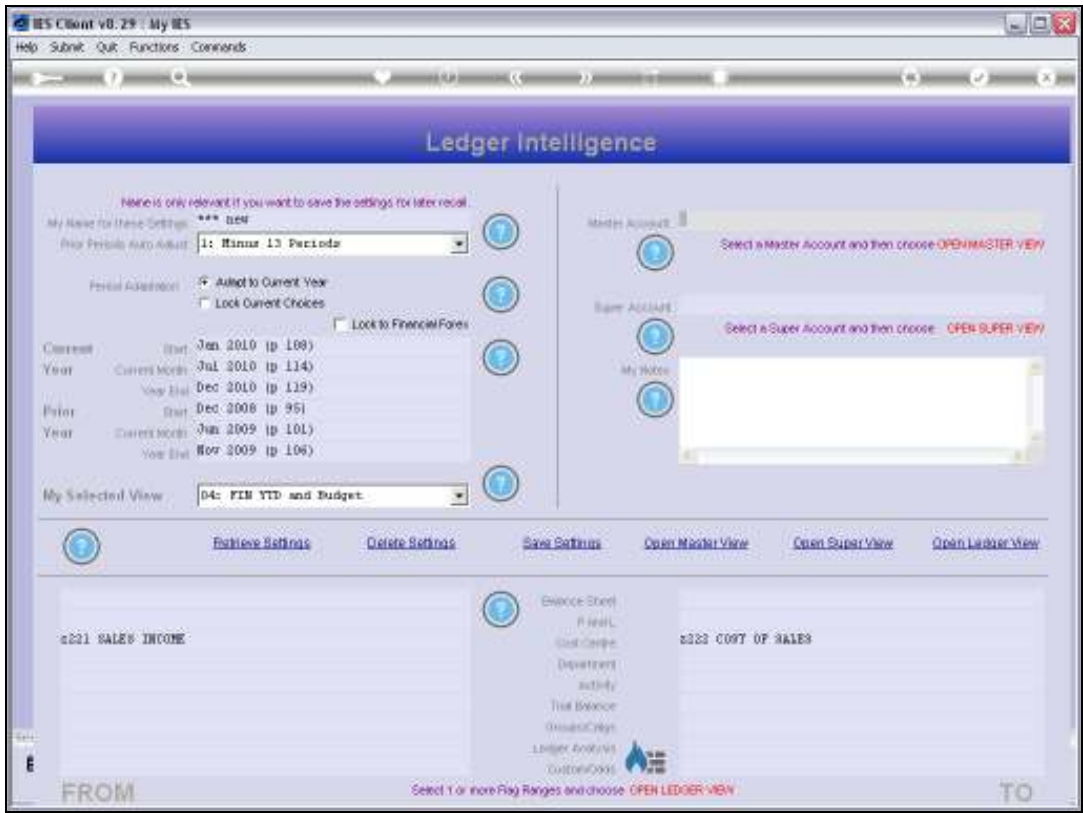


Slide 23
Slide notes:

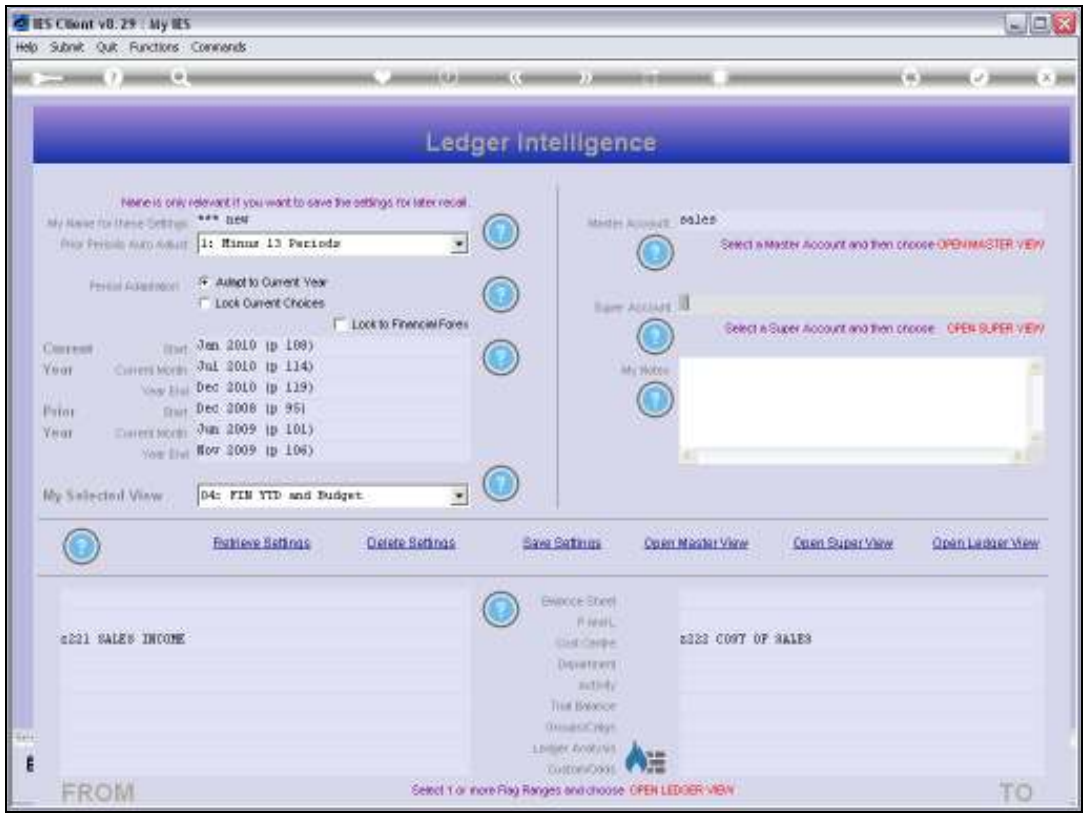


Slide 24

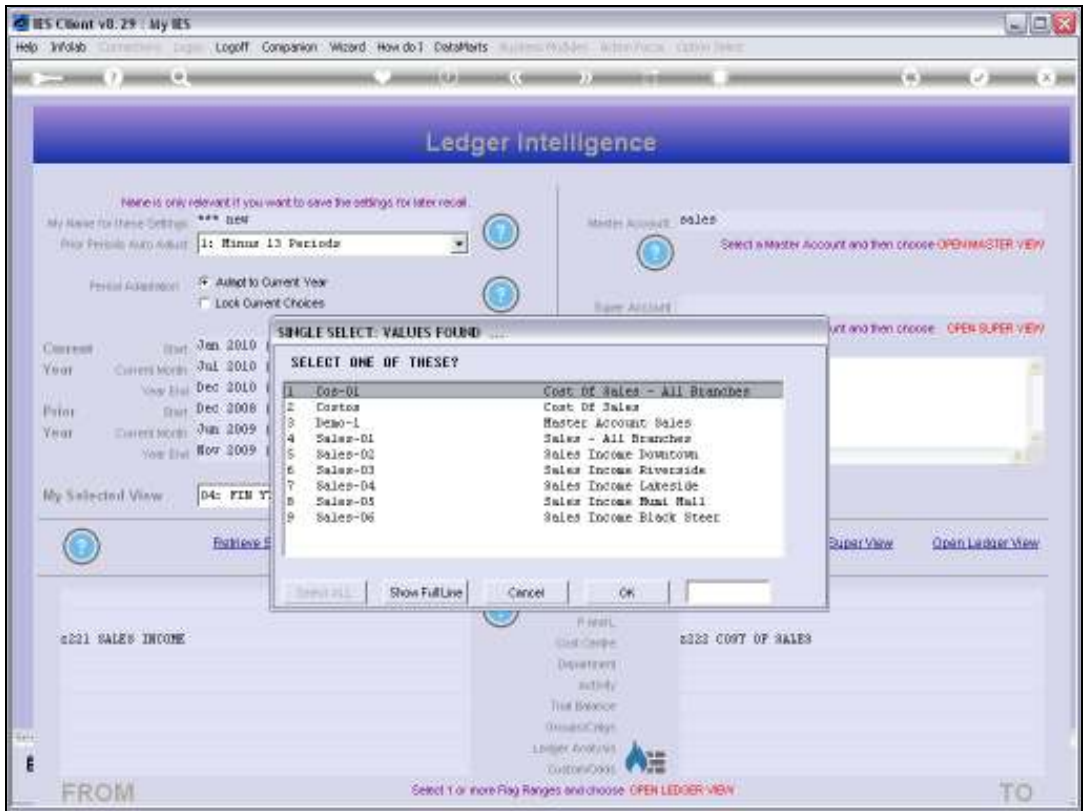
Slide notes: It is optional to include Master and Super views also.



Slide 25
Slide notes:



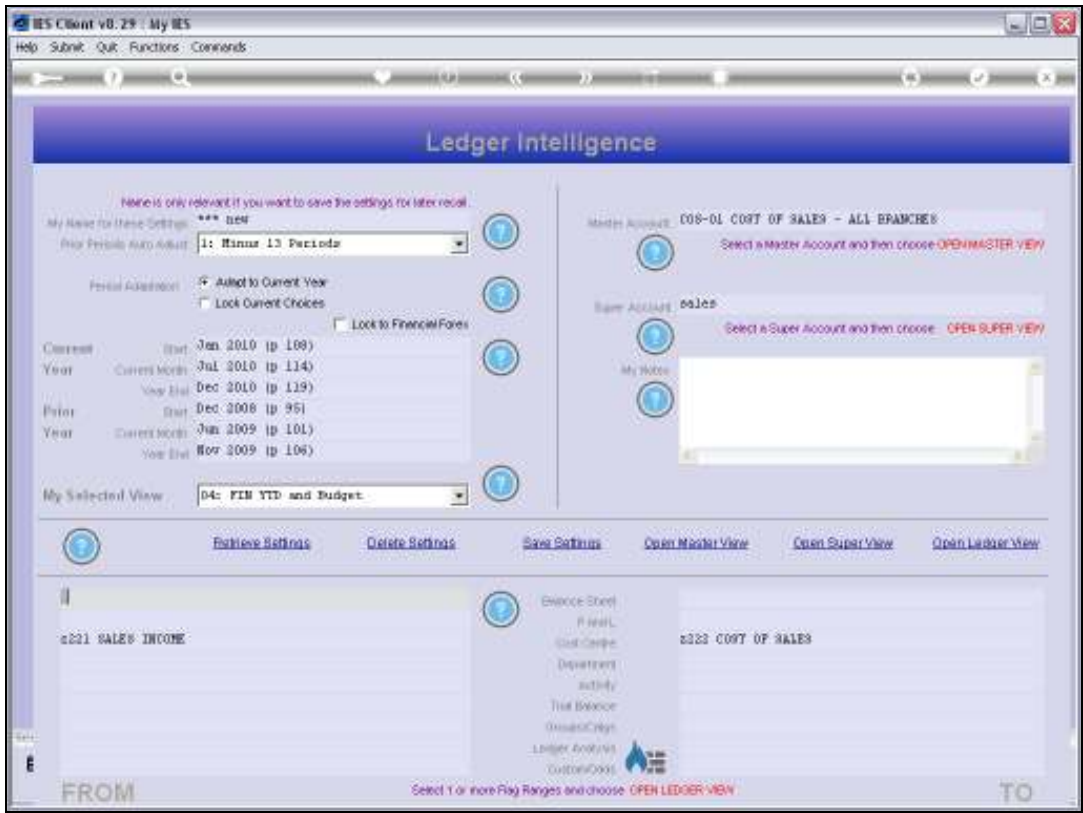
Slide 26
Slide notes:



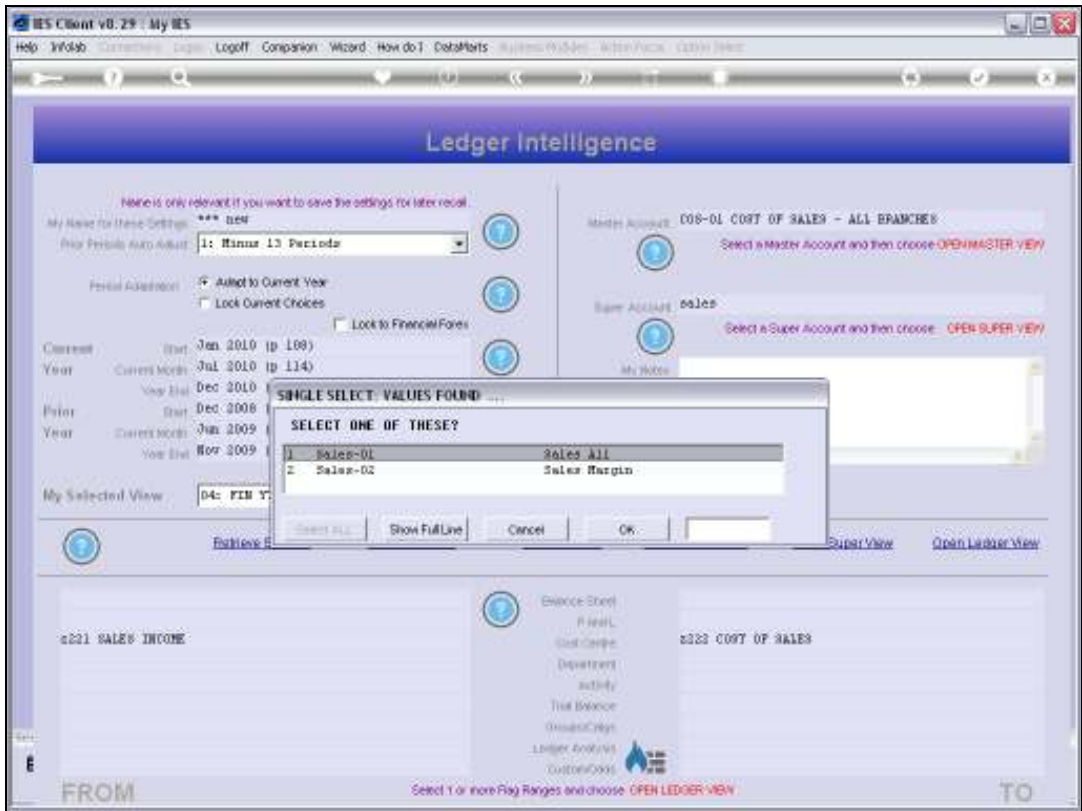
Slide 27
Slide notes:



Slide 28
Slide notes:



Slide 29
Slide notes:



Slide 30
Slide notes:

IES Client v8.29 : My IES

Help Submit Quit Functions Commands

Ledger Intelligence

Here is only relevant if you want to save the settings for later recall.

My Name for these Settings: *** NEW

My Periods Auto Adjust: 1: Manual 13 Periods

Period Adjustment: ☒ Adjust to Current Year ☐ Lock Current Choices ☐ Lock to Financial Years

Current Year	Start	Jan. 2010	tp 108
	Current Month	Jul. 2010	tp 114
	Year End	Dec. 2010	tp 119
Prior Year	Start	Dec. 2009	tp 95
	Current Month	Jun. 2009	tp 101
	Year End	Nov. 2009	tp 106

My Selected View: 04: FIN YTD and Budget

[Retrieve Settings](#)
[Delete Settings](#)
[Save Settings](#)
[Open Master View](#)
[Open Super View](#)
[Open Ledger View](#)

FROM

c021 SALES INCOME

?

- Balance Sheet
- P/L
- Cost Centre
- Department
- Activity
- Trust Balance
- Grand Total
- Ledger Analysis
- Custom Codes

TO

c022 COST OF SALES

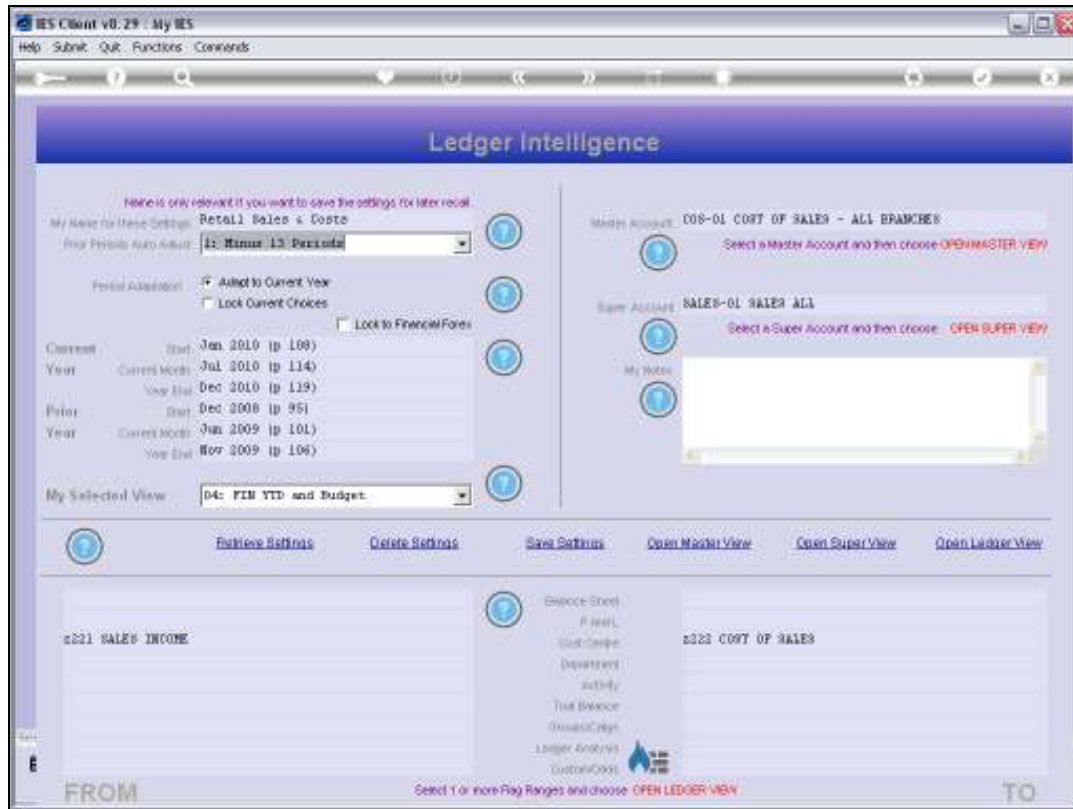
Select 1 or more Flag Ranges and choose OPEN LEDGER VIEW

Slide 31

Slide notes: Since this is a new View Set, we want to give it some appropriate Name for future recognition.

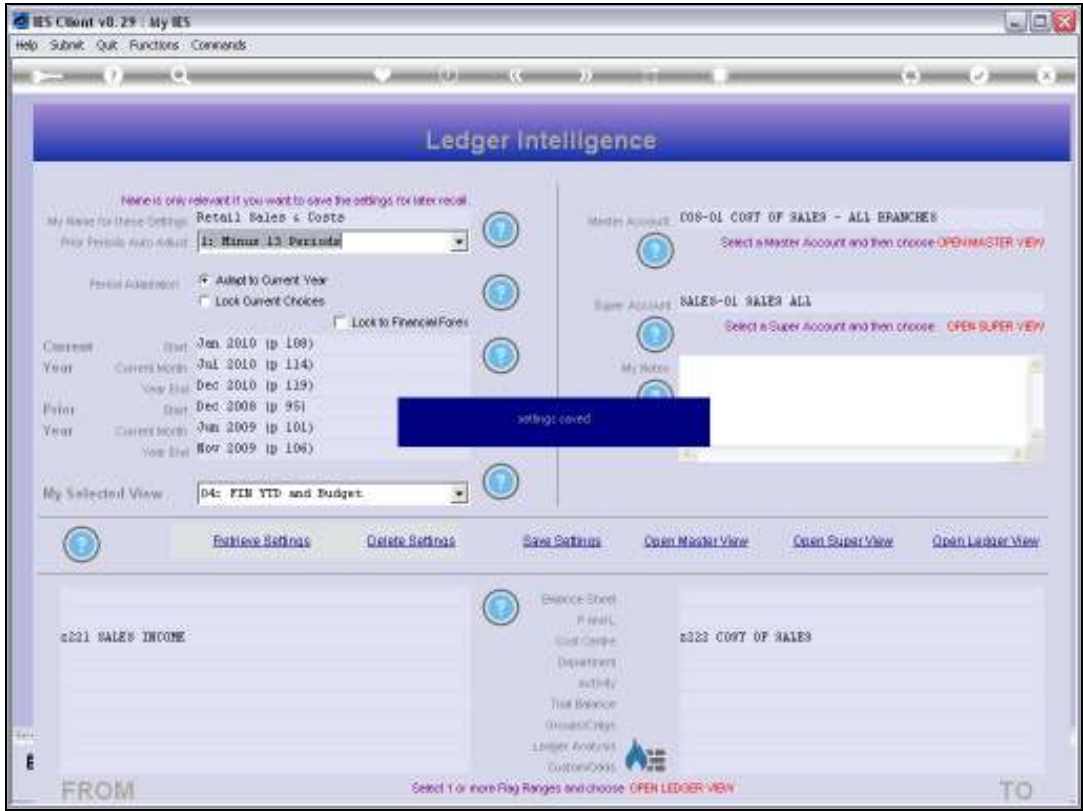


Slide 32
Slide notes:

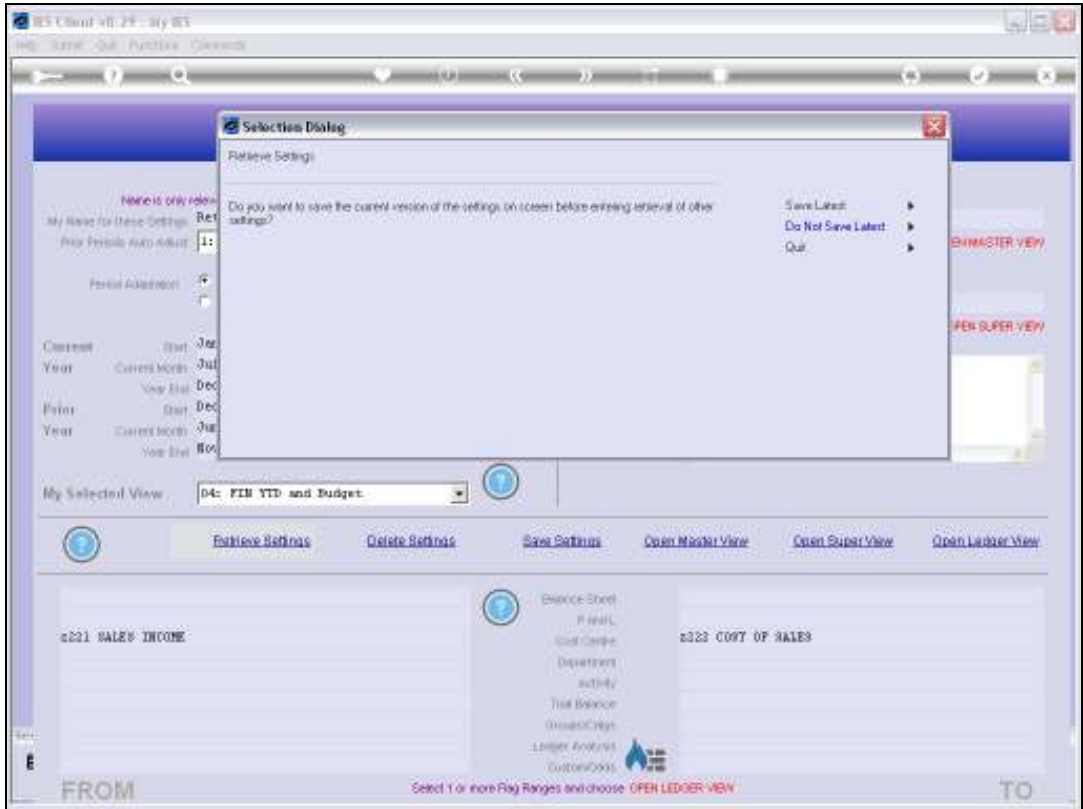


Slide 33

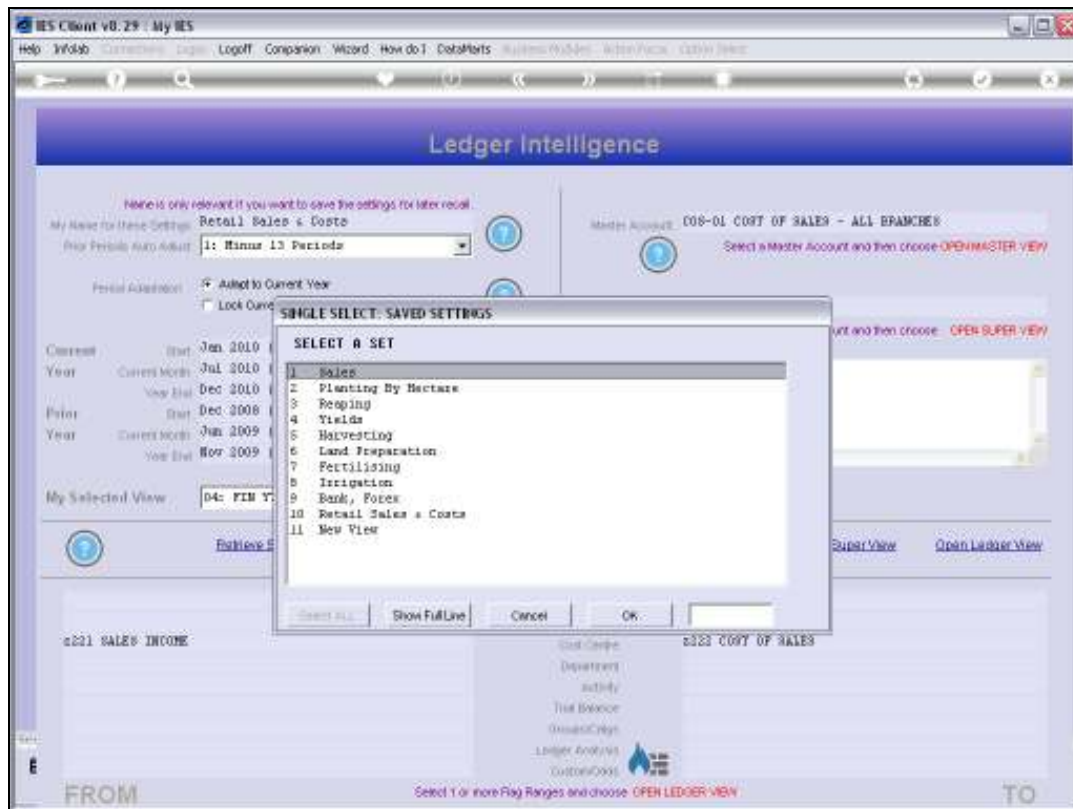
Slide notes: And then we choose 'Save Settings', which will create a entry on our list of View Sets.



Slide 34
Slide notes:

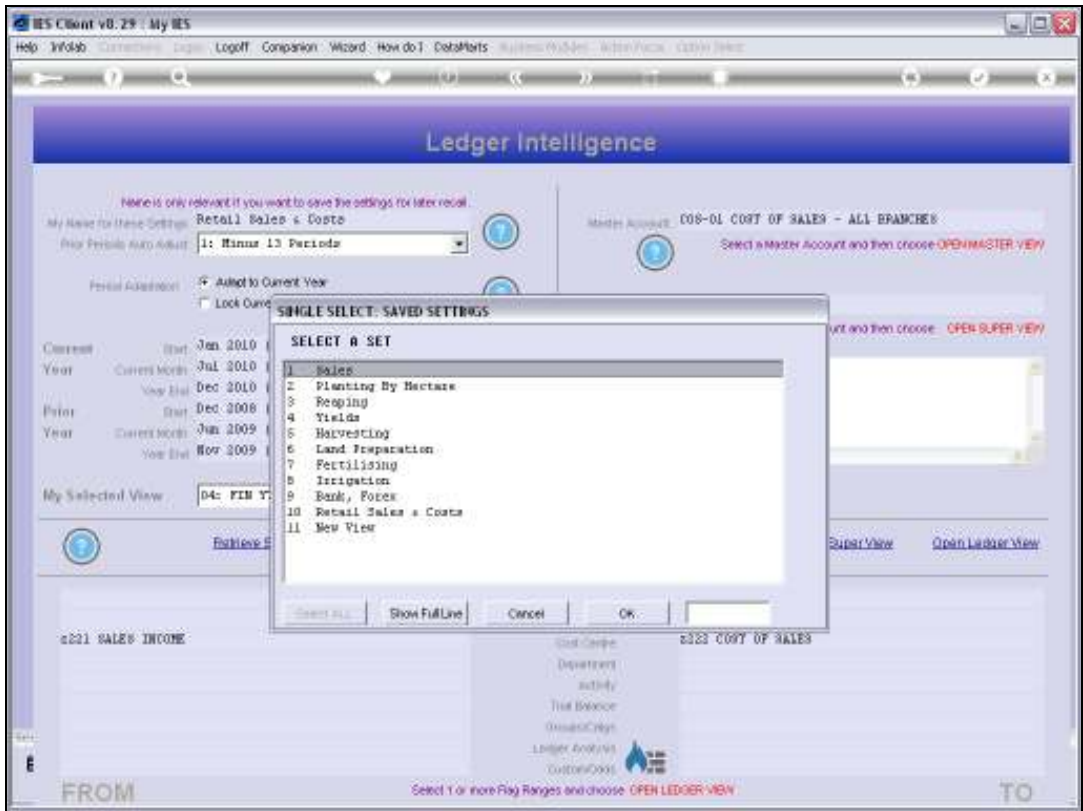


Slide 35
Slide notes:



Slide 36

Slide notes: So when we switch View Sets now, we will see our new entry on the list.



Slide 37
Slide notes:



Slide 38
Slide notes:

IES Client v8.29 : My IES

Help Submit Quit Functions Commands

Ledger Intelligence

Here is only relevant if you want to save the settings for later recall.

My View for these Settings: Retail Sales & Costs

My Periods Auto Adjust: 1: Manual 13 Periods

Period Adjustment: ☒ Adapt to Current Year ☐ Lock Current Choices ☐ Lock to Financial Forecs

Current Year: Start Jan. 2010 (p. 108) Current Month: Jul. 2010 (p. 114) Year End: Dec. 2010 (p. 119)

Prior Year: Start Dec. 2009 (p. 95) Current Month: Jun. 2009 (p. 101) Year End: Nov. 2009 (p. 106)

My Selected View: D4: FIN YTD and Budget

Master Account: 008-01 COST OF SALES - ALL BRANCHES
Select a Master Account and then choose **OPEN MASTER VIEW**

Super Account: SALES-01 SALES ALL
Select a Super Account and then choose **OPEN SUPER VIEW**

My Notes:

Retrieve Settings Delete Settings Save Settings Open Master View Open Super View Open Ledger View

FROM TO

Select Y or non-Frag Ranges and choose **OPEN LEDGER VIEW**

Slide 39

Slide notes: A View Set may be temporary for the duration of the current Session only, or it may be SAVED as a View Set on our User List of View Sets, for re-use. Whichever way, we construct and use View Sets to find answers to the questions that we wish to put to the BI system.