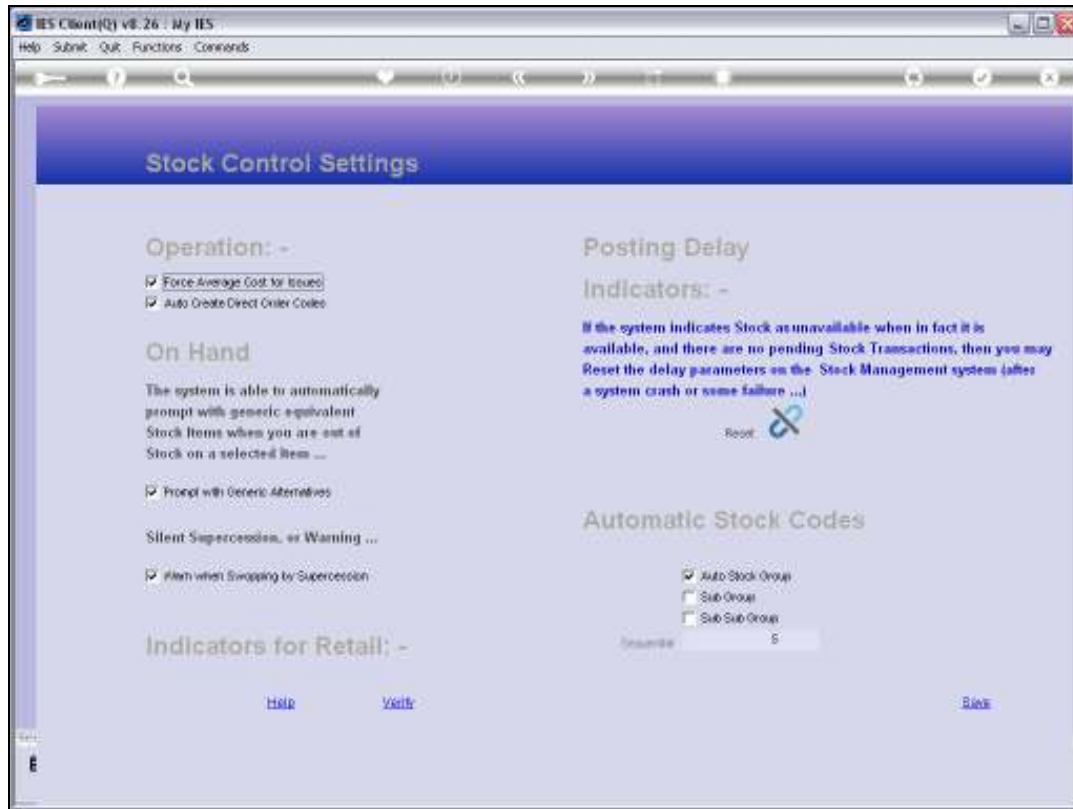




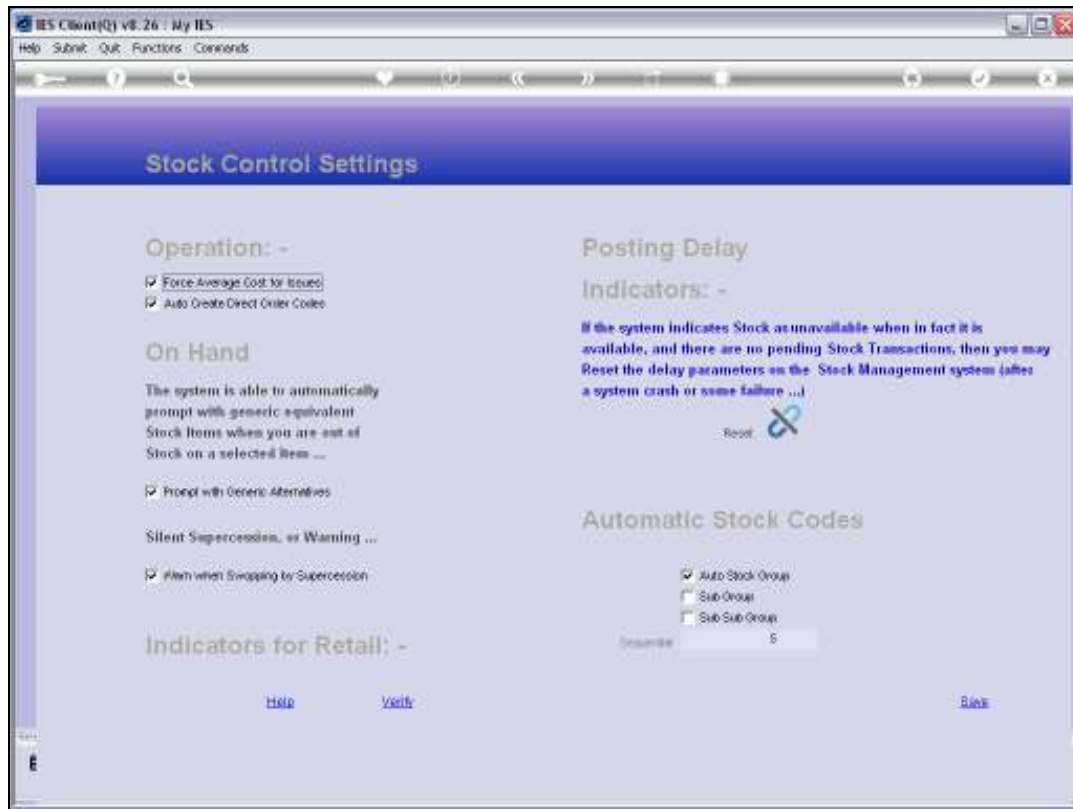
Slide 1

Slide notes: In this tutorial we will consider the Stock Control Settings. This does not concern the average User, and is only of interest to the Administrator of the system.



Slide 2

Slide notes: When internal Issues are used in the Company, and based on Average Costing, then it is recommended but not mandatory to check the 'Average Cost for Issues'. This will avoid Cost of Sales mistakes when indicators are inappropriately set on the Stock Master, as can commonly happen when Users edit the Stock Master and indicate 'Last Invoice Price' or 'Fixed Price' instead of 'Average Costing' by mistake.

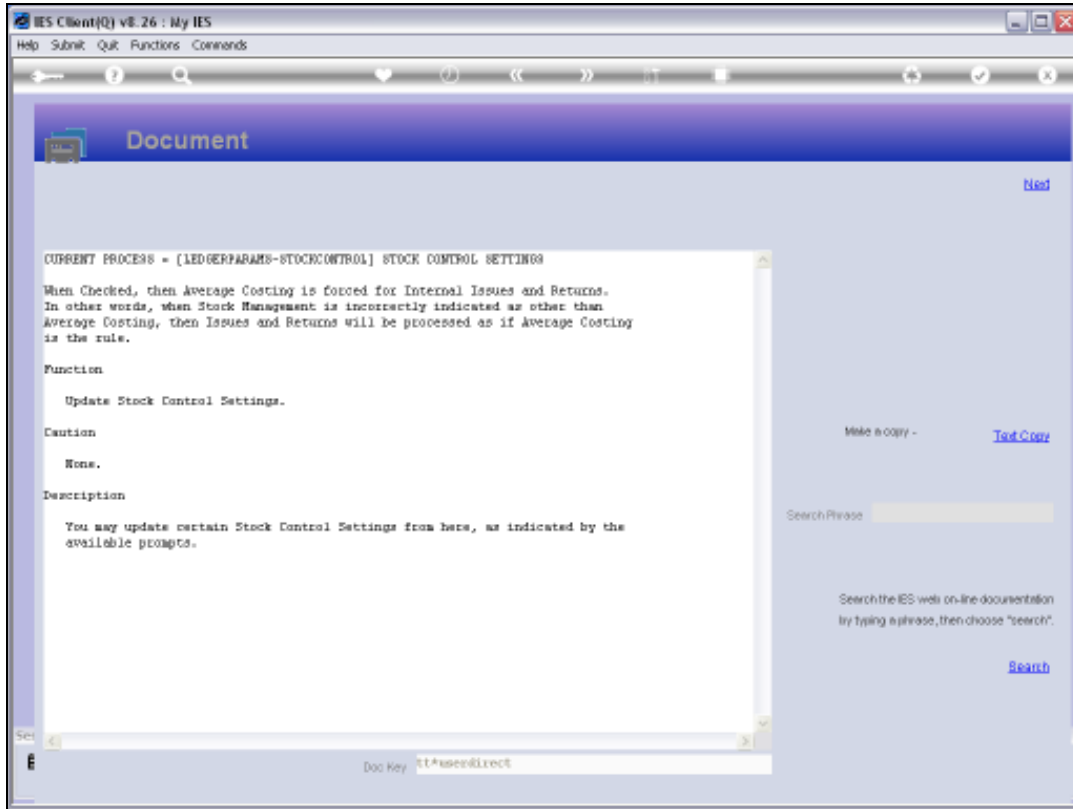


Slide 3

Slide notes: When Cost of Sales are calculated on Internal Issues on any method other than Average Costing, then this will result in balances that accumulate in the Cost of Sales Accounts. For many companies, this is an undesirable result and it requires multiple Journals to correct such mistakes. Therefore, if we want to ensure that Average Costing will be used for all Internal Issues, then we check this option.



Slide 4
Slide notes:



Slide 5

Slide notes: Here is an explanation on the matter.



Slide 6
Slide notes:



Slide 7
Slide notes:



Slide 8

Slide notes: The 'Auto Create' item is checked when we wish the system to automatically create Direct Order codes when new Stock Items are opened. This is useful only where there is a common practice to order Stock as Direct Items instead of 'as Stock Items', as some people do. In this case, any Stock Item can be ordered on a Purchase Order as a Direct Item, and there will still be Order History for the Stock Item.



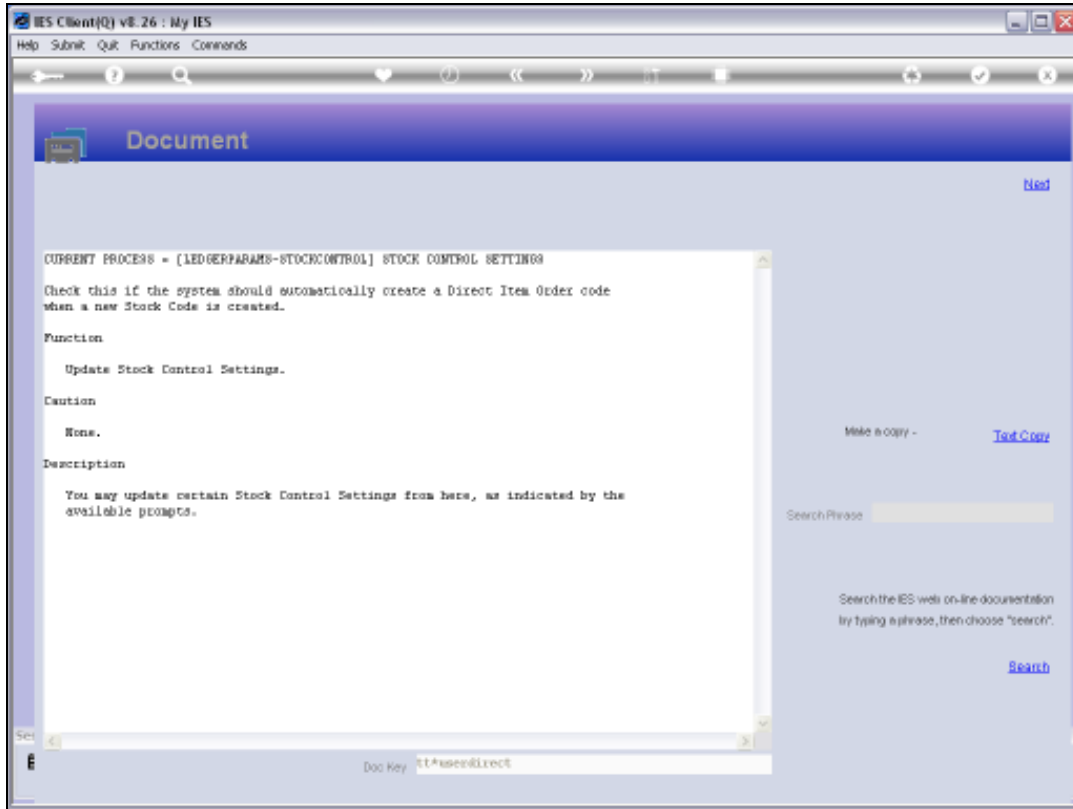
Slide 9
Slide notes:



Slide 10
Slide notes:



Slide 11
Slide notes:



Slide 12
Slide notes:



Slide 13
Slide notes:



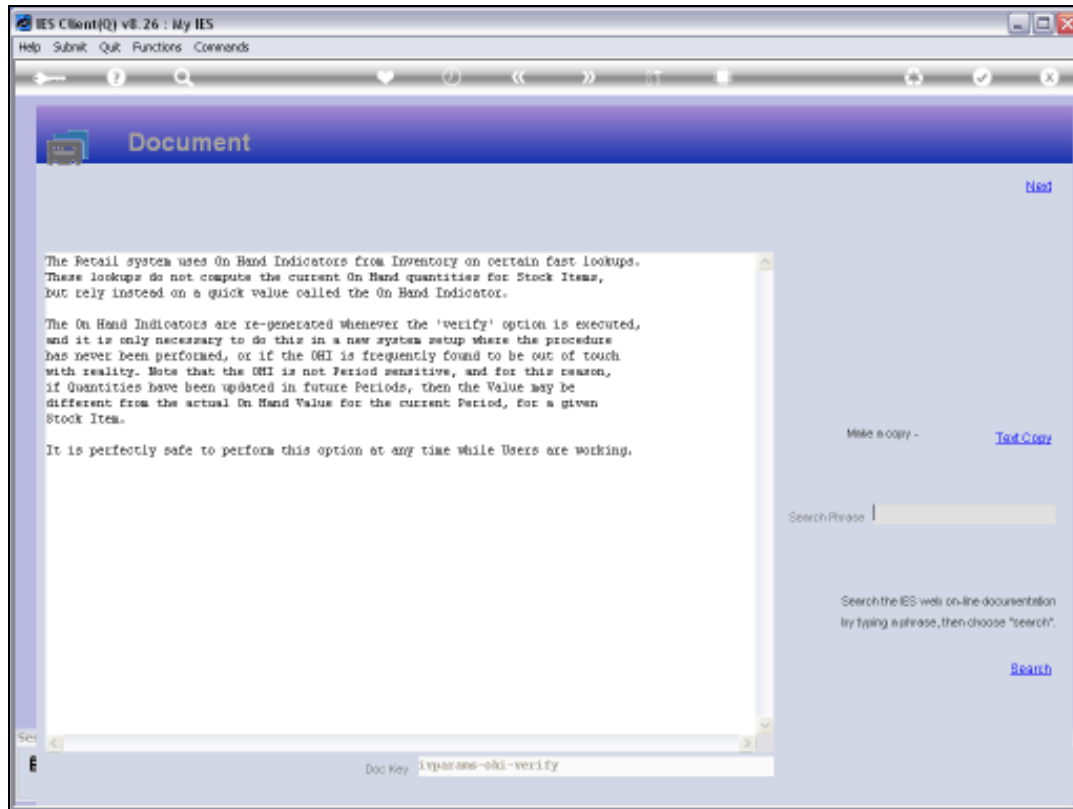
Slide 14

Slide notes: 'Generic Alternatives' should be checked when we want the system to prompt the User with generic alternatives if a sought Item is out of Stock. Supersession is automatic when specified on a Stock Item master, but if we wish the User to be warned about it when it happens, then we check the 'warn' field.

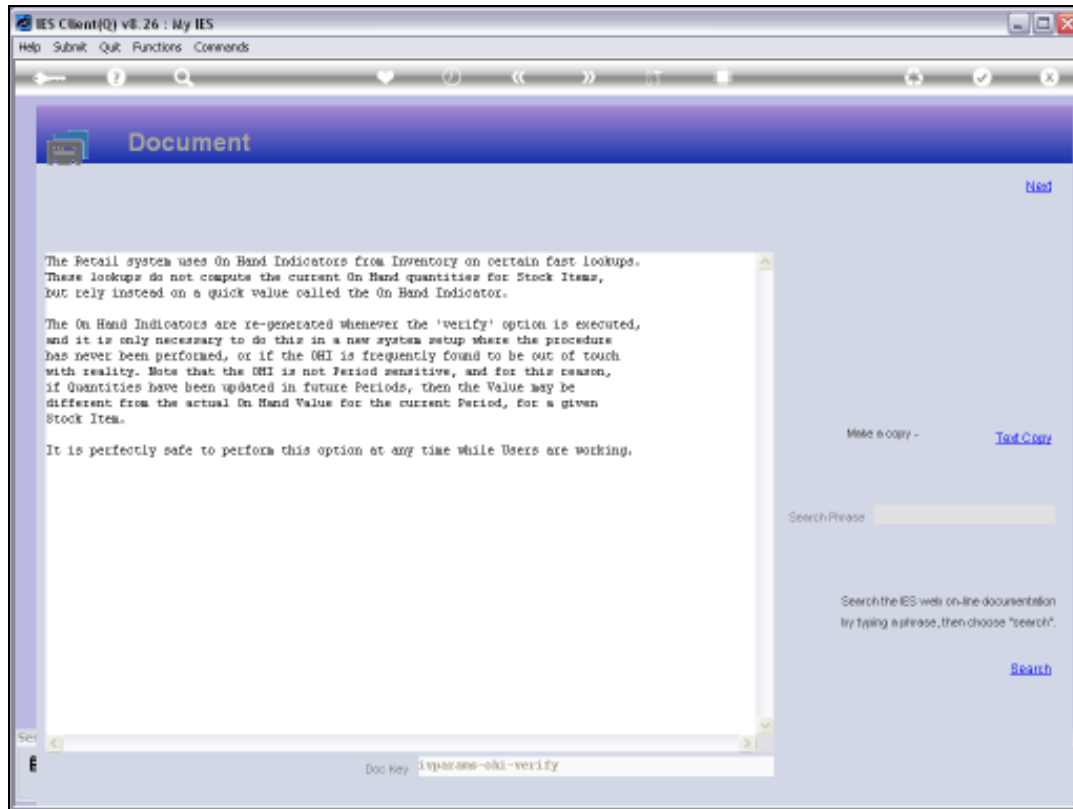


Slide 15

Slide notes: On Hand Indicators for Retail are used for fast lookups during Retail Sales, but these indicators do not always get the absolute latest information from the Stock system. The Retail Indicators are explained in the Help document.



Slide 16
Slide notes:



Slide 17
Slide notes:



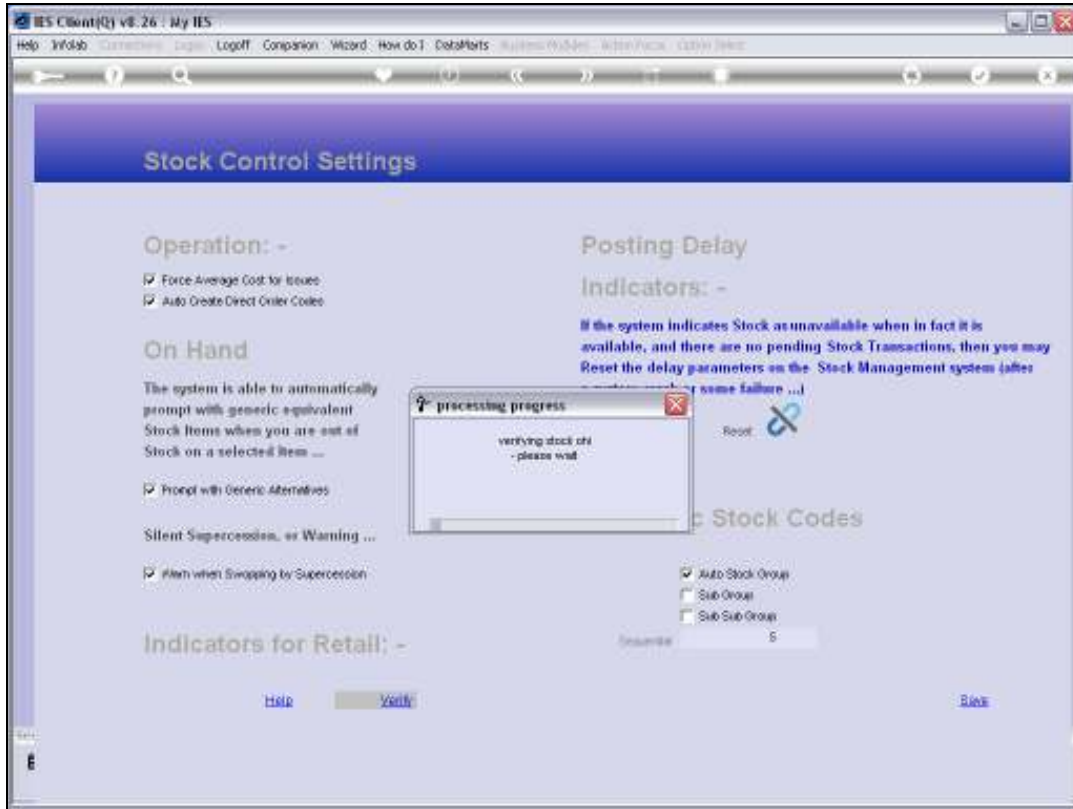
Slide 18

Slide notes:



Slide 19

Slide notes: And verification can safely be used at any stage, if required.



Slide 20
Slide notes:



Slide 21
Slide notes:

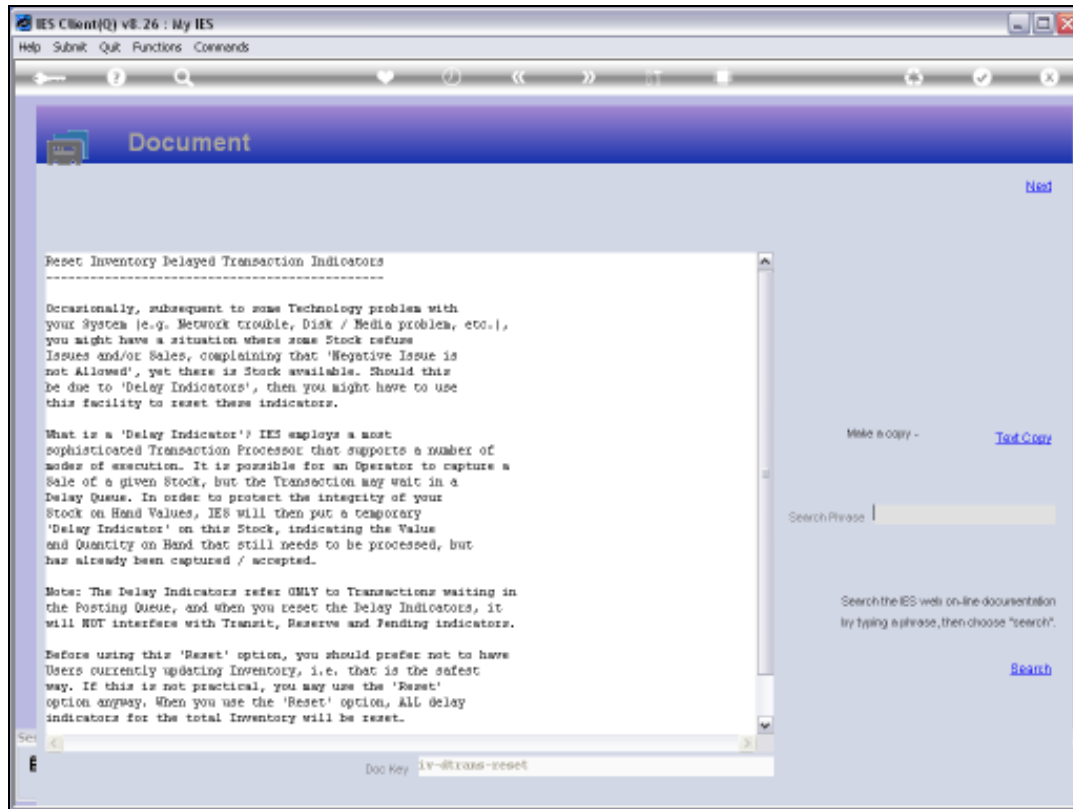


Slide 22
Slide notes:



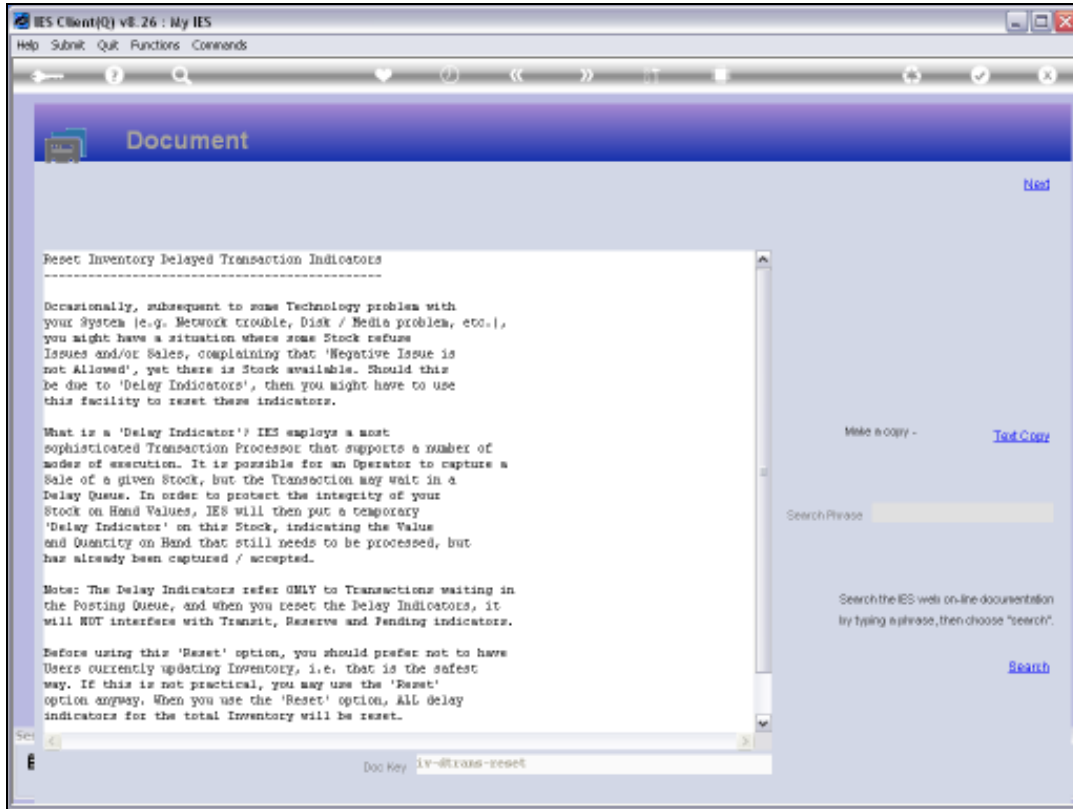
Slide 23

Slide notes: The Posting Delay Indicators are a system instrument that usually requires no intervention at all, except possibly in the case of some system crash or other.

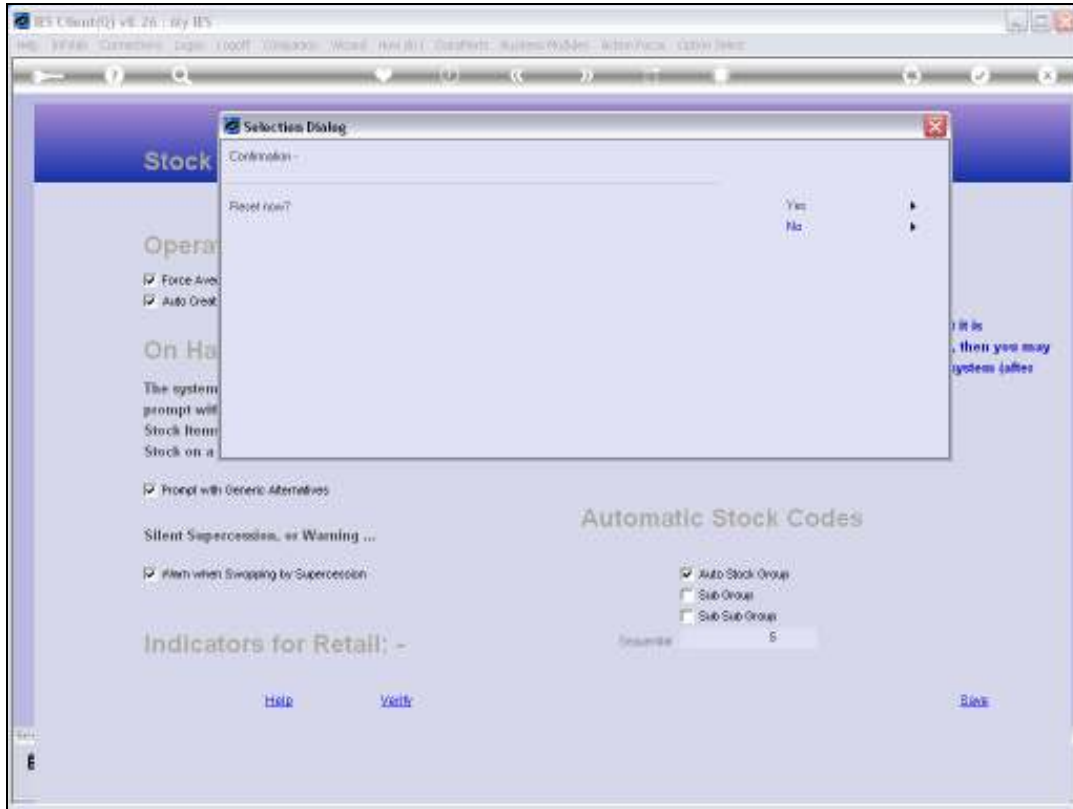


Slide 24

Slide notes: Here it is explained in the Help.

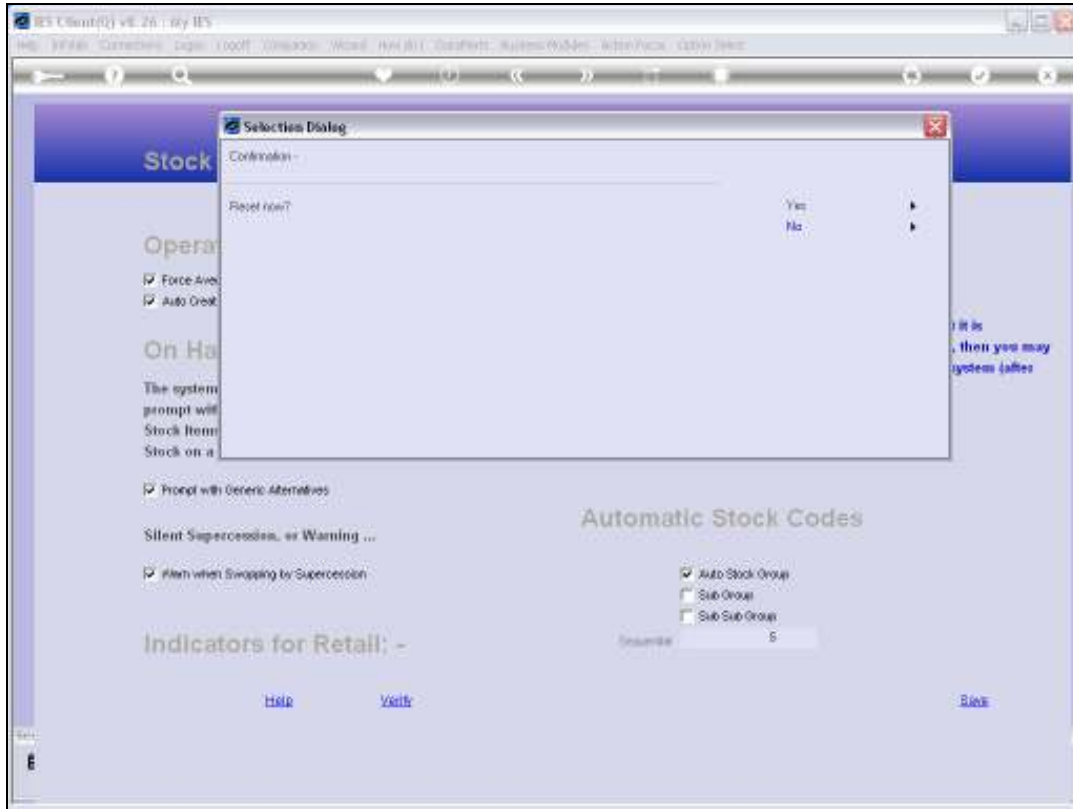


Slide 25
Slide notes:



Slide 26

Slide notes:

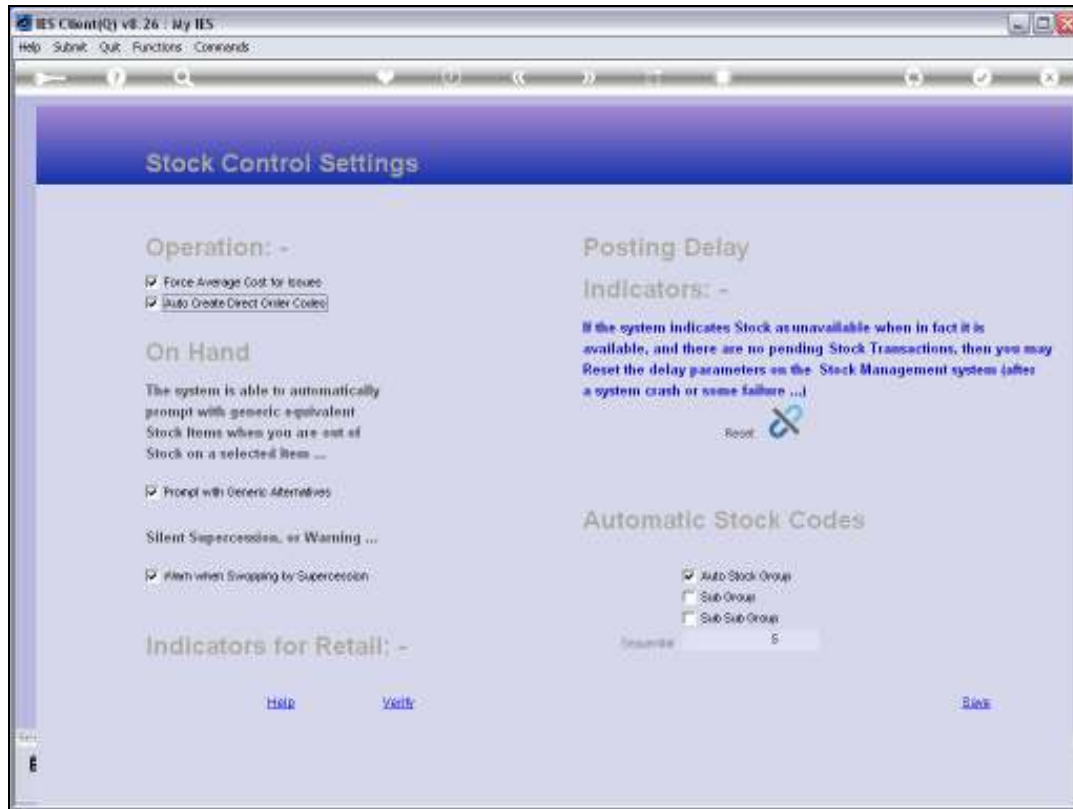


Slide 27

Slide notes:



Slide 28
Slide notes:



Slide 29

Slide notes: We can also influence how Stock Codes will be constructed when we use the auto Stock Codes for new Items, and the help will explain this clearly.



Slide 30
Slide notes:



Slide 31
Slide notes:



Slide 32

Slide notes:



Slide 33

Slide notes: