

In a just installed, brand new set up, there is a pre-setup User that we will use to logon at first.

The user code = "dm" and the password = "password".

Once we are using the system, we can use the IES options to make more User Codes and Access Profiles, and then we will change the password for the "dm" User Code to something local and secret.

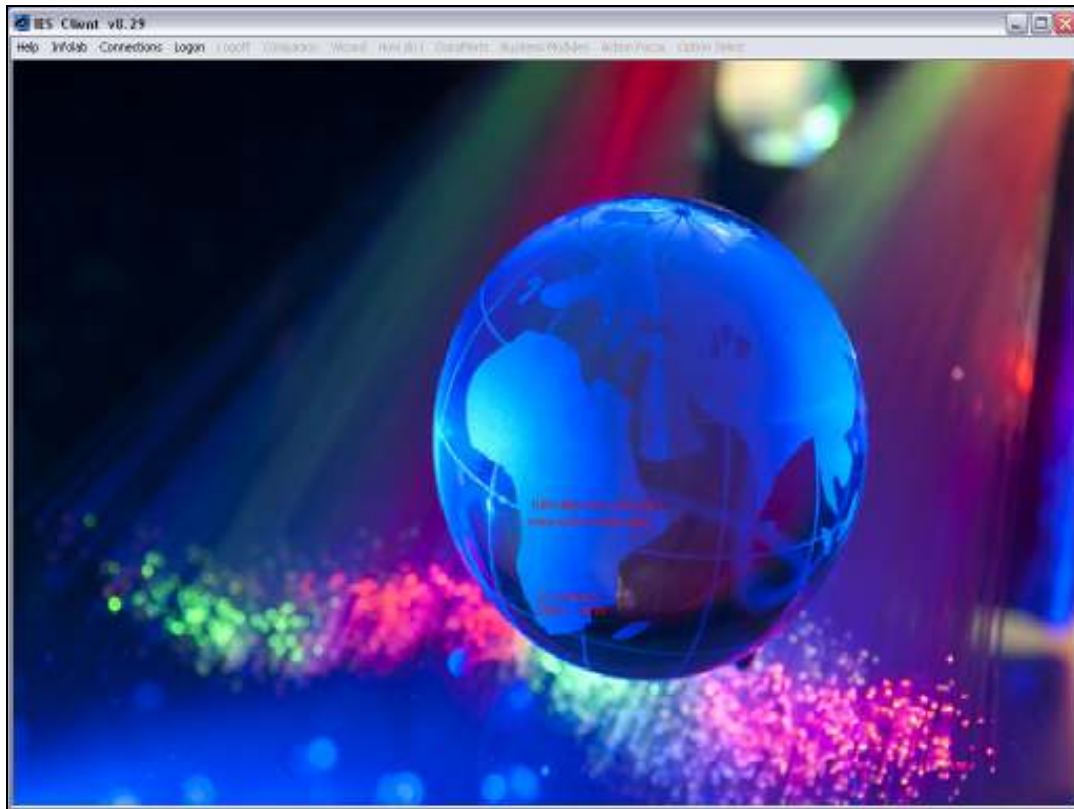
infolab

### Slide 3

Slide notes: After performing installation of the database and the IES software, and to start using the system, we have to do so by using a pre-setup User that is automatically present after the installation of the system, and this User Code is "dm".

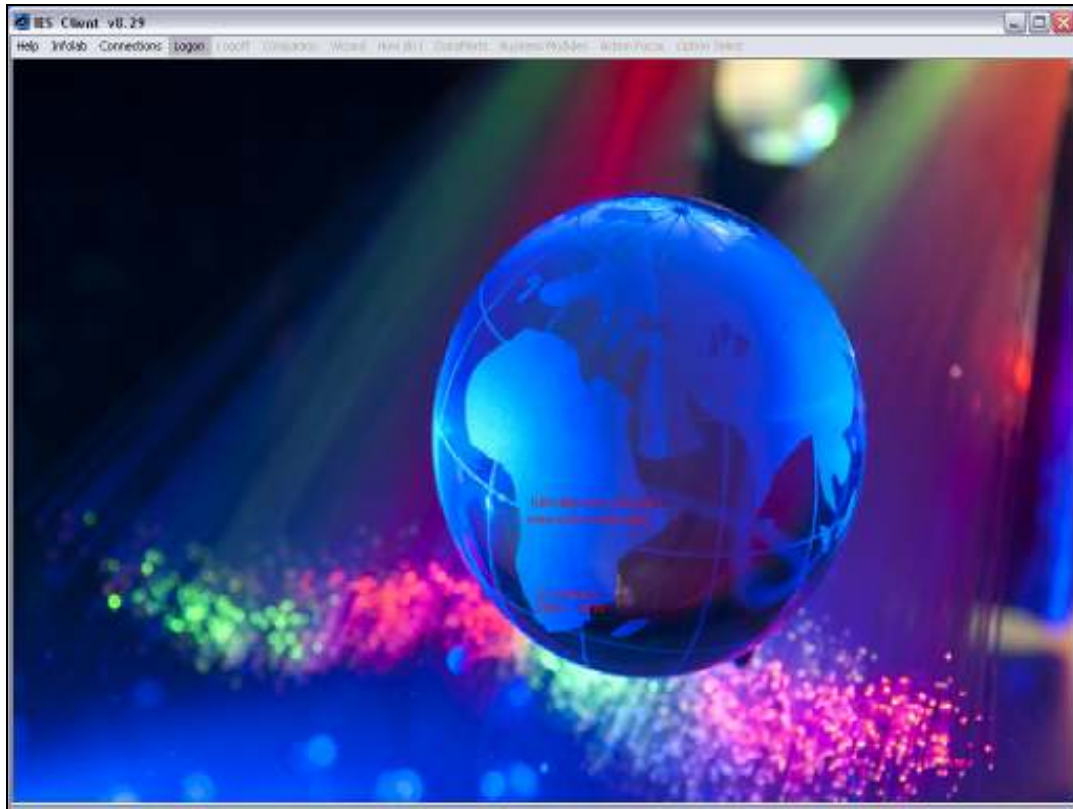
The password is "password" in lower case. This is how we get into the system, and later, after using the system and being comfortable, we will create other User Codes, using the IES menus to do so, and Access Profiles for the new User Codes.

Then, we will change the password for the User "dm" to something local and secret, in order to protect our system from illegal entry.



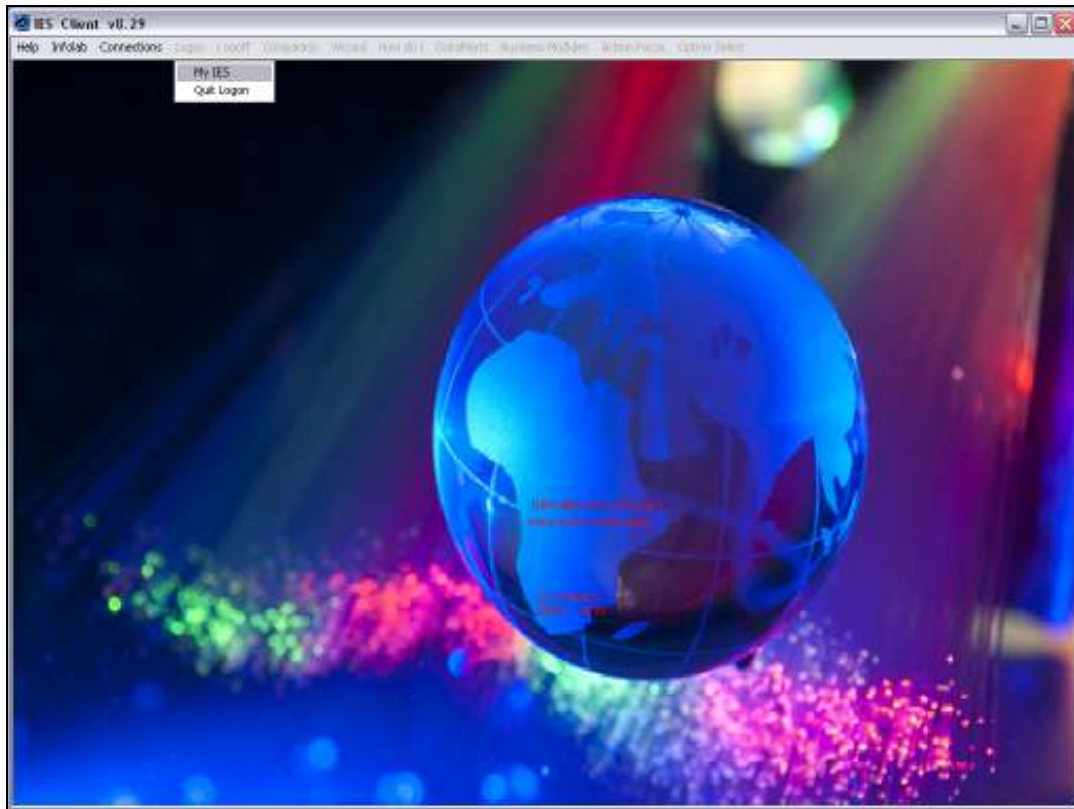
Slide 2

Slide notes:



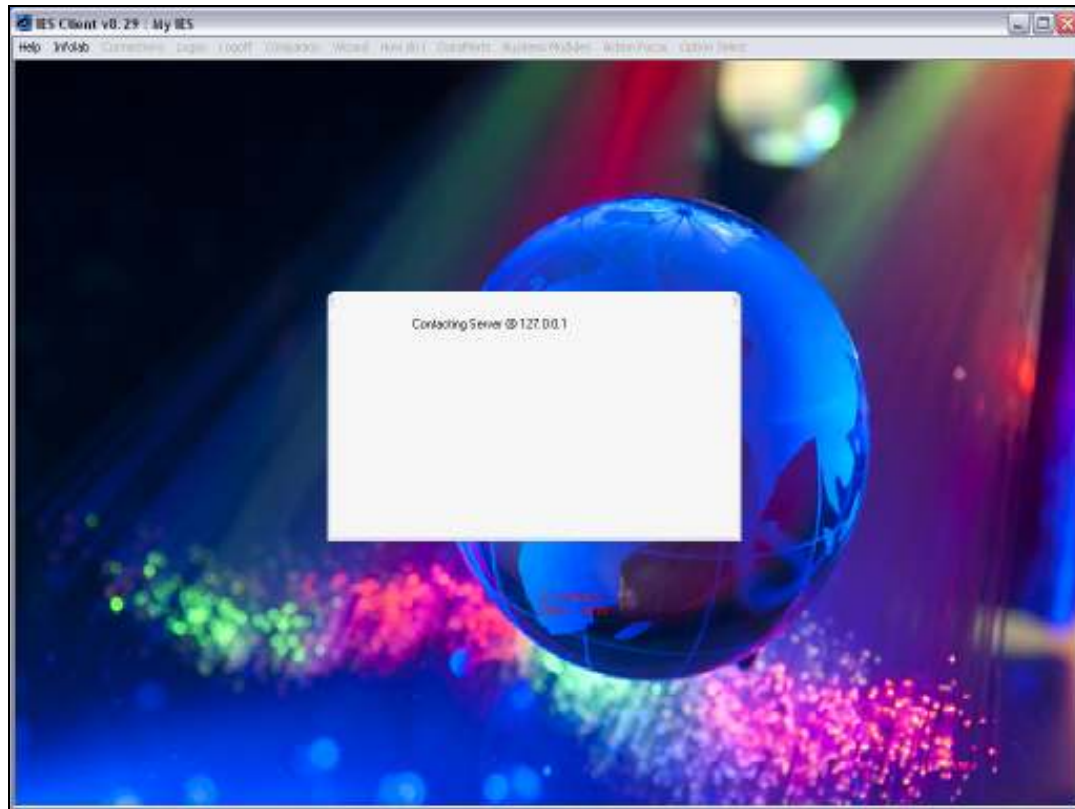
Slide 3

Slide notes:



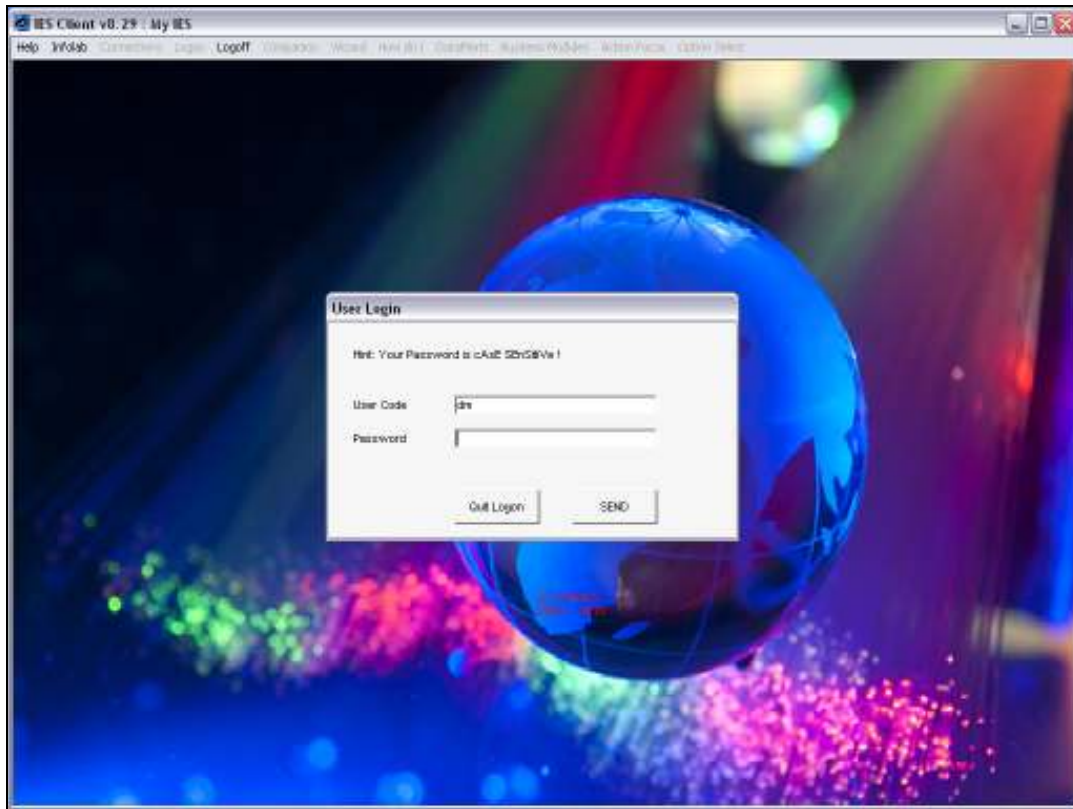
Slide 4

Slide notes:



Slide 5

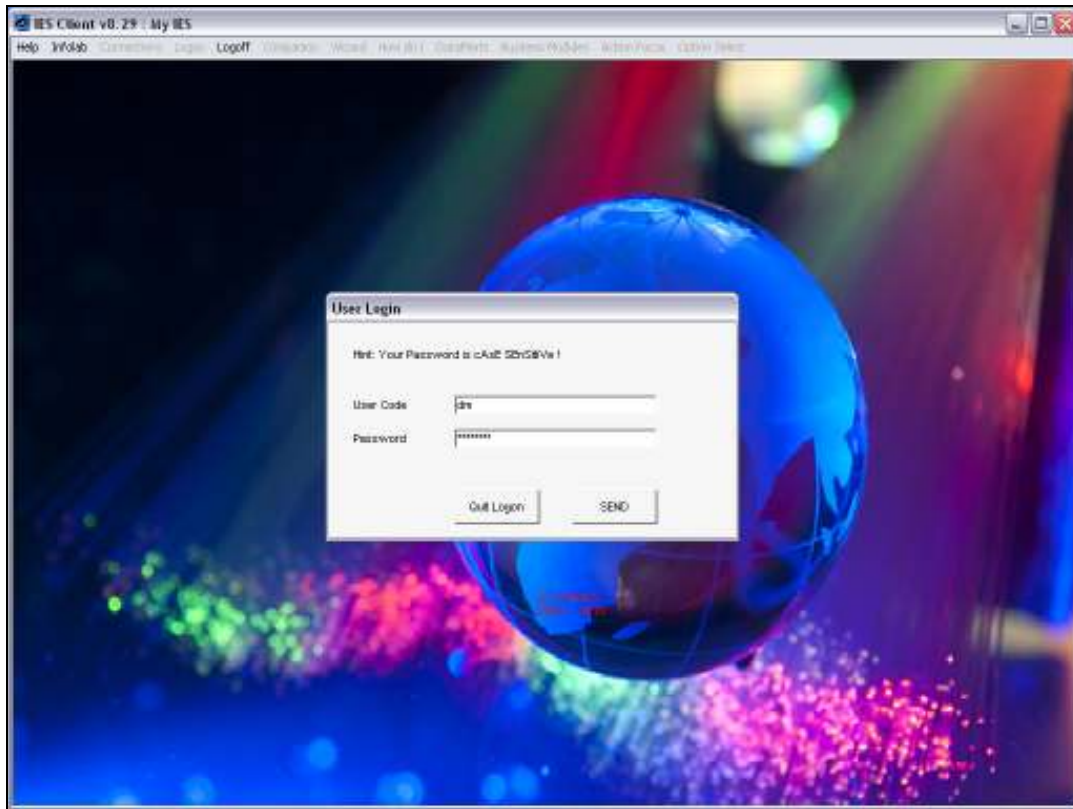
Slide notes:



Slide 6

Slide notes:





Slide 7

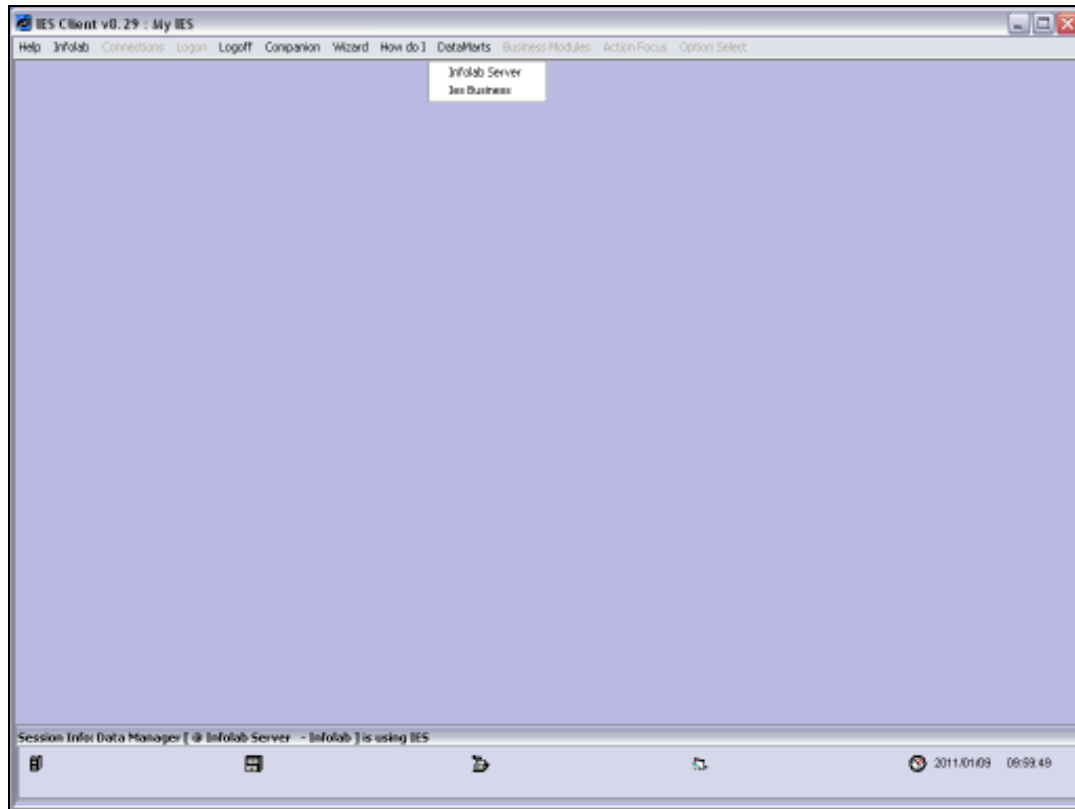
Slide notes:



Slide 8

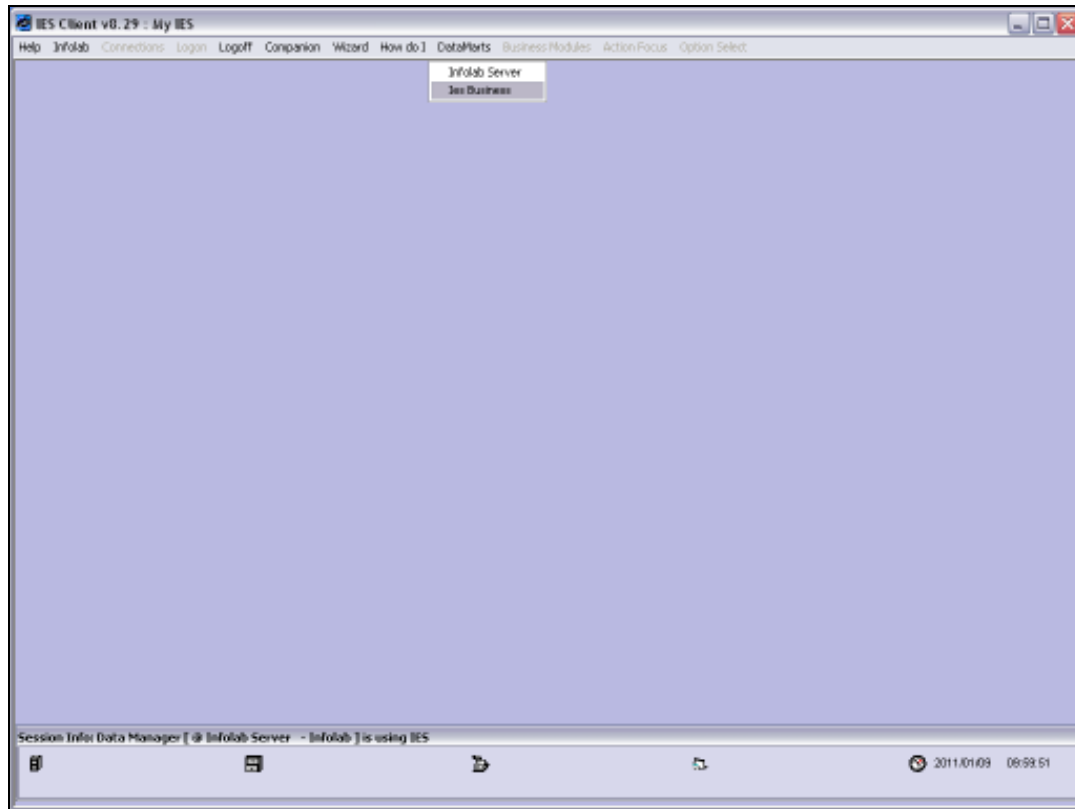
Slide notes:





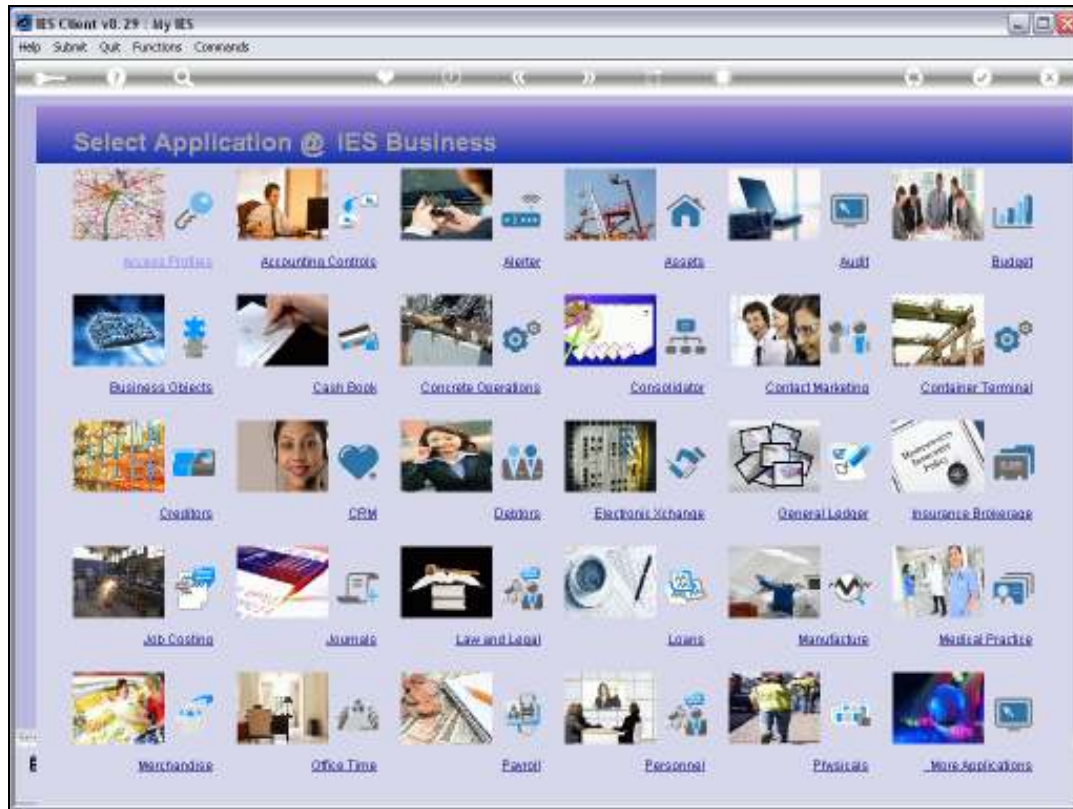
Slide 9

Slide notes:



Slide 10

Slide notes:



Slide 11

Slide notes: