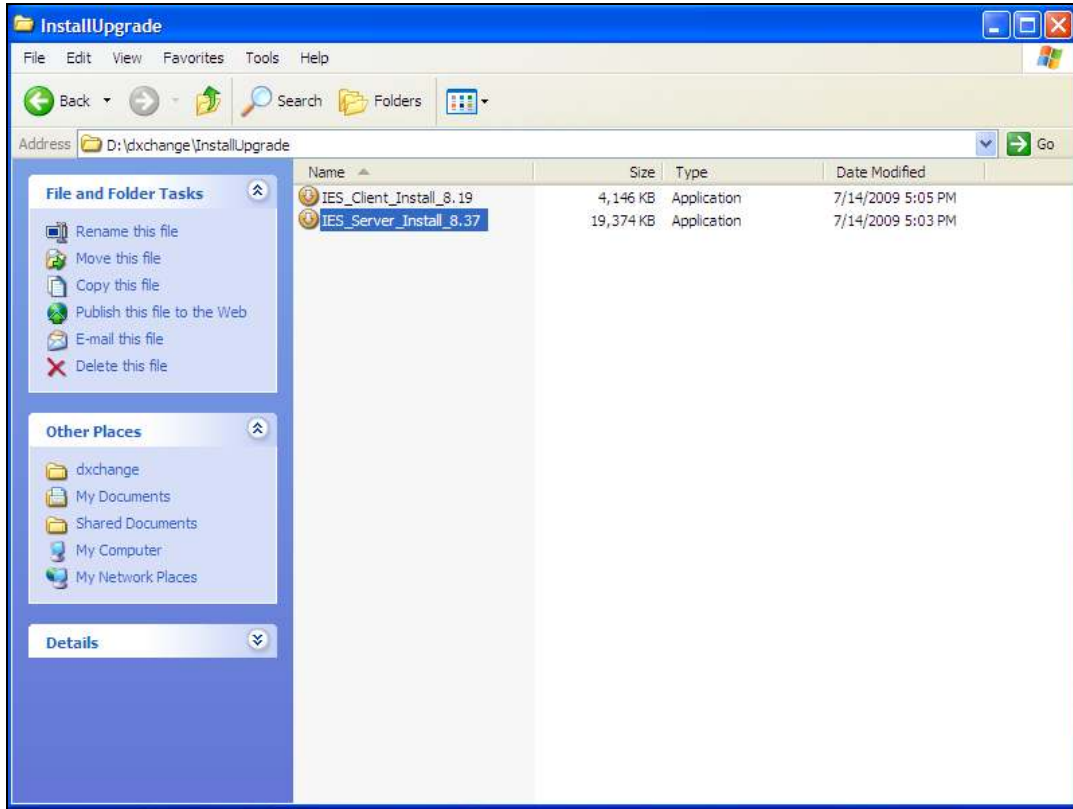
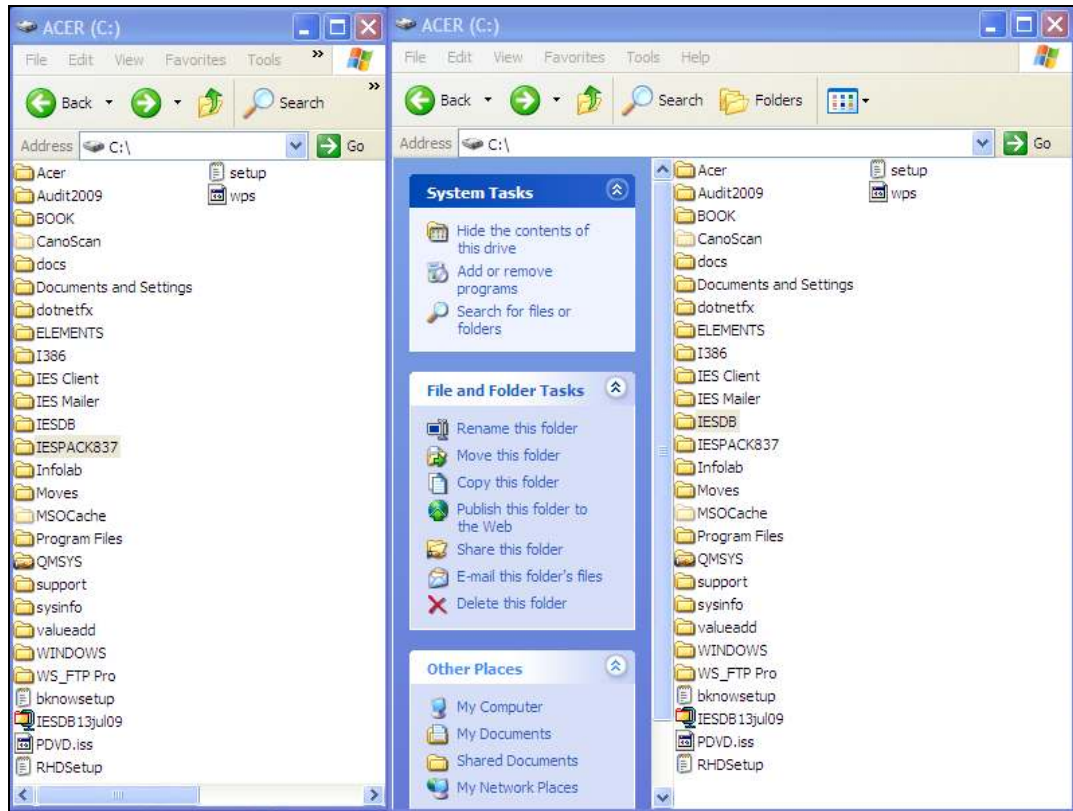


## Slide 1

Slide notes: In this tutorial we show how to install a new Business Datamart in the Database. From the installation or upgrade IES Pack last downloaded, we may have such a Business Datamart available, and we can use that, or else we can simply install the IES Server Pack again, and this process will create an instance of a Business Datamart for us.

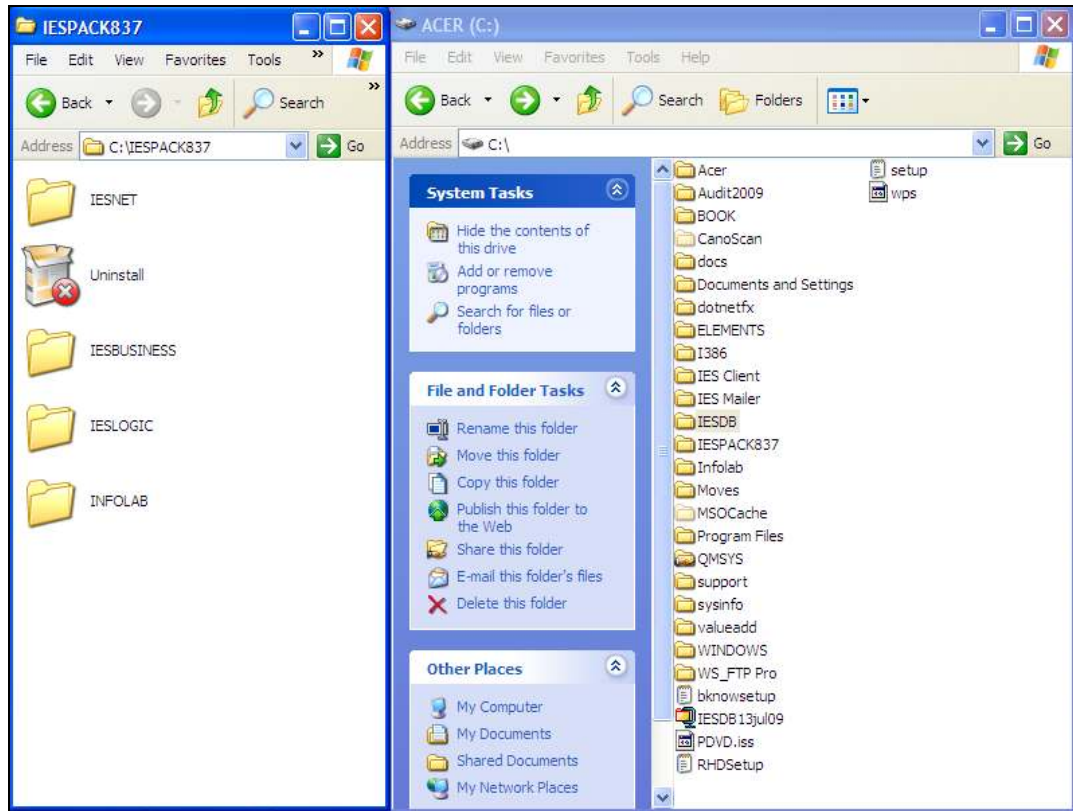


Slide 2  
Slide notes:



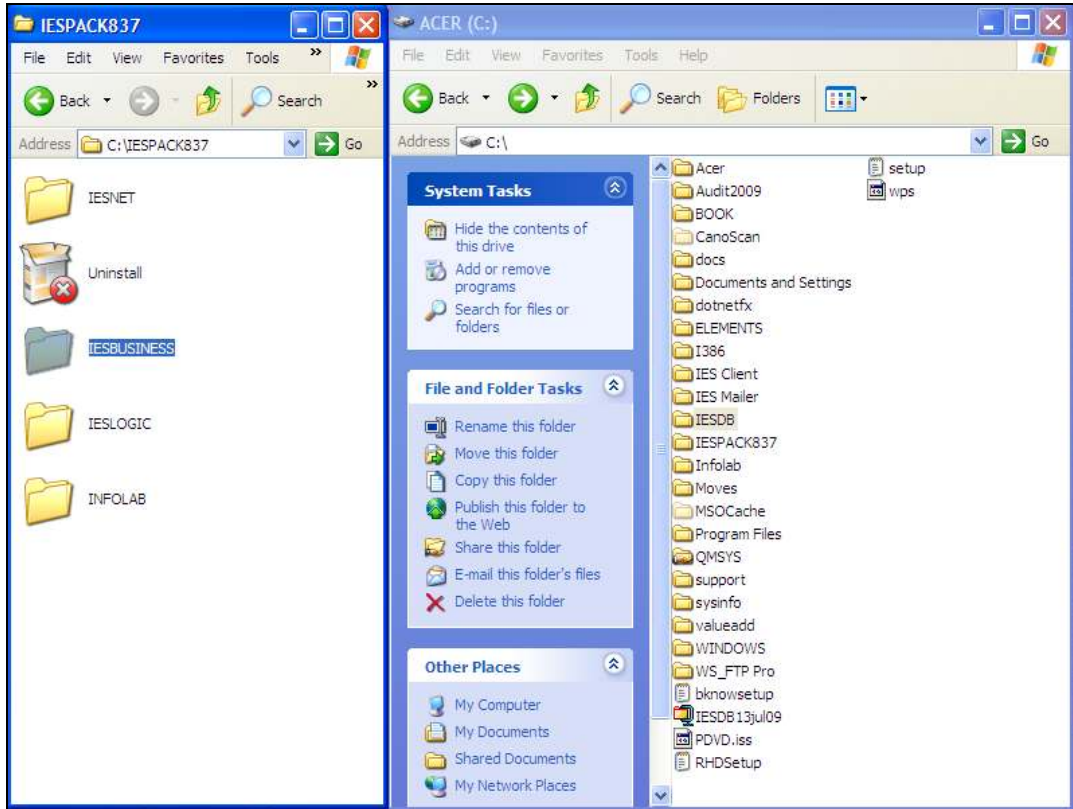
### Slide 3

Slide notes: In the last IESPACK or as just installed, we find some Datamarts, among which is a Business Datamart that we can use for a new Business Datamart in our database.

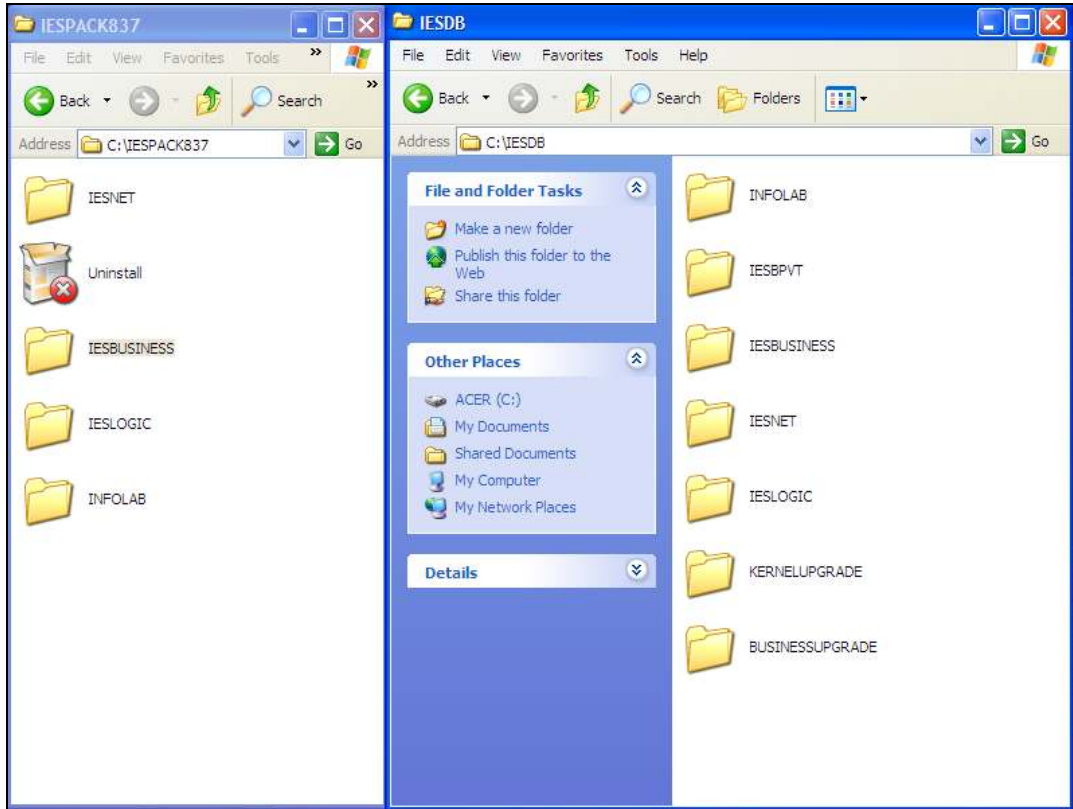


#### Slide 4

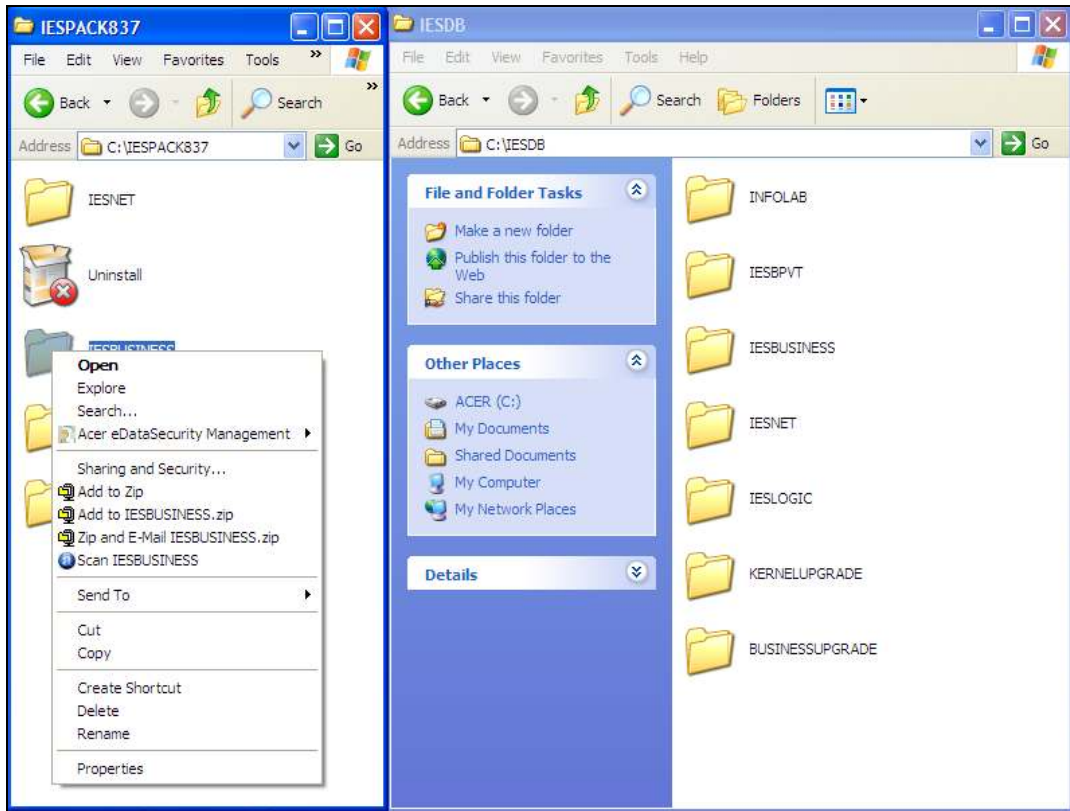
Slide notes: We just rename the Business Datamart to the correct Key or Name as issued when we registered the new Business Datamart in IES. This is always IESBUSINESS 2 or 3 or 4 or whatever the next available number is.



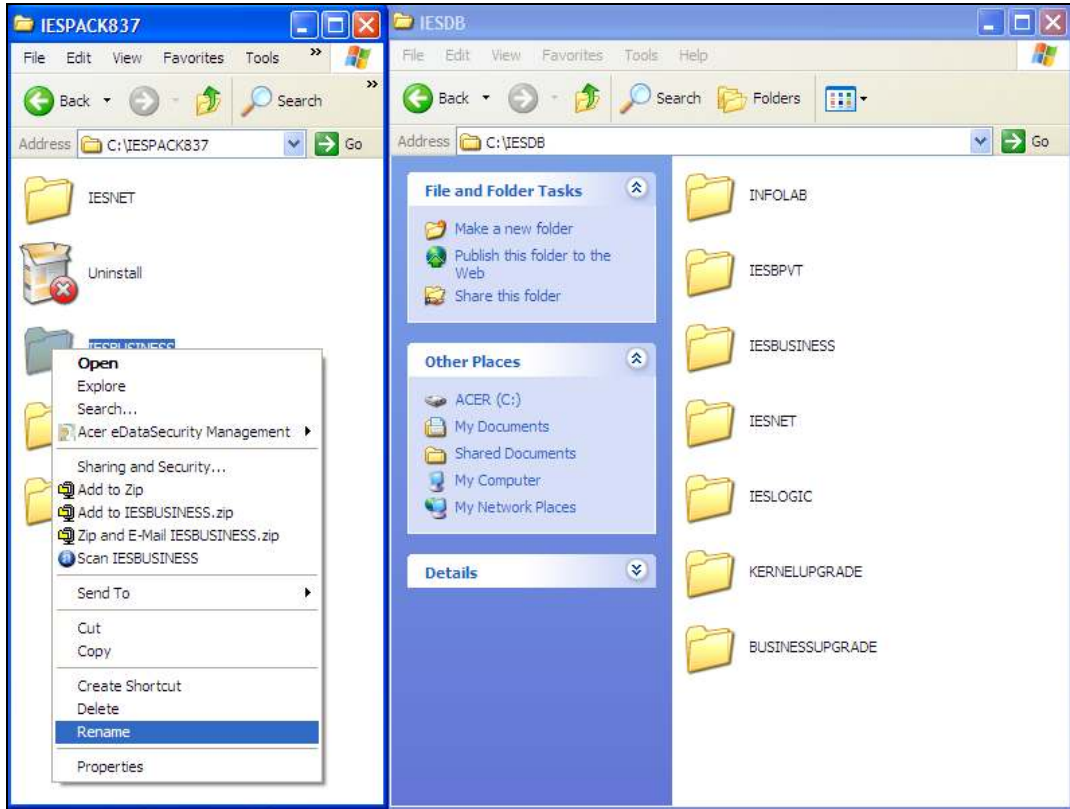
Slide 5  
Slide notes:



Slide 6  
Slide notes:

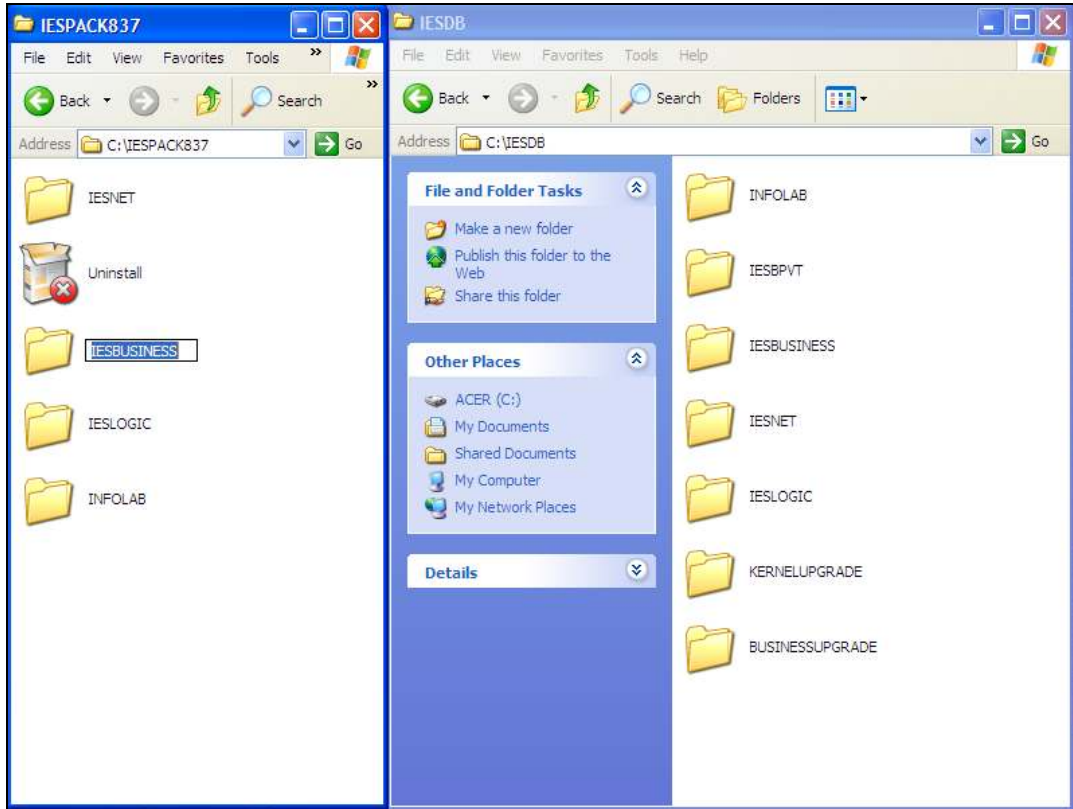


Slide 7  
Slide notes:

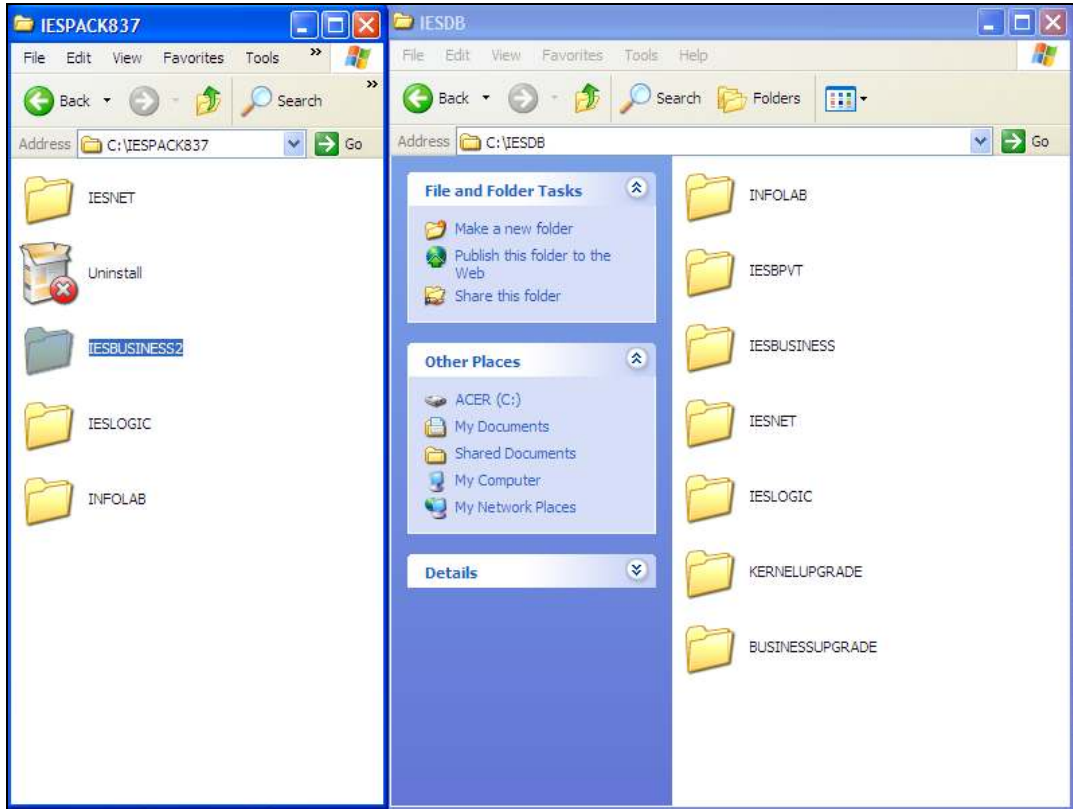


Slide 8  
Slide notes:



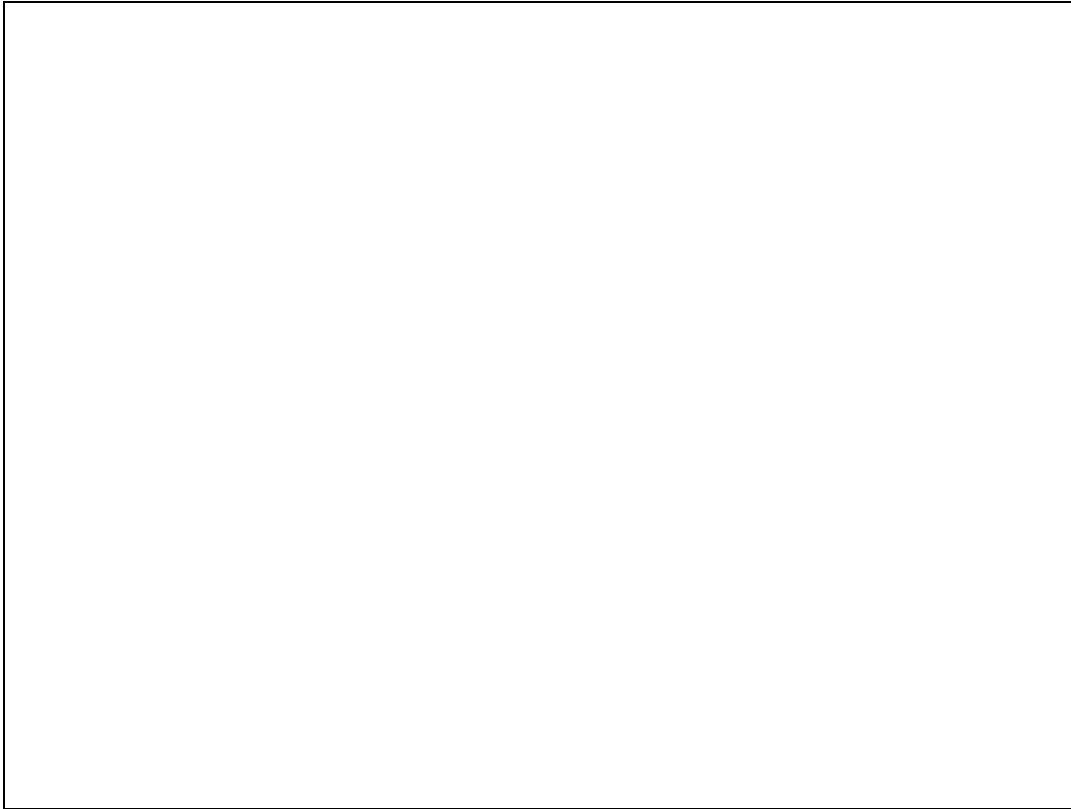


Slide 9  
Slide notes:



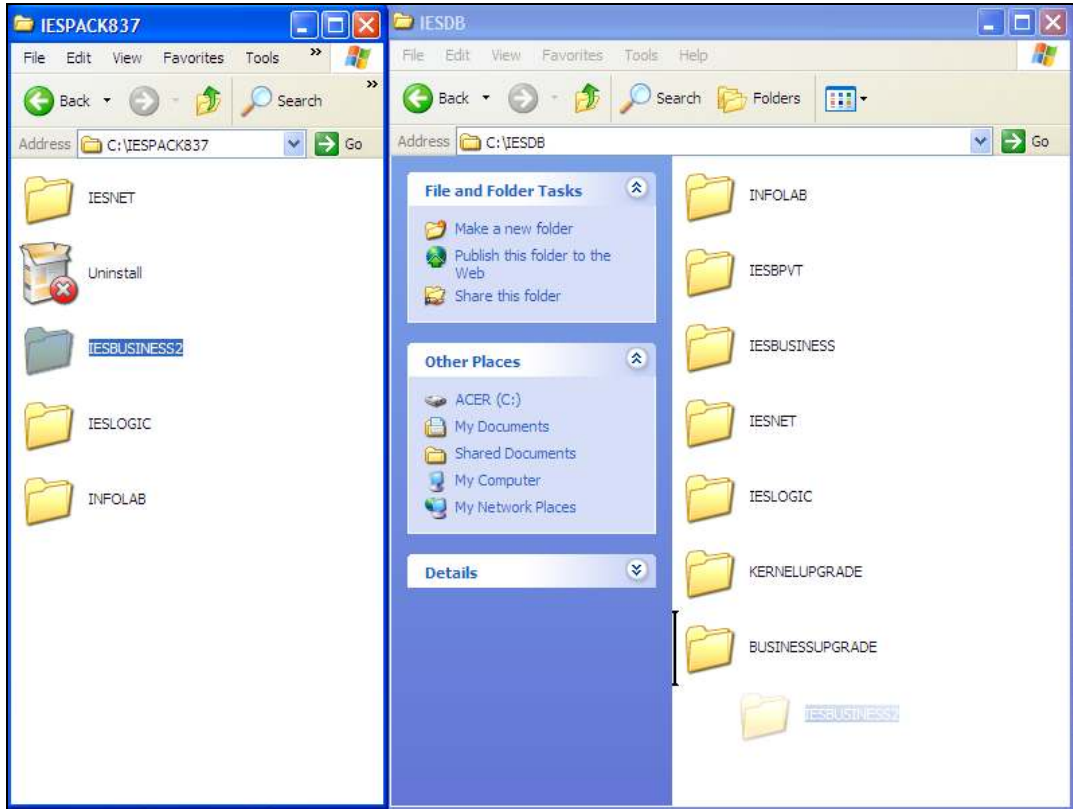
Slide 10

Slide notes:



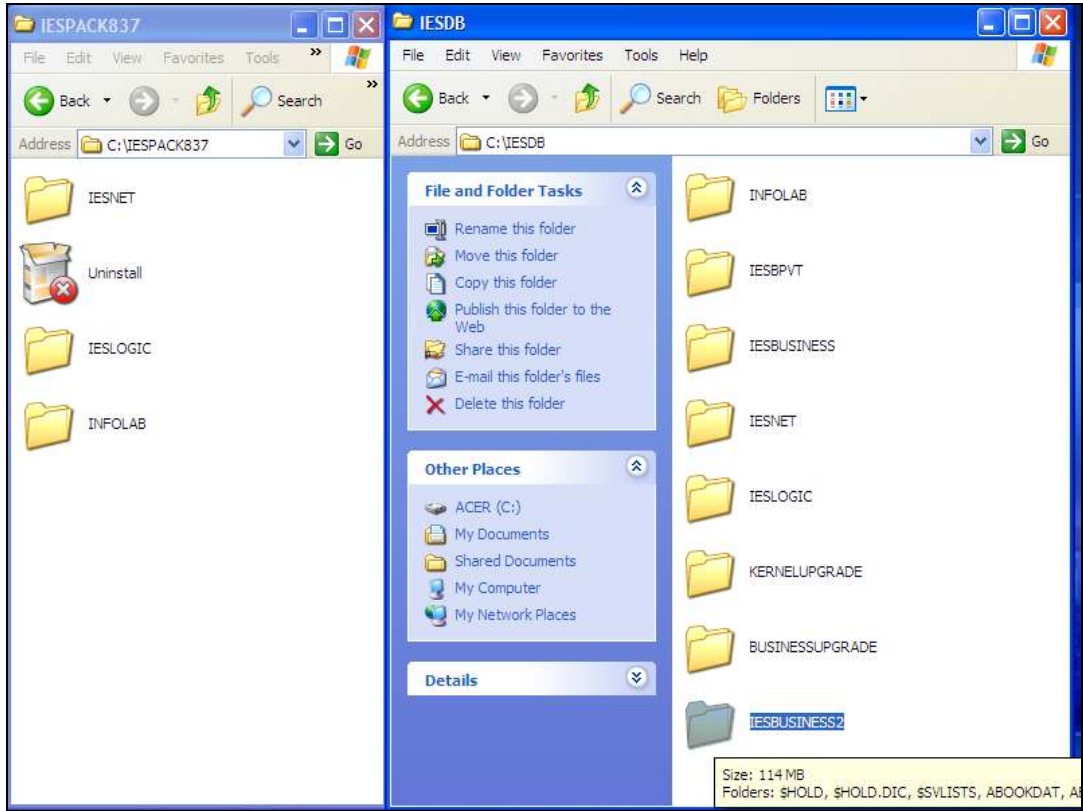
Slide 11

Slide notes: Once we have correctly renamed the Datamart, we just move it into the IESDB folder.



Slide 12

Slide notes:



Slide 13

Slide notes: And now the new Datamart is part of the database.