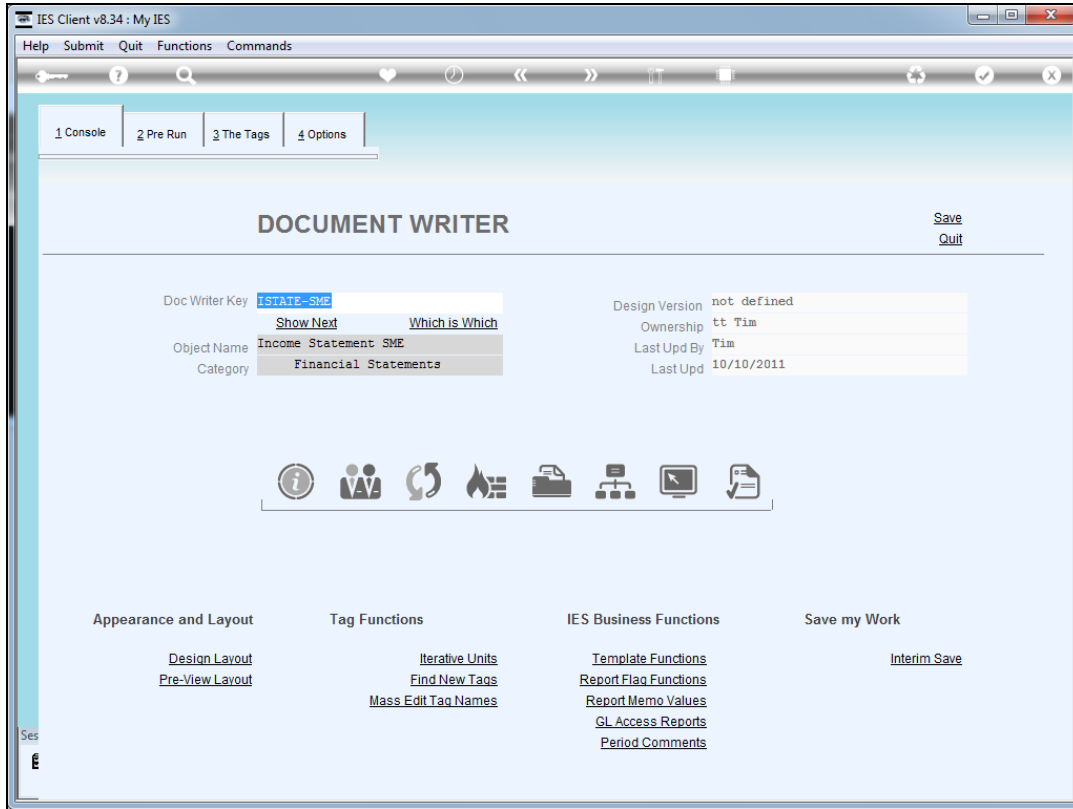
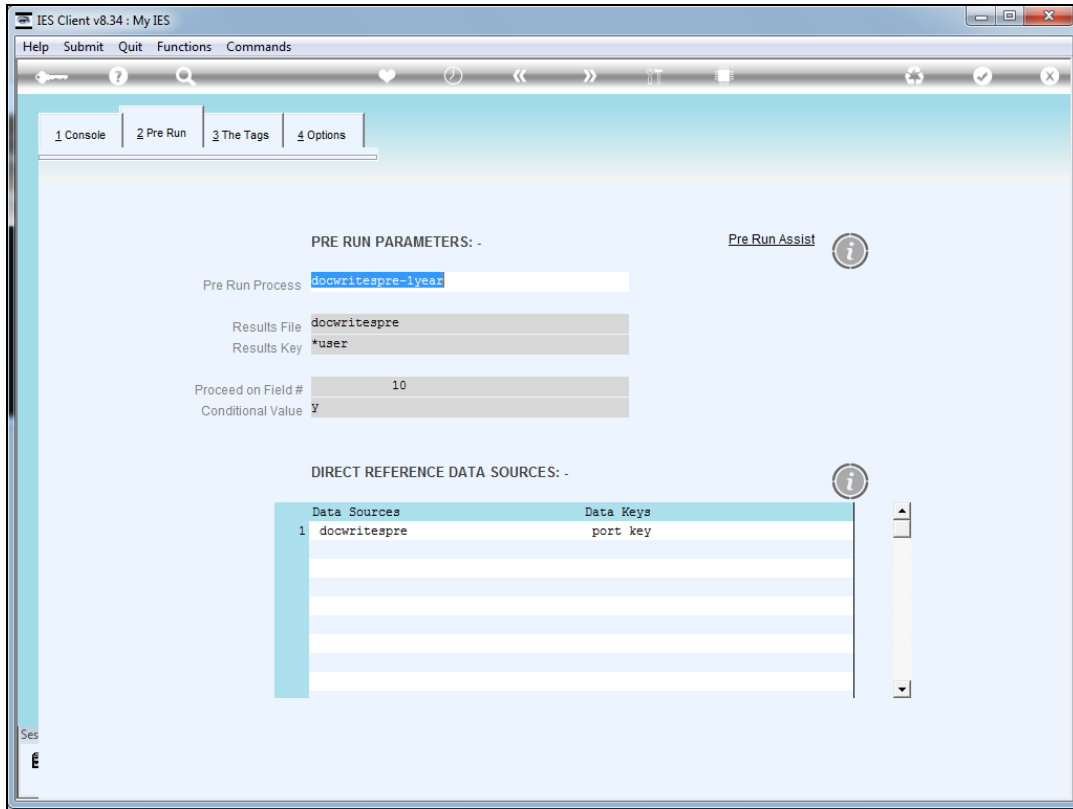


Slide 1

Slide notes: It is possible to re-use a Doc Writer page with iesMobile. Here we show an Income Statement Report with Doc Writer.

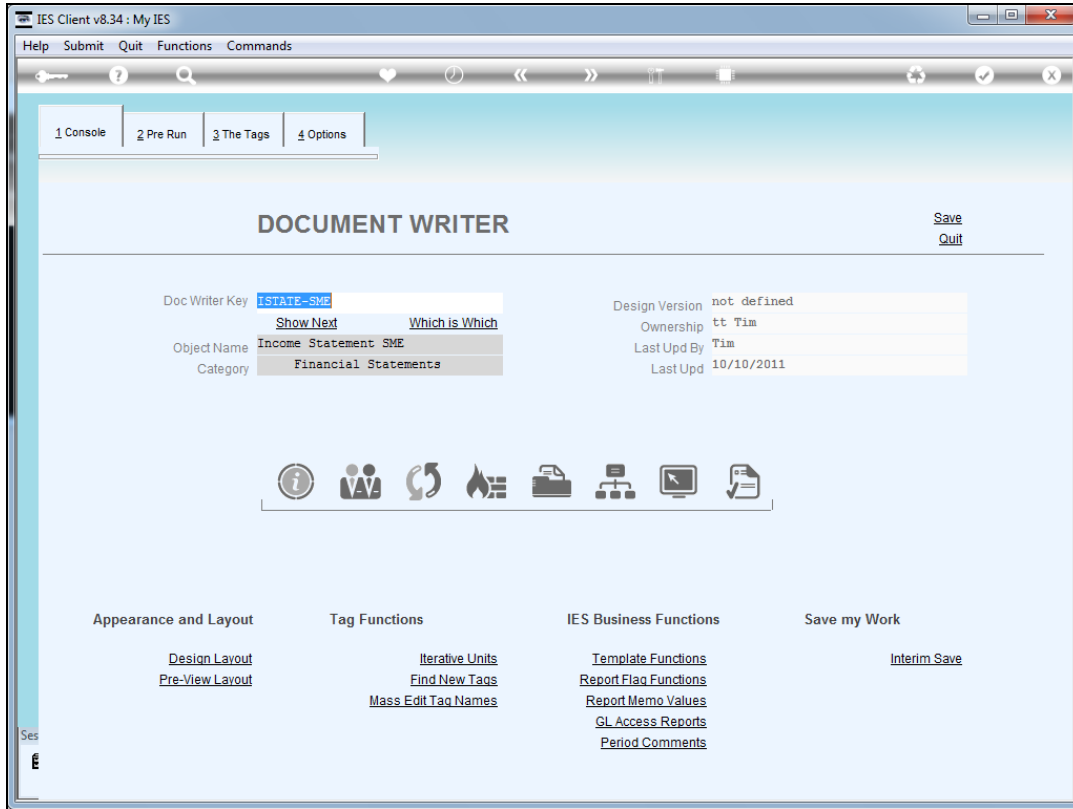


Slide 2
Slide notes:

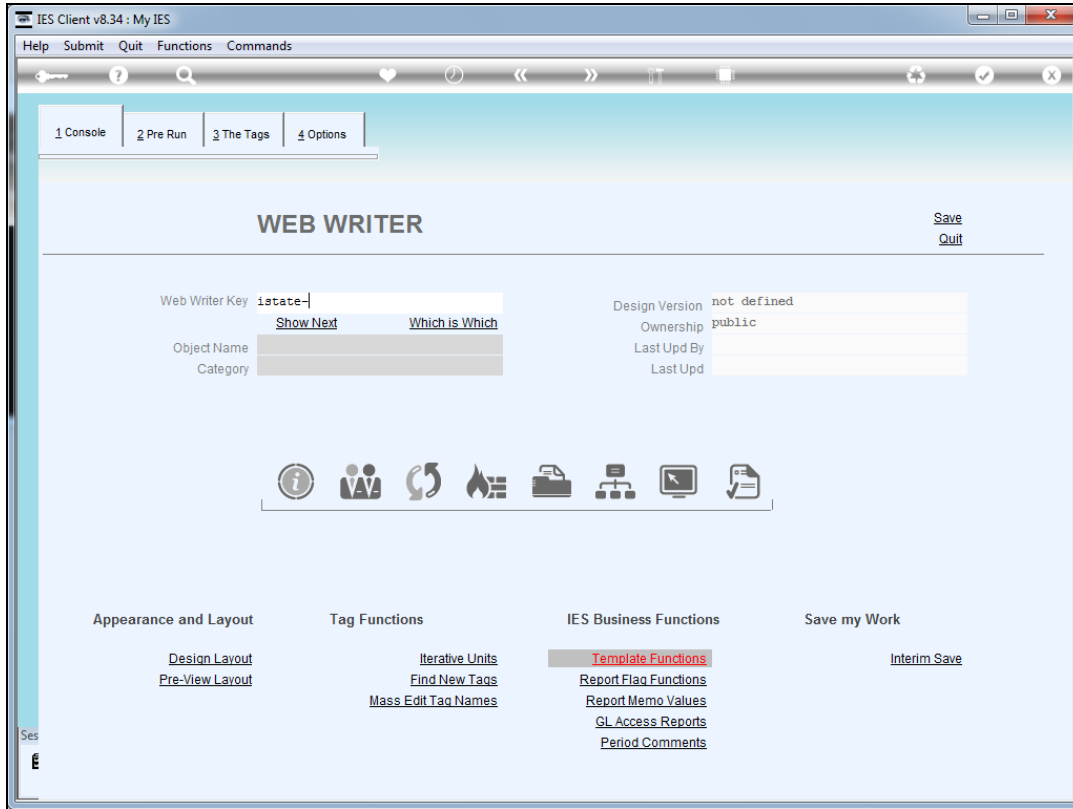


Slide 3

Slide notes: We note that this object uses a pre run, which we cannot do with Web Writer.

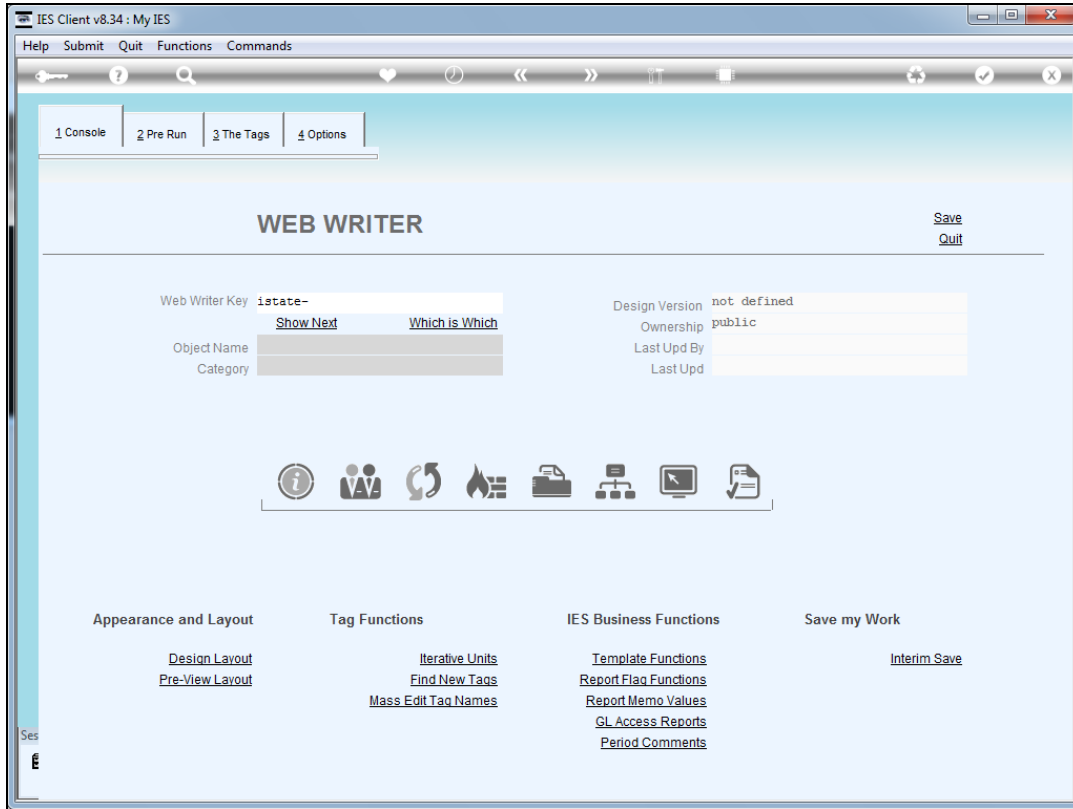


Slide 4
Slide notes:

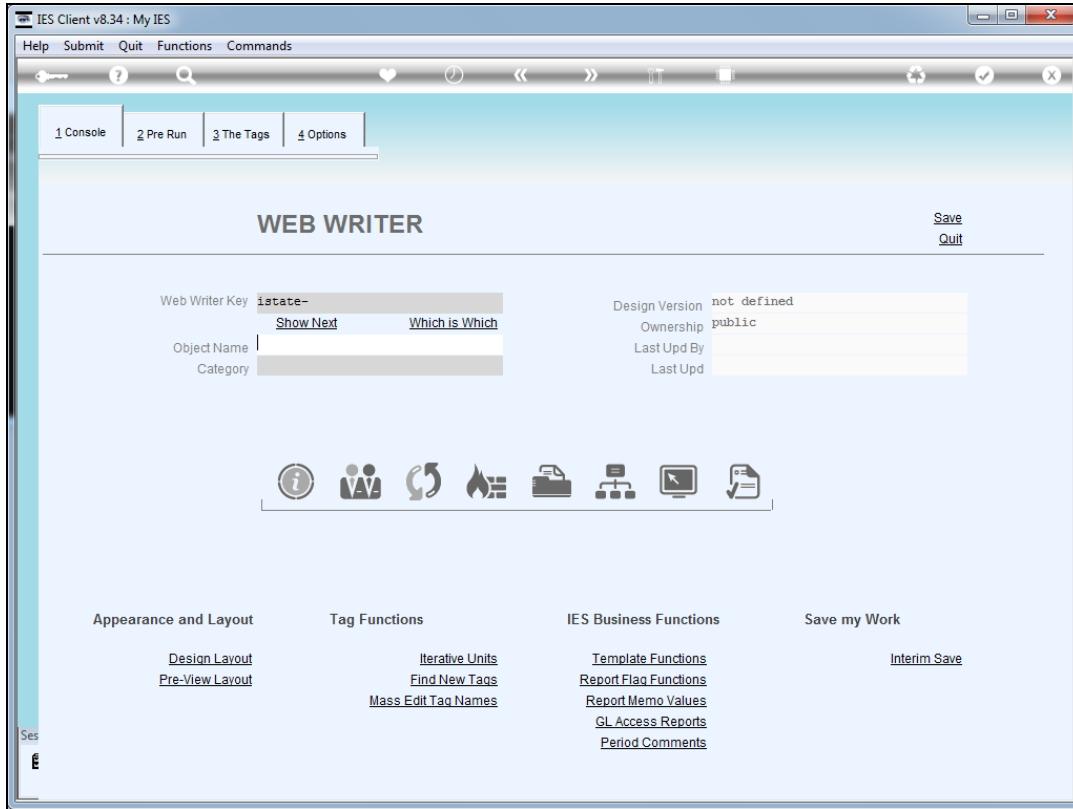


Slide 5

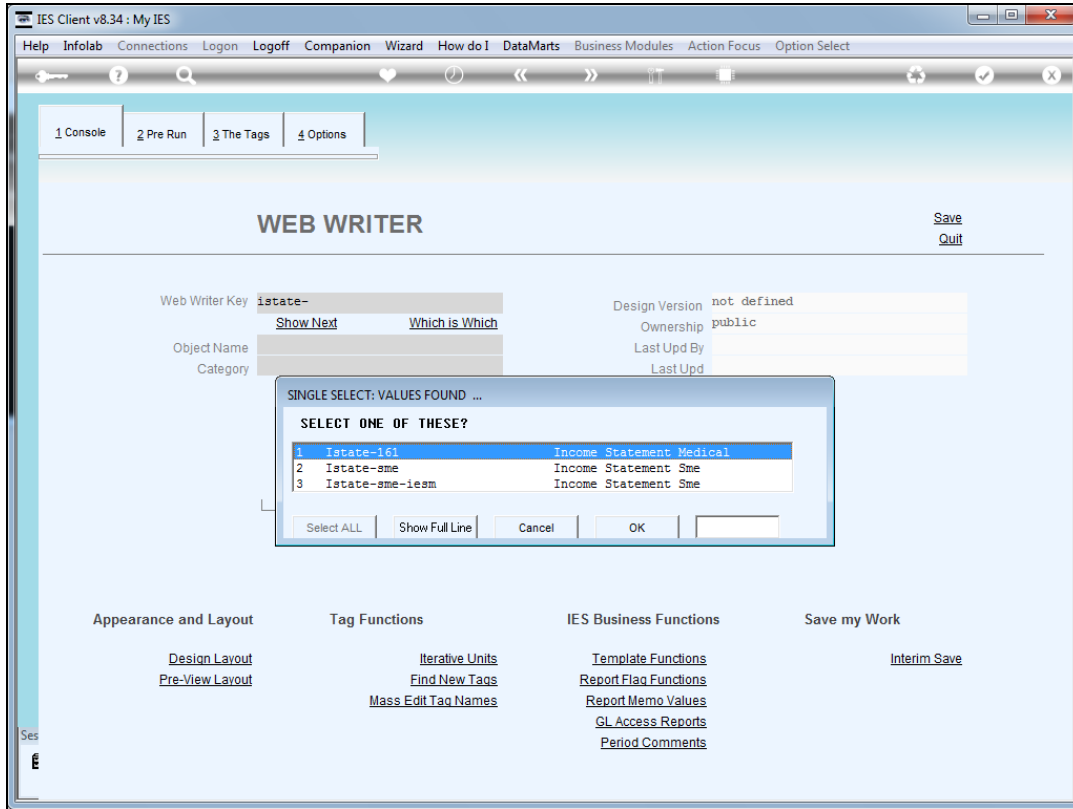
Slide notes: Now, with Web Writer it is allowed to access the same object that we just used before in Doc Writer.



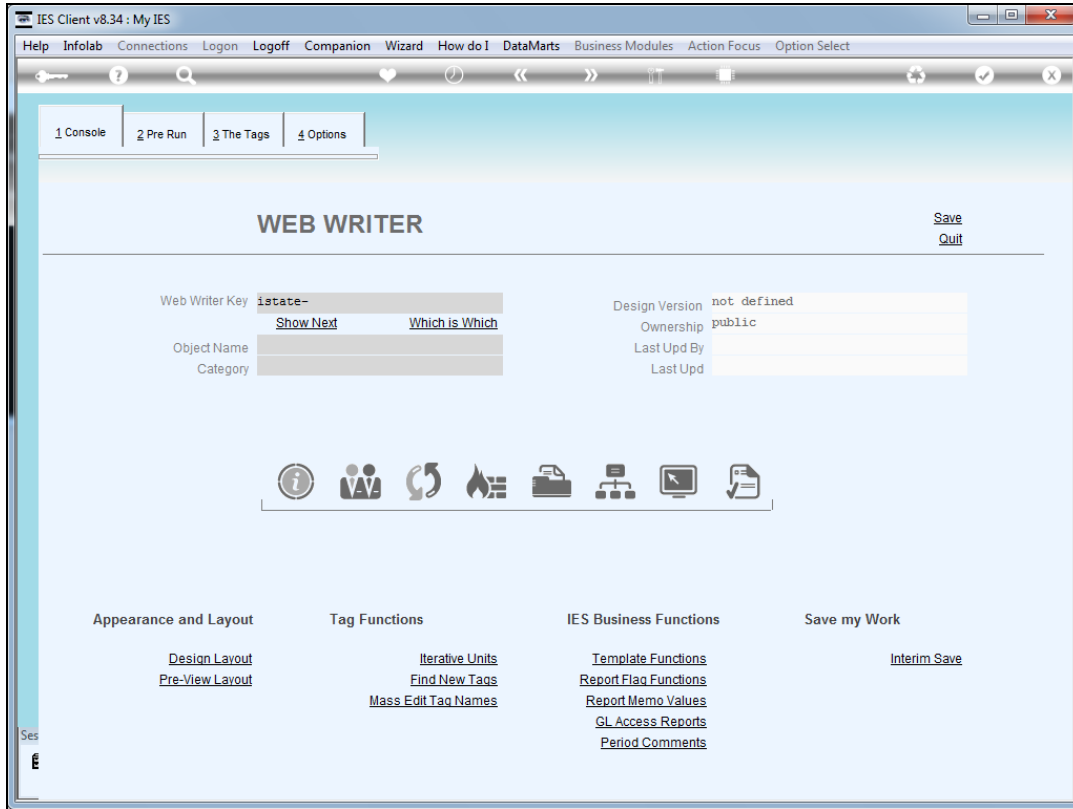
Slide 6
Slide notes:



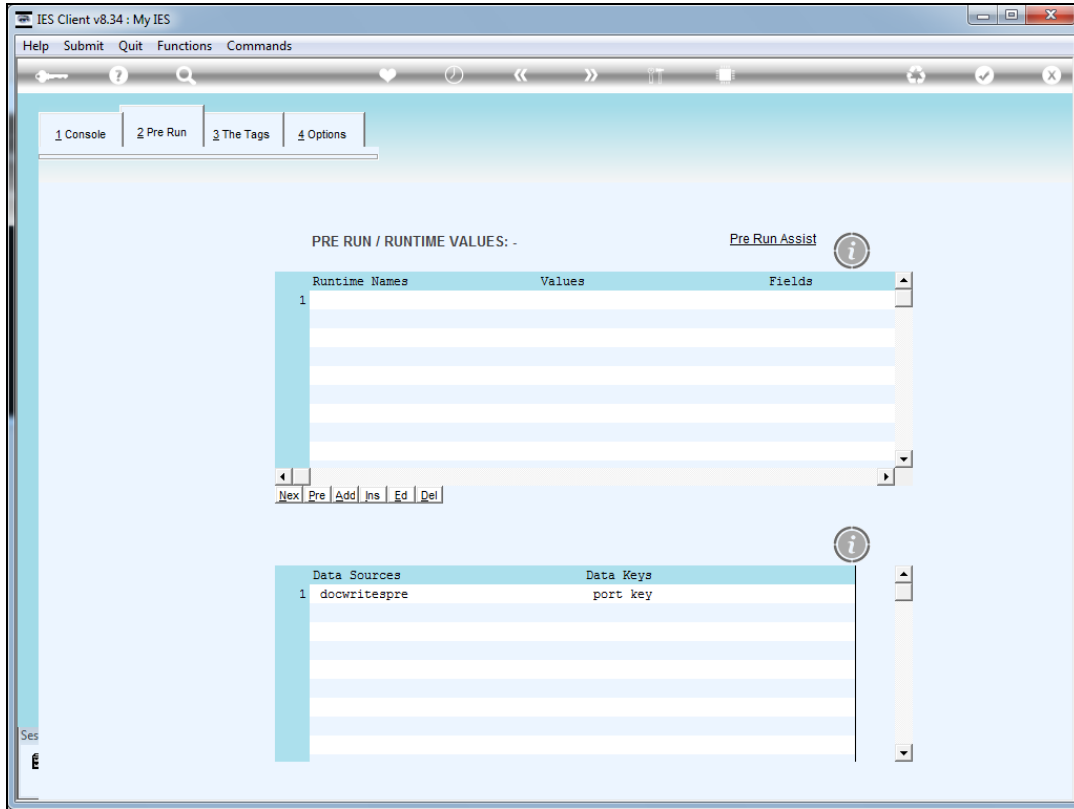
Slide 7
Slide notes:



Slide 8
Slide notes:

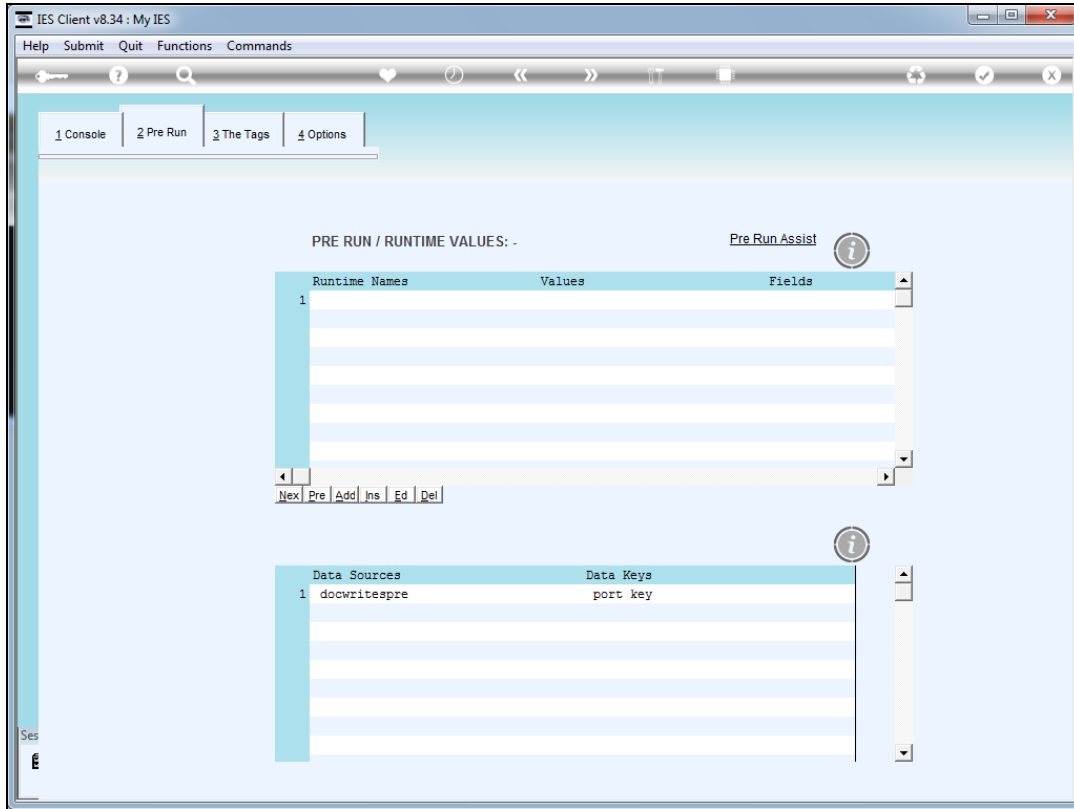


Slide 9
Slide notes:



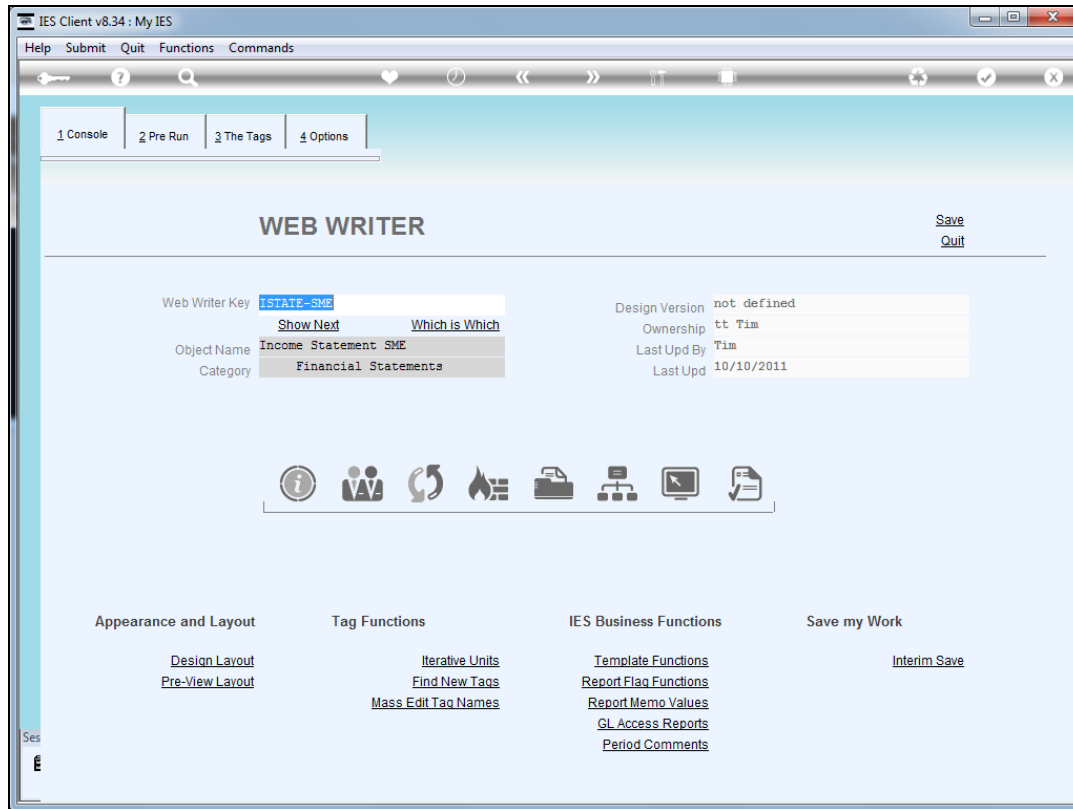
Slide 10

Slide notes: Yet, as we can see, we will have to define the pre-run runtime values, because Web Writer uses a different method to derive the runtime values.



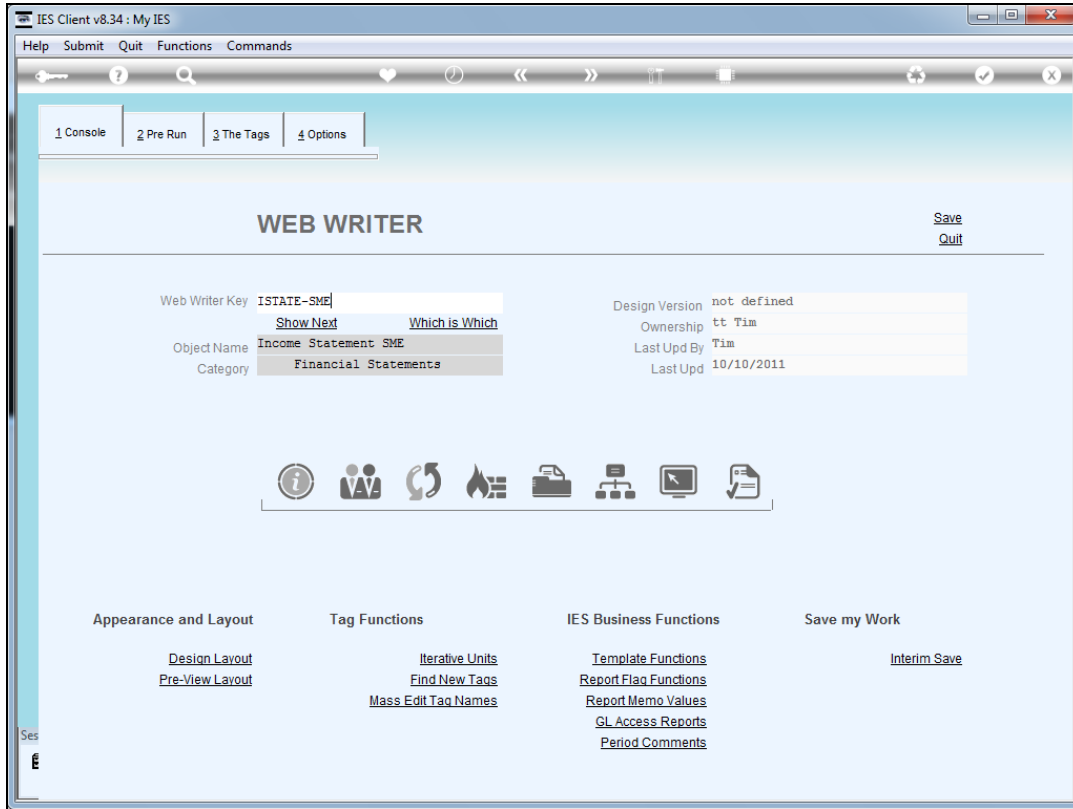
Slide 11

Slide notes: Still, it is allowed if we want to use the exact same layout as for Doc Writer.

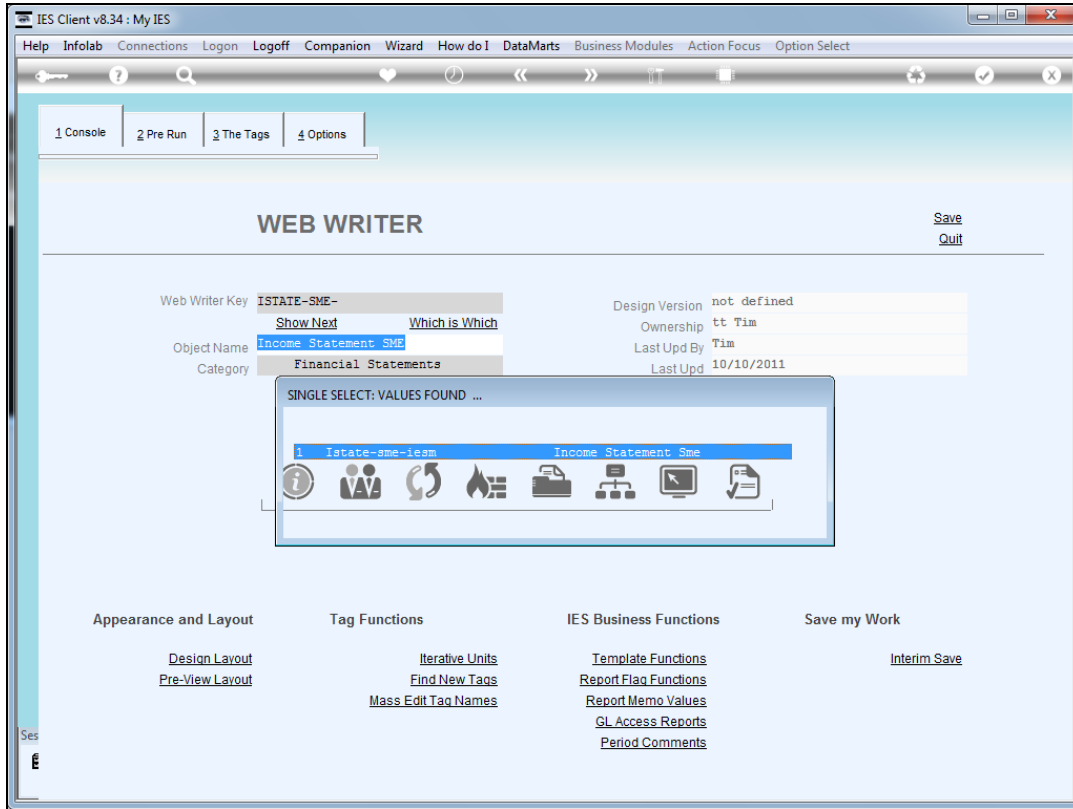


Slide 12

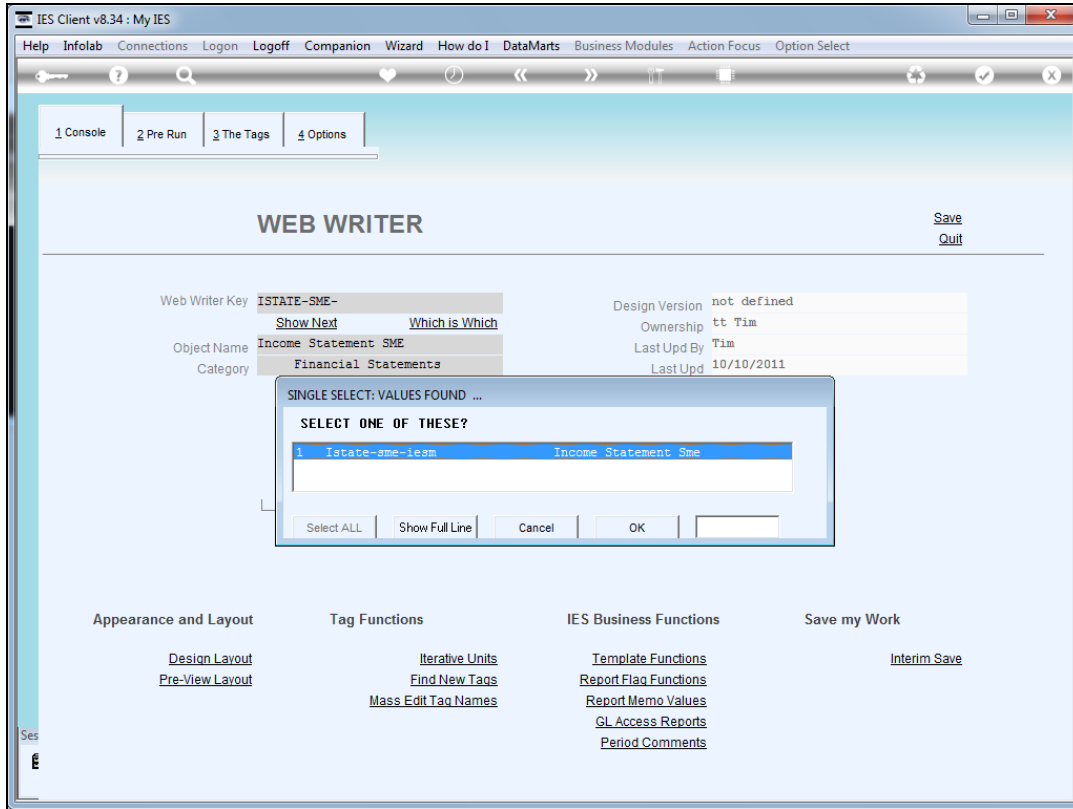
Slide notes: The recommended option though, is to copy the Doc Writer object, and modify and use the new version with Web Writer.



Slide 13
Slide notes:

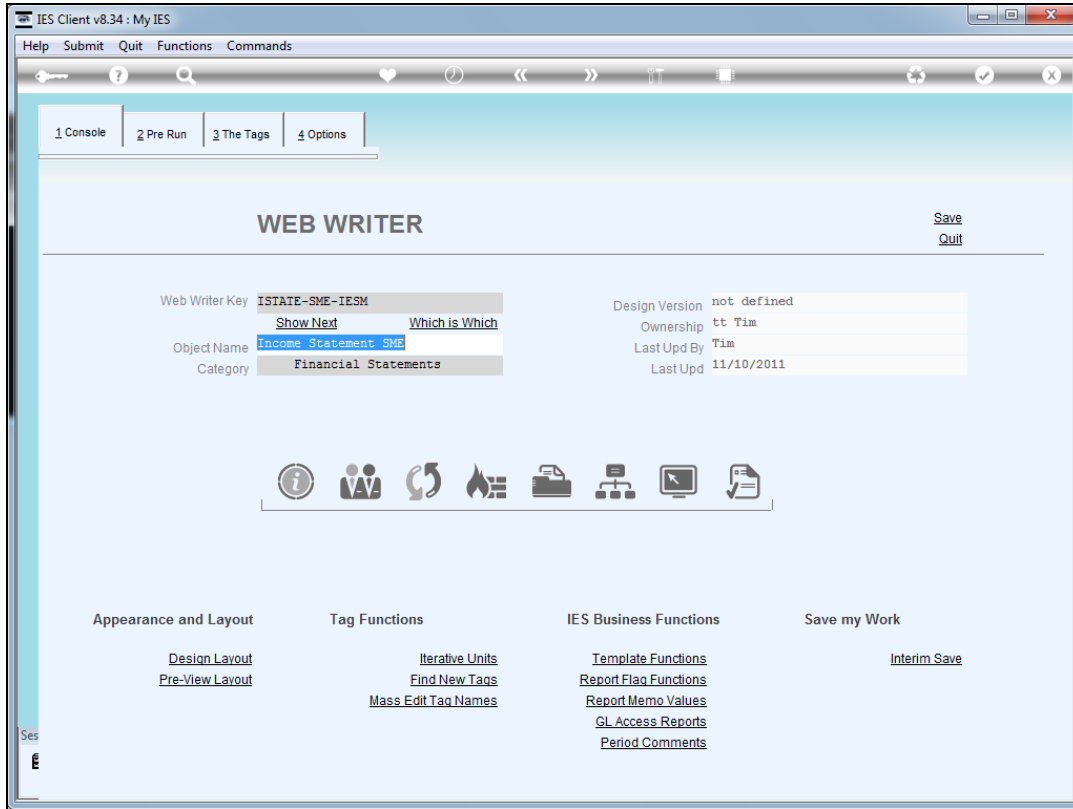


Slide 14
Slide notes:

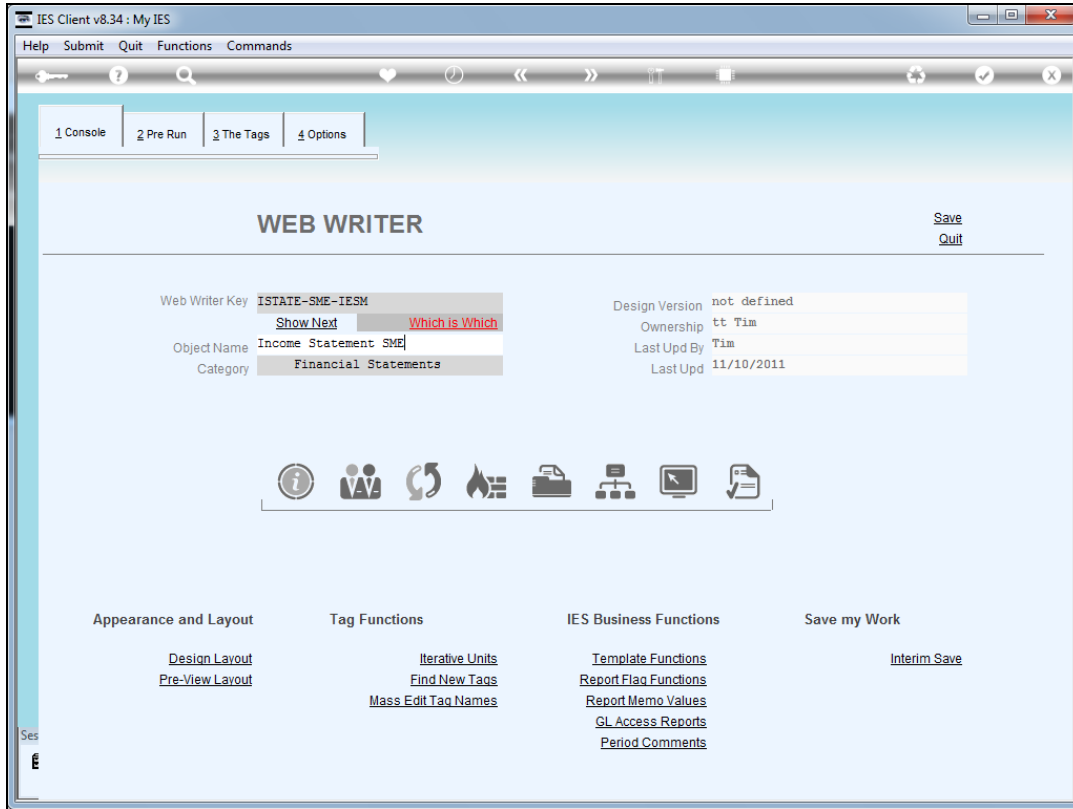


Slide 15

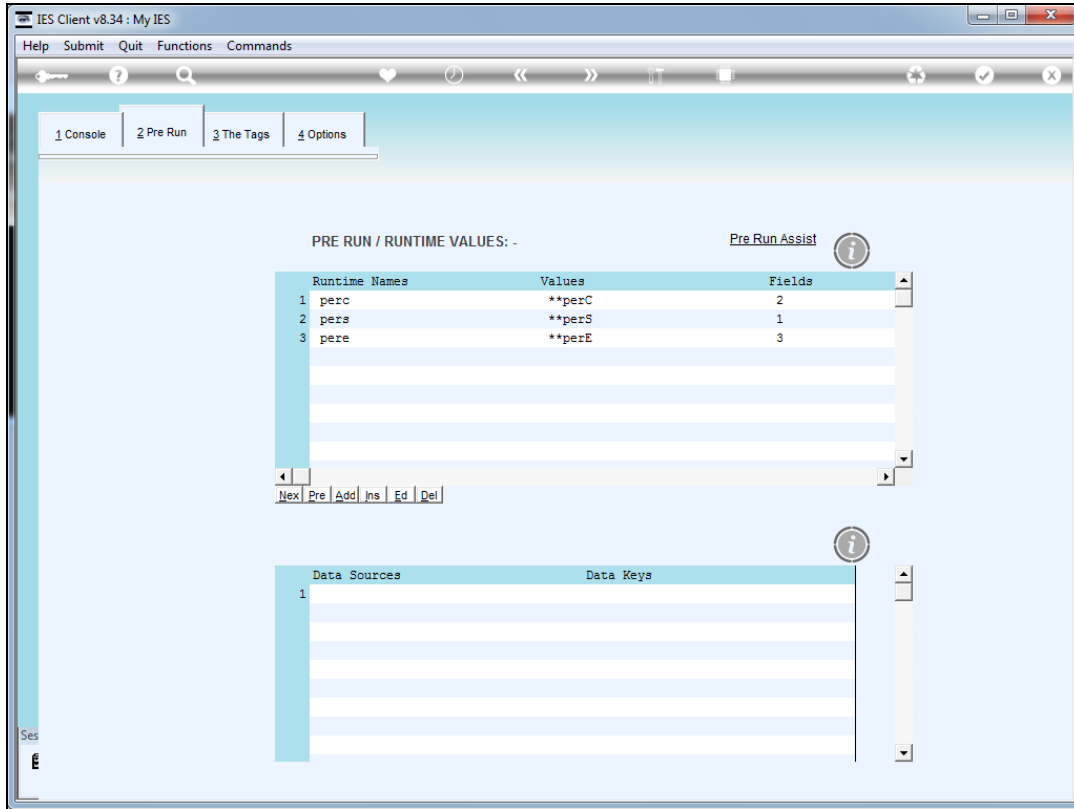
Slide notes: This item is a replica of the Doc Writer item that we looked at before, and we use this version with Web Writer, for iesMobile.



Slide 16
Slide notes:

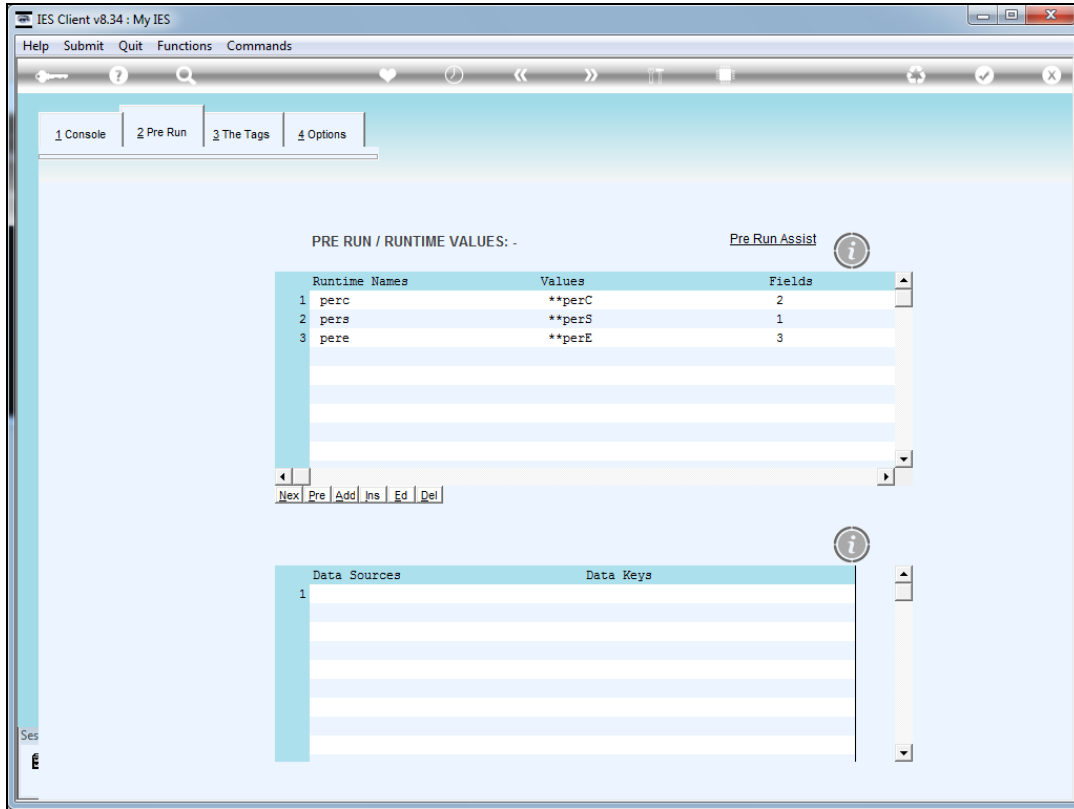


Slide 17
Slide notes:

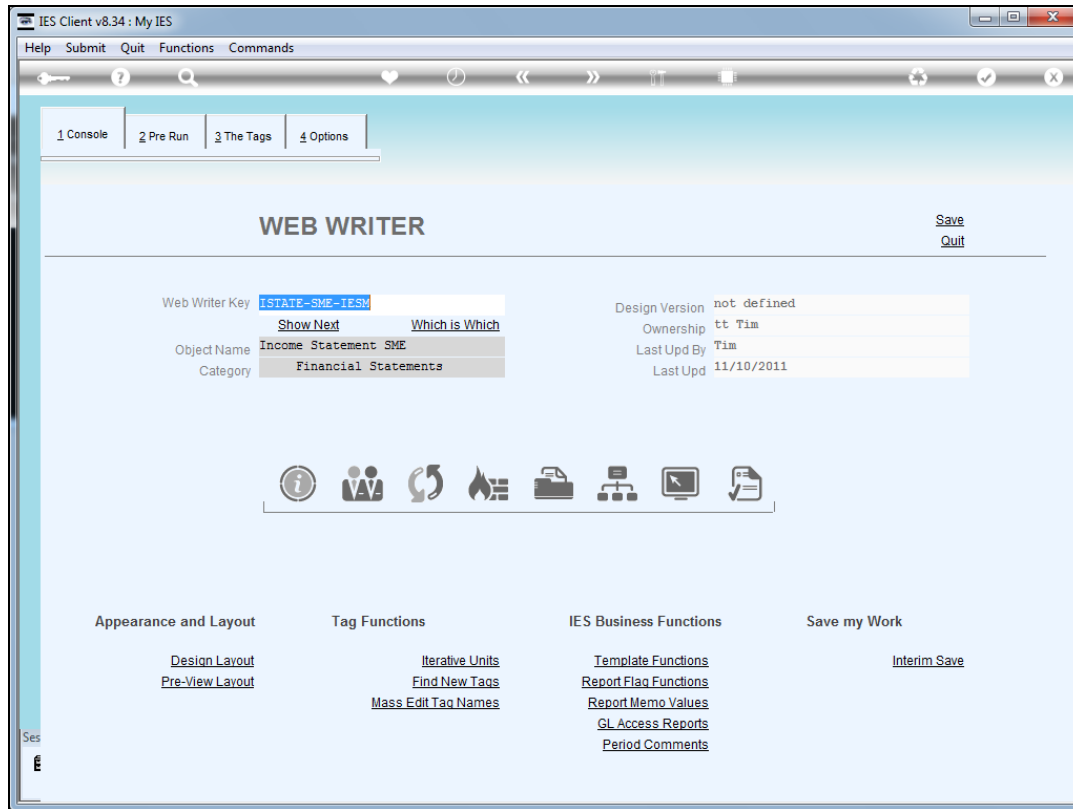


Slide 18

Slide notes: The Runtime Values are specified for Web Writer mode.



Slide 19
Slide notes:



Slide 20

Slide notes: The Web Writer version of a Page usually contains some other or additional objects in the layout, and therefore it is better to copy from Doc Writer and use a separate object with Web Writer. We note though that it is allowed to use the same object for both Doc Writer and Web Writer.